

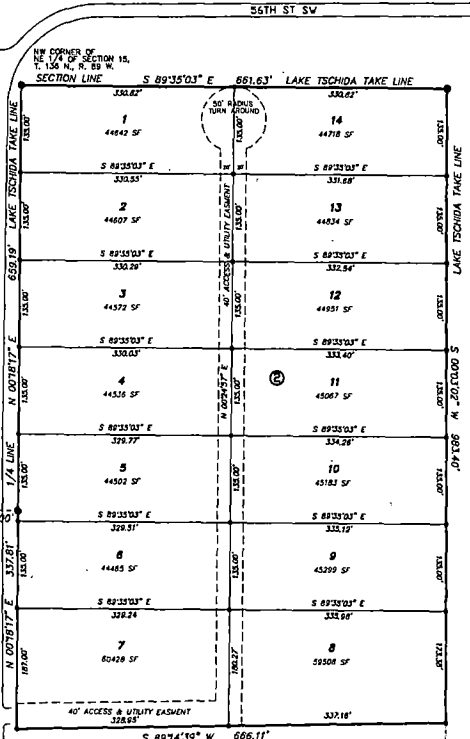
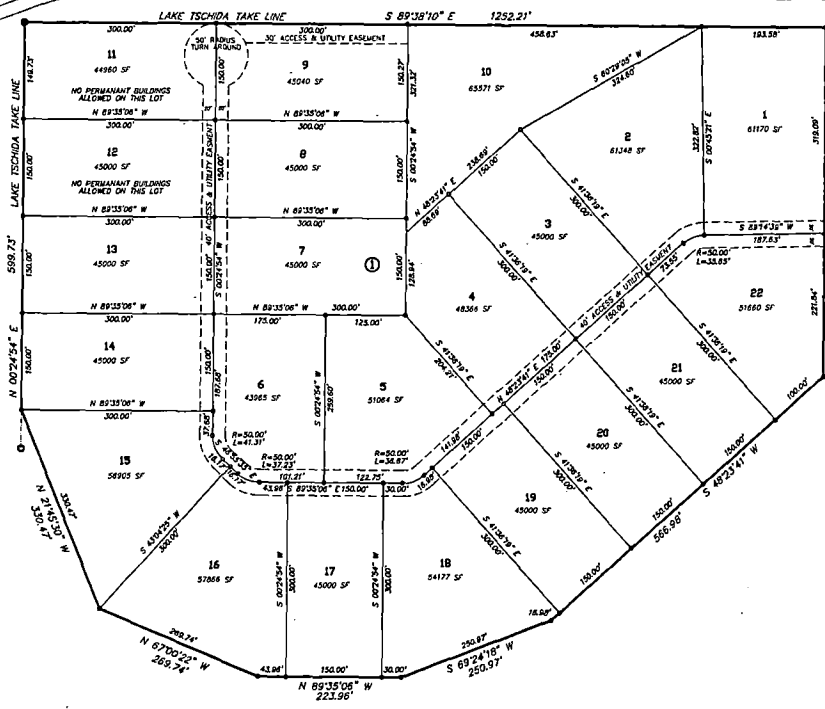
# SCHATZ SUBDIVISION

## PART OF THE NORTHEAST 1/4 & PART OF THE NORTHWEST 1/4 OF SECTION 15, T. 136 N., R. 89 W. GRANT COUNTY, NORTH DAKOTA

**SURVEY NOTE:**  
NORTH DAKOTA STATE PLANE SOUTH ZONE GRID DISTANCES AND BEARINGS GRID DISTANCE TO GROUND DISTANCE FACTOR 1.00015

**LEGEND:**

○ FOUND BRASS CAP MONUMENT



NOVEMBER 11, 2010  
SCALE: 1"=100'

36 LOTS  
40.16 ACRES

**DESCRIPTION NORTHEAST 1/4 SECTION 15 T 136 N R 89 W**

ALL THAT PART OF THE NORTHEAST 1/4 OF SECTION 15 TOWNSHIP 136 NORTH, RANGE 89 WEST OF THE 5TH PRINCIPAL MERIDIAN GRANT COUNTY, NORTH DAKOTA THAT LIES WITHIN THE FOLLOWING DESCRIBED TRACT: BEGINNING AT THE NORTHWEST CORNER OF THE NORTHEAST 1/4 OF SECTION 15; THENCE SOUTH 89 DEGREES 35 MINUTES 03 SECONDS EAST, ALONG THE NORTH LINE OF SAID SECTION 15 AND THE LAKE TSCHODA TAKE LINE, A DISTANCE OF 881.63 FEET; THENCE SOUTH 02 DEGREES 02 SECONDS WEST, CONTINUING ALONG SAID TAKE LINE, A DISTANCE OF 683.40 FEET; THENCE SOUTH 89 DEGREES 14 MINUTES 39 SECONDS WEST, A DISTANCE OF 686.11 FEET TO THE WEST LINE OF THE NORTHEAST 1/4; THENCE NORTH 0 DEGREES 18 MINUTES 17 SECONDS EAST, ALONG SAID WEST LINE AND THE LAKE TSCHODA TAKE LINE, A DISTANCE OF 997.00 FEET TO THE POINT OF BEGINNING; THE ABOVE DESCRIBED TRACT CONTAINS 15.09 ACRES, MORE OR LESS

**DESCRIPTION NORTHWEST 1/4 SECTION 15 T 136 N R 89 W**

ALL THAT PART OF THE NORTHWEST 1/4 OF SECTION 15 TOWNSHIP 136 NORTH, RANGE 89 WEST OF THE 5TH PRINCIPAL MERIDIAN GRANT COUNTY, NORTH DAKOTA THAT LIES WITHIN THE FOLLOWING DESCRIBED TRACT: BEGINNING AT A POINT ON THE LAKE TSCHODA TAKE LINE THAT LIES SOUTH 0 DEGREES 18 MINUTES 17 SECONDS WEST A DISTANCE OF 659.19 FEET AND NORTH 89 DEGREES 38 MINUTES 10 SECONDS WEST A DISTANCE OF 66.00 FEET FROM THE NORTHWEST CORNER OF THE NORTHEAST 1/4 OF SECTION 15; THENCE FROM SAID POINT OF BEGINNING SOUTH 00 DEGREES 18 MINUTES 17 SECONDS WEST A DISTANCE OF 540.94 FEET; THENCE SOUTH 48 DEGREES 23 MINUTES 41 SECONDS WEST A DISTANCE OF 586.98 FEET; THENCE SOUTH 89 DEGREES 24 MINUTES 18 SECONDS WEST A DISTANCE OF 250.97 FEET; THENCE NORTH 89 DEGREES 35 MINUTES 03 SECONDS WEST A DISTANCE OF 223.96 FEET; THENCE NORTH 67 DEGREES 00 MINUTES 22 SECONDS WEST A DISTANCE OF 269.74 FEET; THENCE NORTH 21 DEGREES 45 MINUTES 30 SECONDS WEST A DISTANCE OF 330.47 FEET TO THE LAKE TSCHODA TAKE LINE; THENCE NORTH 00 DEGREES 24 MINUTES 54 SECONDS WEST, ALONG SAID LAKE TSCHODA TAKE LINE, A DISTANCE OF 599.73 FEET; THENCE SOUTH 89 DEGREES 38 MINUTES 10 SECONDS EAST, CONTINUING ALONG SAID LAKE TSCHODA TAKE LINE, A DISTANCE OF 1252.21 FEET TO THE POINT OF BEGINNING; THE ABOVE DESCRIBED TRACT CONTAINS 25.07 ACRES, MORE OR LESS.

**APPROVAL OF COUNTY ENGINEER**

I, Dwight B. Rie, COUNTY ENGINEER OF GRANT COUNTY, NORTH DAKOTA, HEREBY APPROVE "SCHATZ SUBDIVISION", GRANT COUNTY, NORTH DAKOTA AS SHOWN ON THE ANNEXED PLAT.

Dwight B. Rie  
COUNTY ENGINEER, GRANT COUNTY ND

**APPROVAL OF BOARD OF COUNTY COMMISSIONERS**

THE BOARD OF COUNTY COMMISSIONERS OF GRANT COUNTY, NORTH DAKOTA, HAS APPROVED THE SUBDIVISION OF LAND AS SHOWN ON THE ANNEXED PLAT, HAS ACCEPTED THE DEDICATION OF ALL STREETS SHOWN THEREON, HAS APPROVED THE GROUNDS AS SHOWN ON THE ANNEXED PLAT AS AN AMENDMENT TO THE MASTER PLAN OF GRANT COUNTY, NORTH DAKOTA, AND DOES HEREBY VACATE ANY PREVIOUS PLATTING WITHIN THE BOUNDARY OF THE ANNEXED PLAT.

THE FOREGOING ACTION OF THE BOARD OF COUNTY COMMISSIONERS OF GRANT COUNTY, NORTH DAKOTA, WAS TAKEN BY RESOLUTION APPROVED THE 15TH DAY OF NOVEMBER, 2010.

Keith B. Pope CHAIRMAN  
Kelly Bachmair COUNTY AUDITOR

**APPROVAL OF COUNTY PLANNING COMMISSION**

THE SUBDIVISION OF LAND AS SHOWN ON THE ANNEXED PLAT HAS BEEN APPROVED BY THE PLANNING COMMISSION OF GRANT COUNTY, ON THE 15TH DAY OF NOVEMBER, 2010 IN ACCORDANCE WITH THE LAWS OF THE STATE OF NORTH DAKOTA, ORDINANCES OF GRANT COUNTY AND REGULATIONS ADOPTED BY SAID PLANNING COMMISSION. IN WITNESS WHEREOF ARE SET THE HANDS AND SEALS OF THE CHAIRMAN AND SECRETARY OF THE PLANNING COMMISSION OF GRANT COUNTY.

Phannon E. Straub CHAIRMAN  
Kelly Bachmair SECRETARY



**SURVEYOR'S CERTIFICATE**

I, TERRY BALTZER, A REGISTERED LAND SURVEYOR IN THE STATE OF NORTH DAKOTA, HEREBY CERTIFY THAT THE ANNEXED PLAT IS A TRUE COPY OF THE NOTES OF A SURVEY PERFORMED UNDER MY SUPERVISION AND COMPLETED ON SEPTEMBER 16, 2010 AND THAT ALL INFORMATION SHOWN HEREON IS TRUE AND CORRECT TO THE BEST OF MY KNOWLEDGE AND BELIEF, THAT ALL MONUMENTS SHOWN HEREON ARE CORRECT, THAT ALL REQUIRED MONUMENTS HAVE BEEN SET, AND THAT ALL DIMENSIONAL AND GEODETIC DETAILS ARE CORRECT.

STATE OF NORTH DAKOTA) SWENSON, HAGEN & CO. P.C.  
) SS 909 BASIN AVENUE  
COUNTY OF BURLEIGH) BISMARCK, NORTH DAKOTA 58504  
TERRY BALTZER  
REGISTERED LAND SURVEYOR  
N.D. REGISTRATION NO. 3595

ON THIS 11th DAY OF NOVEMBER, 2010, BEFORE ME PERSONALLY APPEARED TERRY BALTZER, KNOWN TO ME TO BE THE PERSON DESCRIBED IN AND WHO EXECUTED THE FOREGOING SURVEYOR'S CERTIFICATE AND HE ACKNOWLEDGED TO ME THAT HE EXECUTED THE SAME.

DAVID PATIENCE  
Notary Public  
State of North Dakota  
My Commission Expires August 24, 2018

DAVID PATIENCE, NOTARY PUBLIC  
BURLEIGH COUNTY, NORTH DAKOTA  
MY COMMISSION EXPIRES AUGUST 24, 2018

**OWNERS' CERTIFICATE & DEDICATIONS**

KNOW ALL MEN BY THESE PRESENTS THAT HENRY SCHATZ AND BEVERLY SCHATZ, BEING THE OWNERS AND PROPRIETORS OF THE PROPERTY SHOWN HEREON HAVE CAUSED THAT PORTION DESCRIBED HEREON TO BE SURVEYED AND PLATTED AS "SCHATZ SUBDIVISION", GRANT COUNTY, NORTH DAKOTA, AND DO SO DEDICATE STREETS AS SHOWN HEREON INCLUDING ALL SEWER, WATER, UTILITIES, AND OTHER PUBLIC UTILITIES WHETHER SHOWN HEREON OR NOT TO THE PUBLIC USE.

THEY ALSO DEDICATE EASEMENTS TO RUN WITH THE LAND, FOR GAS, ELECTRIC, TELEPHONE OR OTHER PUBLIC UTILITIES OR SERVICES INCLUDING SANITARY SEWER AND WATER MAINS ON OR UNDER THOSE CERTAIN STRIPS OF LAND DESIGNATED HEREON AS "UTILITY EASEMENTS".

THEY FURTHER GRANT THE ACCESS EASEMENT AS SHOWN ON THE PLAT TO ALL LAND OWNING PARTIES, FOR THE USE OF THE LAND OWNING PARTIES AND THEIR ASSIGNS, TENANTS, VISITORS, LICENSEES, AND INVITEES TO PASS AND REPASS ALONG SAID ACCESS EASEMENT AT ALL TIMES HEREFTER. THE OWNERS GRANT THIS ACCESS EASEMENT TO THE ABOVE DESCRIBED LAND OWNING PARTIES AND TO THEIR SUCCESSORS IN INTEREST. THEY ALSO DEDICATE THIS ACCESS EASEMENT TO AND FOR THE USE OF ANY GOVERNMENTAL SUBDIVISION, ITS OFFICERS AND EMPLOYEES FOR ANY GOVERNMENTAL USE OR USES IT DEEMS NECESSARY OR ADVISABLE, PROVIDED THE GOVERNMENTAL SUBDIVISION SHALL NOT BE RESPONSIBLE IN ANY WAY TO FURNISH ANY SERVICES IF SUCH ACCESS EASEMENT IS NOT PROPERLY MAINTAINED OR IS OBSTRUCTED.

STATE OF NORTH DAKOTA) Henry Schatz  
COUNTY OF BURLEIGH) BEVERLY SCHATZ, 4508 FROST LANE, BISMARCK, NORTH DAKOTA 58503  
Henry Schatz  
4508 FROST LANE, BISMARCK, NORTH DAKOTA 58503

ON THIS 11th DAY OF NOVEMBER, 2010, BEFORE ME PERSONALLY APPEARED HENRY SCHATZ AND BEVERLY SCHATZ KNOWN TO ME TO BE THE PERSONS WHO EXECUTED THE FOREGOING CERTIFICATE AND THEY ACKNOWLEDGED TO ME THAT THEY EXECUTED THE SAME.

DAVID PATIENCE  
Notary Public  
State of North Dakota  
My Commission Expires August 24, 2018

DAVID PATIENCE, NOTARY PUBLIC  
BURLEIGH COUNTY, NORTH DAKOTA  
MY COMMISSION EXPIRES AUGUST 24, 2018

DOC # 134880 GRANT COUNTY, ND TOTAL PAGES: 1  
FILED: 4/21/2011 11:48 AM FEE: \$13.50  
RECORDER: Janet Strain  
DEPUTY

