



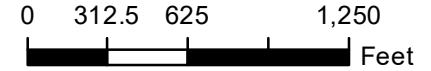
# Farm 8687

**S27 T142N R55W**

Phy Cnty: Cass

**2024 Program Year**

Map Created April 19, 2024



- Unless Otherwise Noted:**
- Barley = Spring for Grain
  - Canola = Spring for Processing
  - Corn = Yellow for Grain
  - Flax = Common for Grain
  - Oats = Spring for Grain
  - Soybeans = Common for Grain
  - Sunflowers = Oil for Grain
  - Wheat = Spring for Grain
  - All fields are non-irrigated
  - Shares are 100% to operator

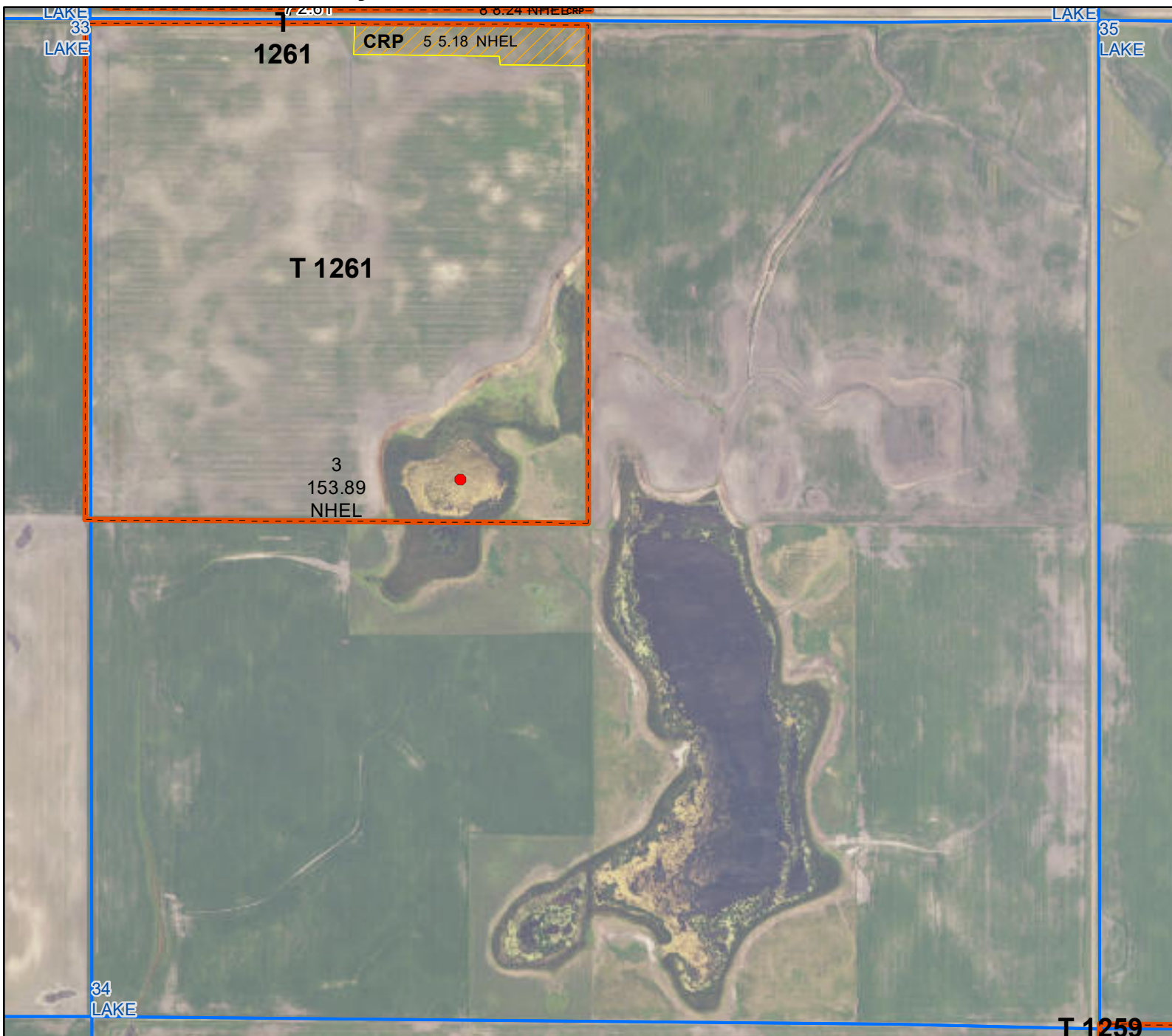
## Common Land Unit

- Tract Boundary
- Non-Cropland
- Cropland
- CRP
- PLSS

## Wetland Determination Identifiers

- Restricted Use
- Limited Restrictions
- Exempt from Conservation Compliance Provisions

United States Department of Agriculture (USDA) Farm Service Agency (FSA) maps are for FSA Program administration only. This map does not represent a legal survey or reflect actual ownership; rather it depicts the information provided directly from the producer and/or National Agricultural Imagery Program (NAIP) imagery. The producer accepts the data 'as is' and assumes all risks associated with its use. USDA-FSA assumes no responsibility for actual or consequential damage incurred as a result of any user's reliance on this data outside FSA Programs. Wetland identifiers do not represent the size, shape, or specific determination of the area. Refer to your original determination (CPA-026 and attached maps) for exact boundaries and determinations or contact USDA Natural Resources Conservation Service (NRCS). **The imagery displayed on this map was collected in calendar year 2023.**



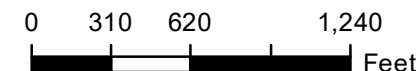
## Farm 8687

**S34 T142N R55W**

Phy Cnty: Cass

**2024 Program Year**

Map Created April 19, 2024



### Unless Otherwise Noted:

- Barley = Spring for Grain
- Canola = Spring for Processing
- Corn = Yellow for Grain
- Flax = Common for Grain
- Oats = Spring for Grain
- Soybeans = Common for Grain
- Sunflowers = Oil for Grain
- Wheat = Spring for Grain
- All fields are non-irrigated
- Shares are 100% to operator

### Common Land Unit

- Tract Boundary
- Non-Cropland
- Cropland
- CRP
- PLSS

### Wetland Determination Identifiers

- Restricted Use
- Limited Restrictions
- Exempt from Conservation Compliance Provisions



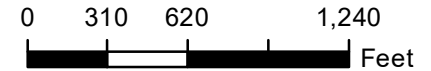
# Farm 8687

**S36 T142N R55W**

Phy Cnty: Cass

**2024 Program Year**

Map Created April 19, 2024



- Unless Otherwise Noted:**
- Barley = Spring for Grain
  - Canola = Spring for Processing
  - Corn = Yellow for Grain
  - Flax = Common for Grain
  - Oats = Spring for Grain
  - Soybeans = Common for Grain
  - Sunflowers = Oil for Grain
  - Wheat = Spring for Grain
  - All fields are non-irrigated
  - Shares are 100% to operator

## Common Land Unit

- Tract Boundary
- Non-Cropland
- Cropland
- PLSS

## Wetland Determination Identifiers

- Restricted Use
- ▼ Limited Restrictions
- Exempt from Conservation Compliance Provisions

United States Department of Agriculture (USDA) Farm Service Agency (FSA) maps are for FSA Program administration only. This map does not represent a legal survey or reflect actual ownership; rather it depicts the information provided directly from the producer and/or National Agricultural Imagery Program (NAIP) imagery. The producer accepts the data 'as is' and assumes all risks associated with its use. USDA-FSA assumes no responsibility for actual or consequential damage incurred as a result of any user's reliance on this data outside FSA Programs. Wetland identifiers do not represent the size, shape, or specific determination of the area. Refer to your original determination (CPA-026 and attached maps) for exact boundaries and determinations or contact USDA Natural Resources Conservation Service (NRCS). **The imagery displayed on this map was collected in calendar year 2023.**



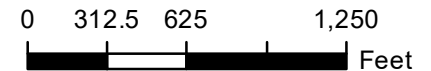
### Farm 8687

S3 T141N R55W

Phy Cnty: Cass

2024 Program Year

Map Created April 19, 2024



T  
1259

1  
308.58  
NHEL

CRP  
2  
15.3  
NHEL

1  
184.62  
NHEL

- Unless Otherwise Noted:**
- Barley = Spring for Grain
  - Canola = Spring for Processing
  - Corn = Yellow for Grain
  - Flax = Common for Grain
  - Oats = Spring for Grain
  - Soybeans = Common for Grain
  - Sunflowers = Oil for Grain
  - Wheat = Spring for Grain
  - All fields are non-irrigated
  - Shares are 100% to operator

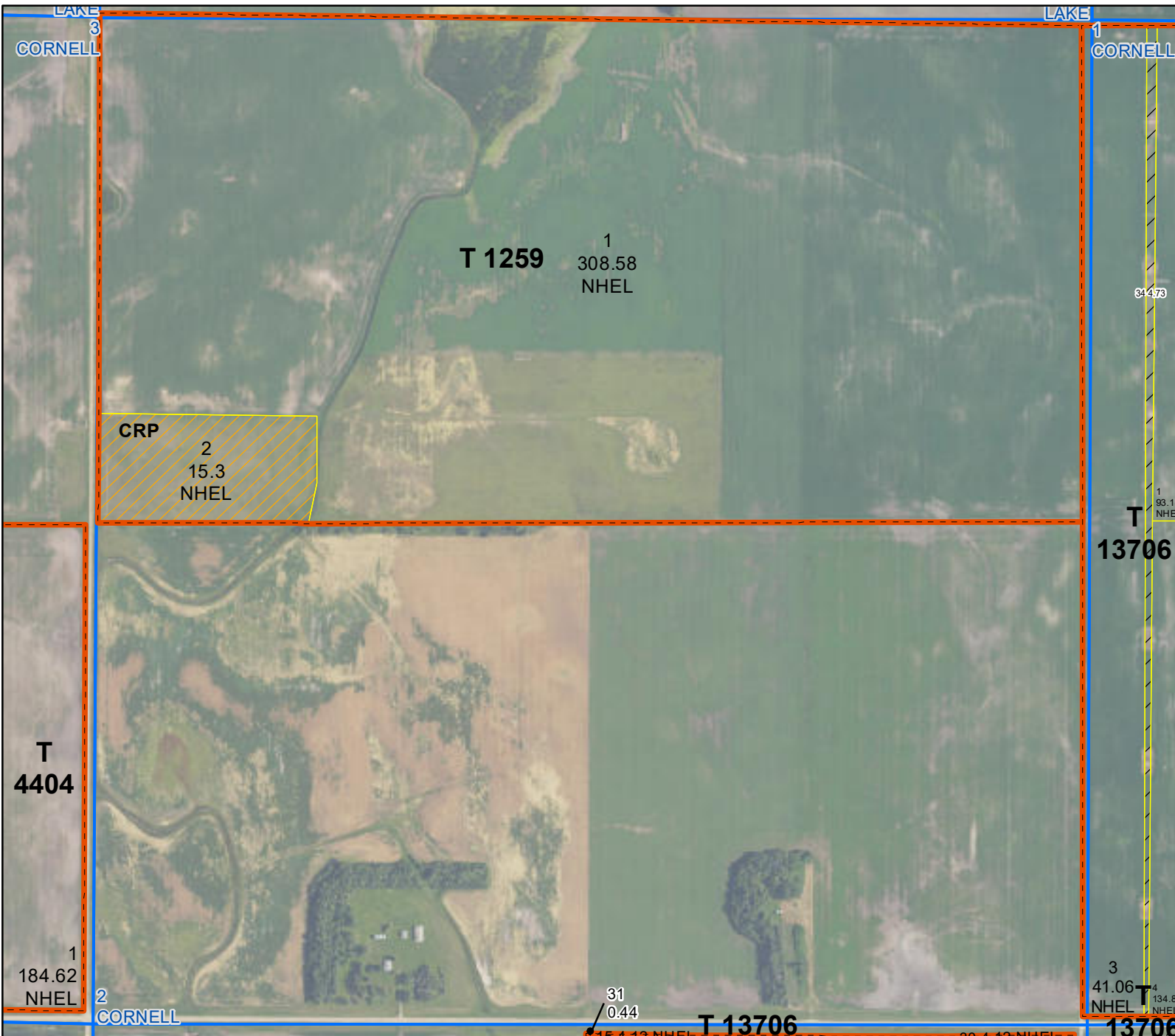
### Common Land Unit

- Tract Boundary
- Cropland
- CRP
- PLSS

### Wetland Determination Identifiers

- Restricted Use
- Limited Restrictions
- Exempt from Conservation Compliance Provisions

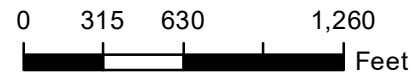
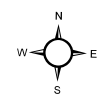
United States Department of Agriculture (USDA) Farm Service Agency (FSA) maps are for FSA Program administration only. This map does not represent a legal survey or reflect actual ownership; rather it depicts the information provided directly from the producer and/or National Agricultural Imagery Program (NAIP) imagery. The producer accepts the data 'as is' and assumes all risks associated with its use. USDA-FSA assumes no responsibility for actual or consequential damage incurred as a result of any user's reliance on this data outside FSA Programs. Wetland identifiers do not represent the size, shape, or specific determination of the area. Refer to your original determination (CPA-026 and attached maps) for exact boundaries and determinations or contact USDA Natural Resources Conservation Service (NRCS). **The imagery displayed on this map was collected in calendar year 2023.**



### Farm 8687

**S2 T141N R55W**  
Phy Cnty: Cass

**2024 Program Year**  
Map Created April 19, 2024



- Unless Otherwise Noted:**
- Barley = Spring for Grain
  - Canola = Spring for Processing
  - Corn = Yellow for Grain
  - Flax = Common for Grain
  - Oats = Spring for Grain
  - Soybeans = Common for Grain
  - Sunflowers = Oil for Grain
  - Wheat = Spring for Grain
  - All fields are non-irrigated
  - Shares are 100% to operator

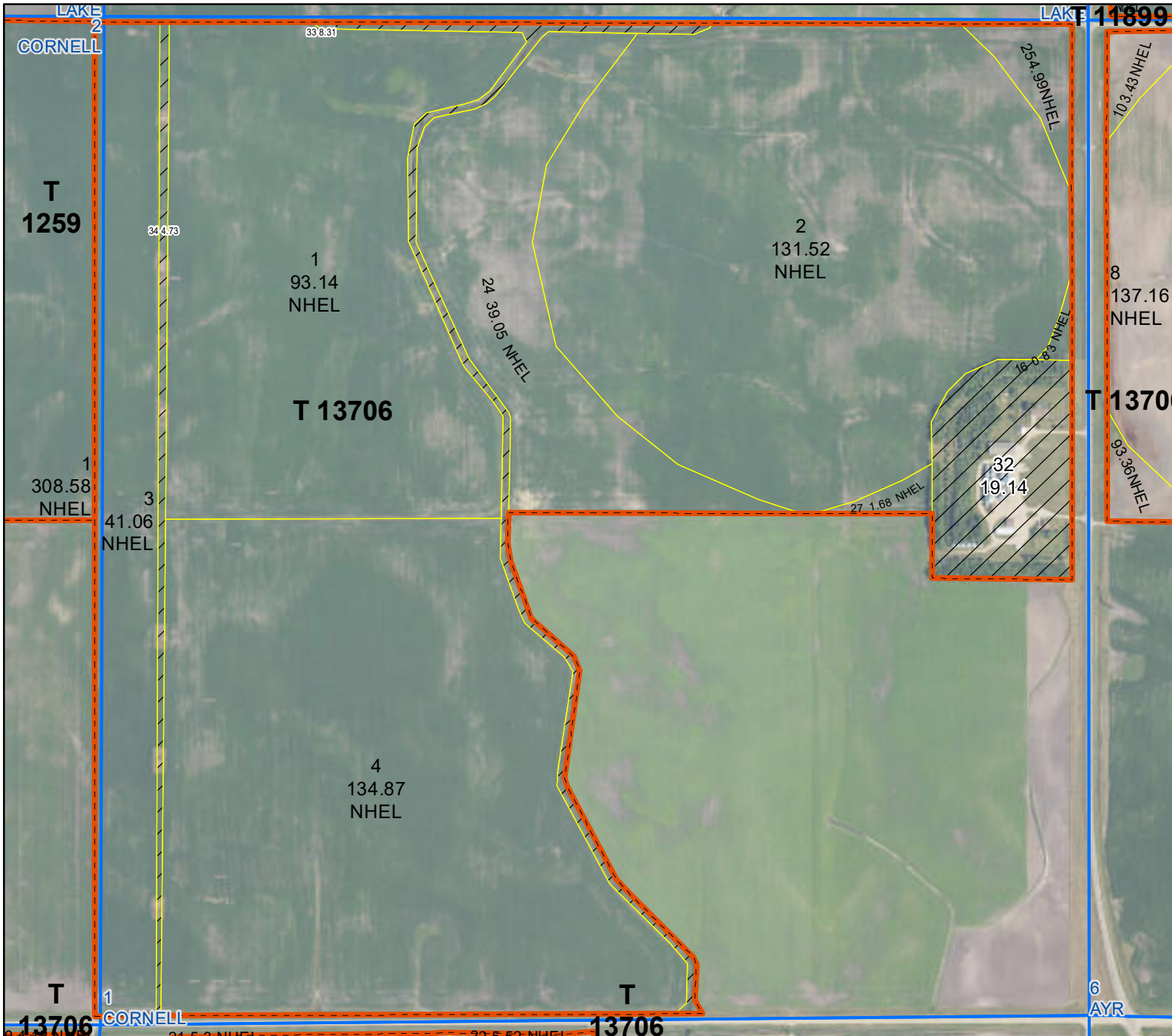
### Common Land Unit

- Tract Boundary
- Non-Cropland
- Cropland
- CRP
- PLSS

### Wetland Determination Identifiers

- Restricted Use
- ▼ Limited Restrictions
- Exempt from Conservation Compliance Provisions

United States Department of Agriculture (USDA) Farm Service Agency (FSA) maps are for FSA Program administration only. This map does not represent a legal survey or reflect actual ownership; rather it depicts the information provided directly from the producer and/or National Agricultural Imagery Program (NAIP) imagery. The producer accepts the data 'as is' and assumes all risks associated with its use. USDA-FSA assumes no responsibility for actual or consequential damage incurred as a result of any user's reliance on this data outside FSA Programs. Wetland identifiers do not represent the size, shape, or specific determination of the area. Refer to your original determination (CPA-026 and attached maps) for exact boundaries and determinations or contact USDA Natural Resources Conservation Service (NRCS). **The imagery displayed on this map was collected in calendar year 2023.**



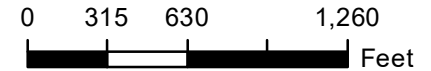
### Farm 8687

**S1 T141N R55W**

Phy Cnty: Cass

**2024 Program Year**

Map Created April 19, 2024



- Unless Otherwise Noted:**
- Barley = Spring for Grain
  - Canola = Spring for Processing
  - Corn = Yellow for Grain
  - Flax = Common for Grain
  - Oats = Spring for Grain
  - Soybeans = Common for Grain
  - Sunflowers = Oil for Grain
  - Wheat = Spring for Grain
  - All fields are non-irrigated
  - Shares are 100% to operator

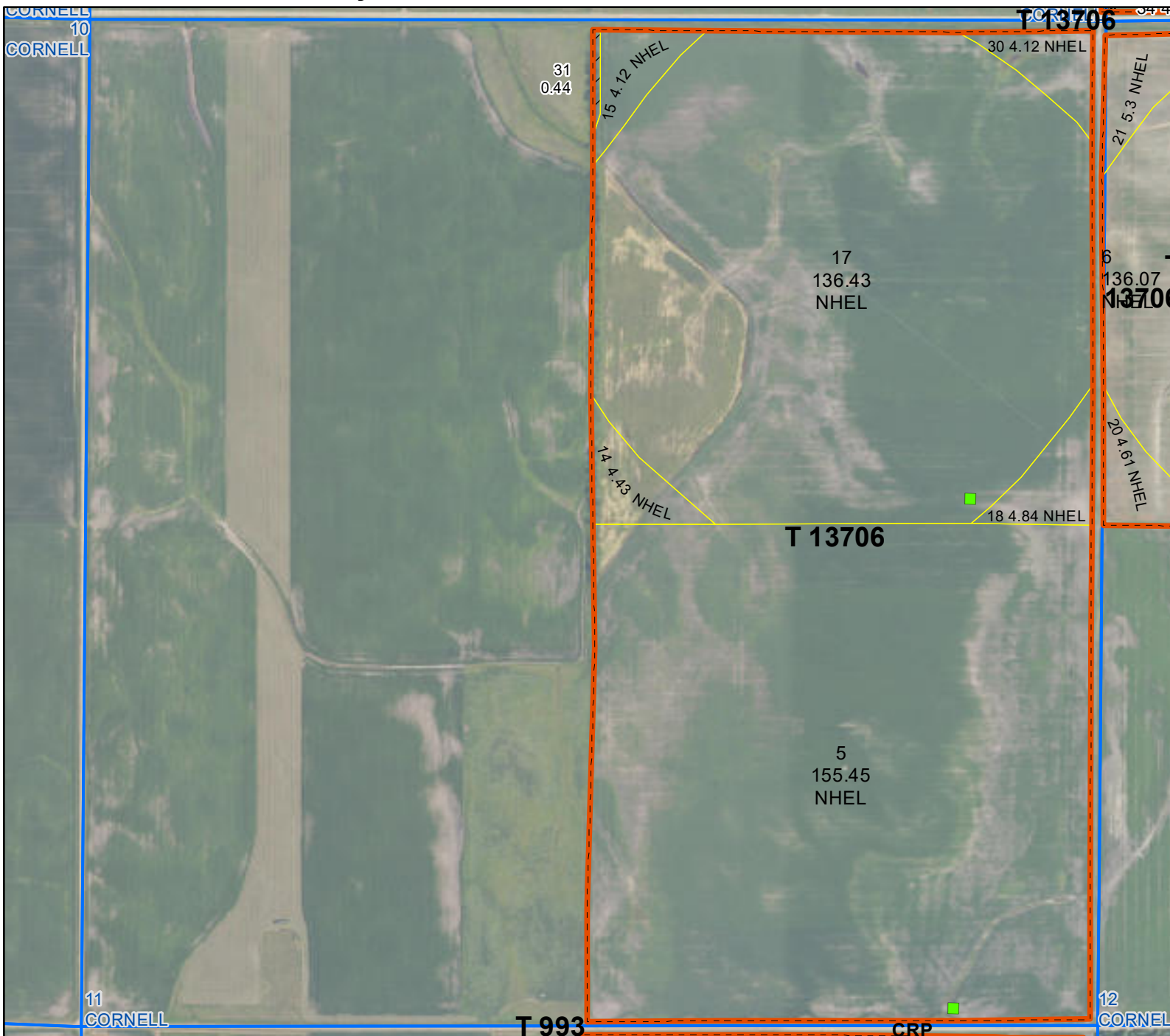
### Common Land Unit

- Tract Boundary
- Non-Cropland
- Cropland
- PLSS

### Wetland Determination Identifiers

- Restricted Use
- Limited Restrictions
- Exempt from Conservation Compliance Provisions

United States Department of Agriculture (USDA) Farm Service Agency (FSA) maps are for FSA Program administration only. This map does not represent a legal survey or reflect actual ownership; rather it depicts the information provided directly from the producer and/or National Agricultural Imagery Program (NAIP) imagery. The producer accepts the data 'as is' and assumes all risks associated with its use. USDA-FSA assumes no responsibility for actual or consequential damage incurred as a result of any user's reliance on this data outside FSA Programs. Wetland identifiers do not represent the size, shape, or specific determination of the area. Refer to your original determination (CPA-026 and attached maps) for exact boundaries and determinations or contact USDA Natural Resources Conservation Service (NRCS). **The imagery displayed on this map was collected in calendar year 2023.**



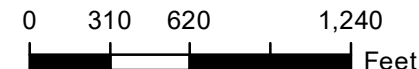
## Farm 8687

S11 T141N R55W

Phy Cnty: Cass

2024 Program Year

Map Created April 19, 2024



### Unless Otherwise Noted:

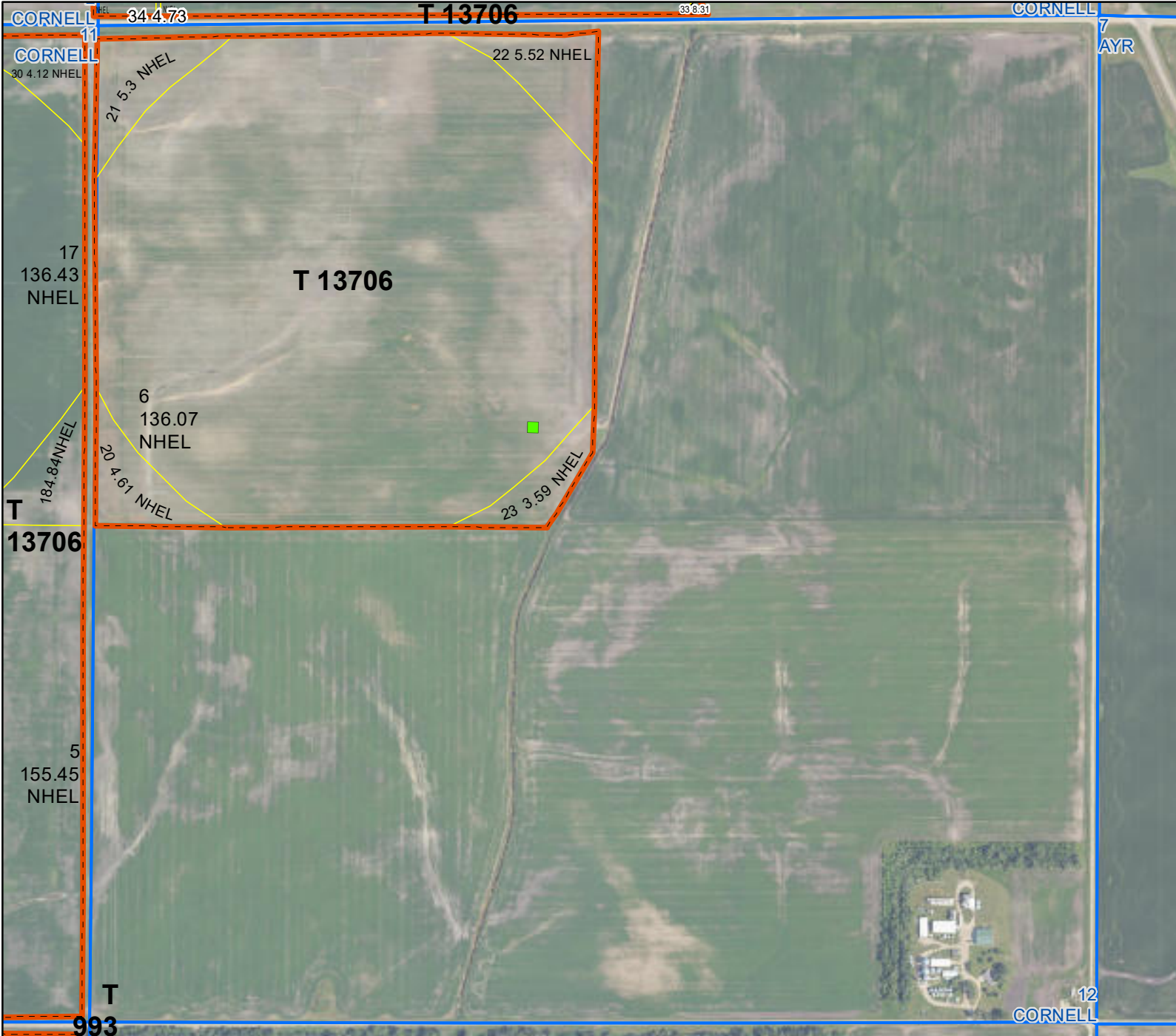
- Barley = Spring for Grain
- Canola = Spring for Processing
- Corn = Yellow for Grain
- Flax = Common for Grain
- Oats = Spring for Grain
- Soybeans = Common for Grain
- Sunflowers = Oil for Grain
- Wheat = Spring for Grain
- All fields are non-irrigated
- Shares are 100% to operator

### Common Land Unit

- Tract Boundary
- Non-Cropland
- Cropland
- CRP
- PLSS

### Wetland Determination Identifiers

- Restricted Use
- Limited Restrictions
- Exempt from Conservation Compliance Provisions



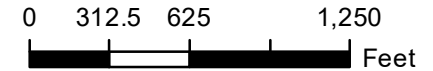
## Farm 8687

**S12 T141N R55W**

Phy Cnty: Cass

**2024 Program Year**

Map Created April 19, 2024



**Unless Otherwise Noted:**

- Barley = Spring for Grain
- Canola = Spring for Processing
- Corn = Yellow for Grain
- Flax = Common for Grain
- Oats = Spring for Grain
- Soybeans = Common for Grain
- Sunflowers = Oil for Grain
- Wheat = Spring for Grain
- All fields are non-irrigated
- Shares are 100% to operator

**Common Land Unit**

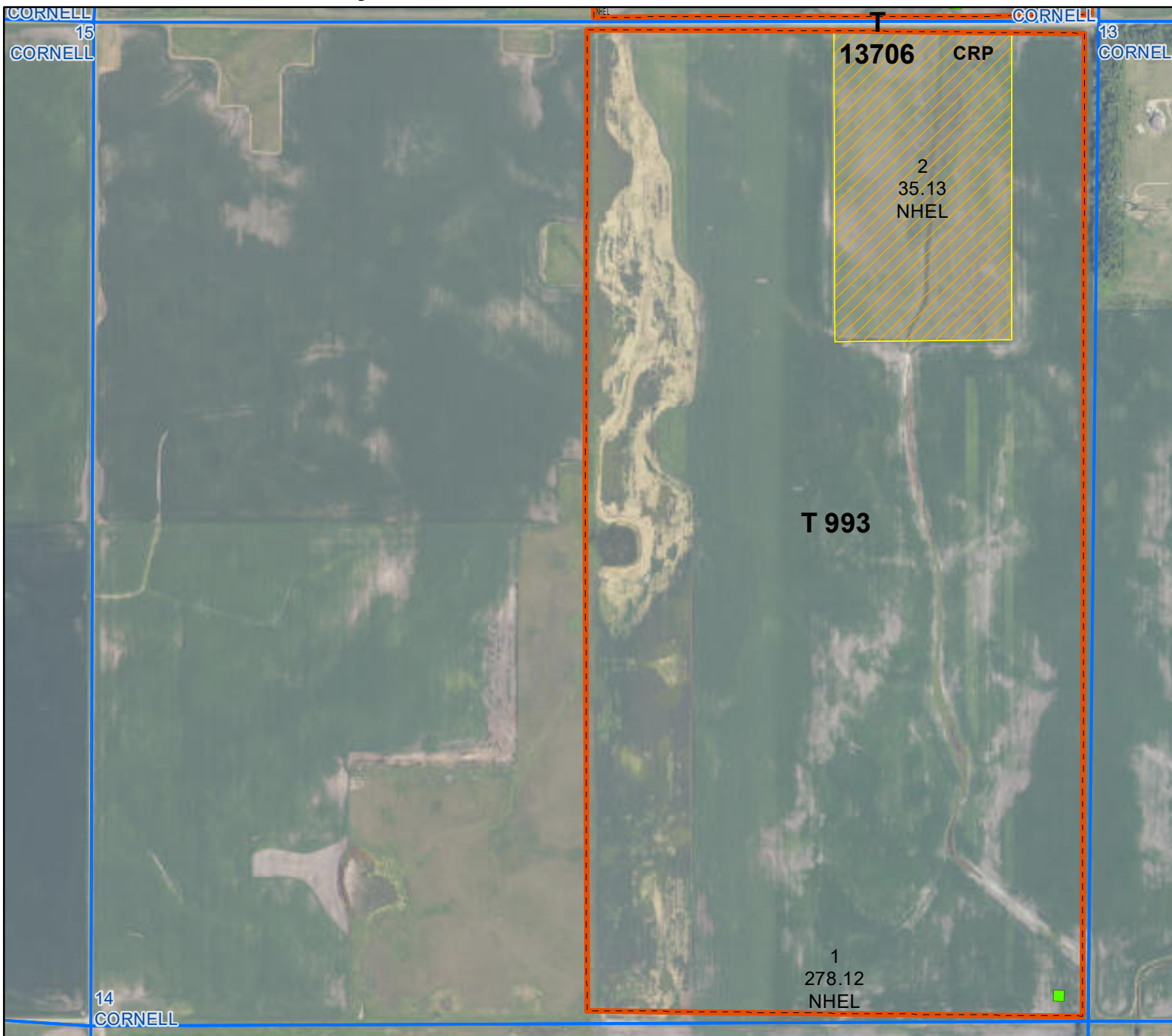
- Tract Boundary
- Non-Cropland
- Cropland
- PLSS

**Wetland Determination Identifiers**

- Restricted Use
- Limited Restrictions
- Exempt from Conservation Compliance Provisions

United States Department of Agriculture (USDA) Farm Service Agency (FSA) maps are for FSA Program administration only. This map does not represent a legal survey or reflect actual ownership; rather it depicts the information provided directly from the producer and/or National Agricultural Imagery Program (NAIP) imagery. The producer accepts the data 'as is' and assumes all risks associated with its use. USDA-FSA assumes no responsibility for actual or consequential damage incurred as a result of any user's reliance on this data outside FSA Programs. Wetland identifiers do not represent the size, shape, or specific determination of the area. Refer to your original determination (CPA-026 and attached maps) for exact boundaries and determinations or contact USDA Natural Resources Conservation Service (NRCS). **The imagery displayed on this map was collected in calendar year 2023.**





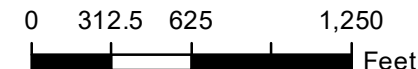
## Farm 8687

**S14 T141N R55W**

Phy Cnty: Cass

**2024 Program Year**

Map Created April 19, 2024



**Unless Otherwise Noted:**

- Barley = Spring for Grain
- Canola = Spring for Processing
- Corn = Yellow for Grain
- Flax = Common for Grain
- Oats = Spring for Grain
- Soybeans = Common for Grain
- Sunflowers = Oil for Grain
- Wheat = Spring for Grain
- All fields are non-irrigated
- Shares are 100% to operator

### Common Land Unit

- Tract Boundary
- Cropland
- CRP
- PLSS

### Wetland Determination Identifiers

- Restricted Use
- Limited Restrictions
- Exempt from Conservation Compliance Provisions



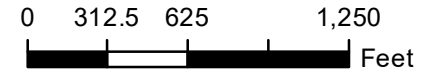
### Farm 8687

S31 T142N R54W

Phy Cnty: Cass

2024 Program Year

Map Created April 19, 2024



- Unless Otherwise Noted:**
- Barley = Spring for Grain
  - Canola = Spring for Processing
  - Corn = Yellow for Grain
  - Flax = Common for Grain
  - Oats = Spring for Grain
  - Soybeans = Common for Grain
  - Sunflowers = Oil for Grain
  - Wheat = Spring for Grain
  - All fields are non-irrigated
  - Shares are 100% to operator

### Common Land Unit

- Tract Boundary
- Non-Cropland
- Cropland
- CRP
- PLSS

### Wetland Determination Identifiers

- Restricted Use
- Limited Restrictions
- Exempt from Conservation Compliance Provisions

United States Department of Agriculture (USDA) Farm Service Agency (FSA) maps are for FSA Program administration only. This map does not represent a legal survey or reflect actual ownership; rather it depicts the information provided directly from the producer and/or National Agricultural Imagery Program (NAIP) imagery. The producer accepts the data 'as is' and assumes all risks associated with its use. USDA-FSA assumes no responsibility for actual or consequential damage incurred as a result of any user's reliance on this data outside FSA Programs. Wetland identifiers do not represent the size, shape, or specific determination of the area. Refer to your original determination (CPA-026 and attached maps) for exact boundaries and determinations or contact USDA Natural Resources Conservation Service (NRCS). **The imagery displayed on this map was collected in calendar year 2023.**



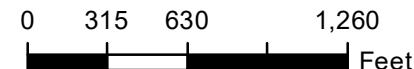
# Farm 8687

**S32 T142N R54W**

Phy Cnty: Cass

**2024 Program Year**

Map Created April 19, 2024



- Unless Otherwise Noted:**
- Barley = Spring for Grain
  - Canola = Spring for Processing
  - Corn = Yellow for Grain
  - Flax = Common for Grain
  - Oats = Spring for Grain
  - Soybeans = Common for Grain
  - Sunflowers = Oil for Grain
  - Wheat = Spring for Grain
  - All fields are non-irrigated
  - Shares are 100% to operator

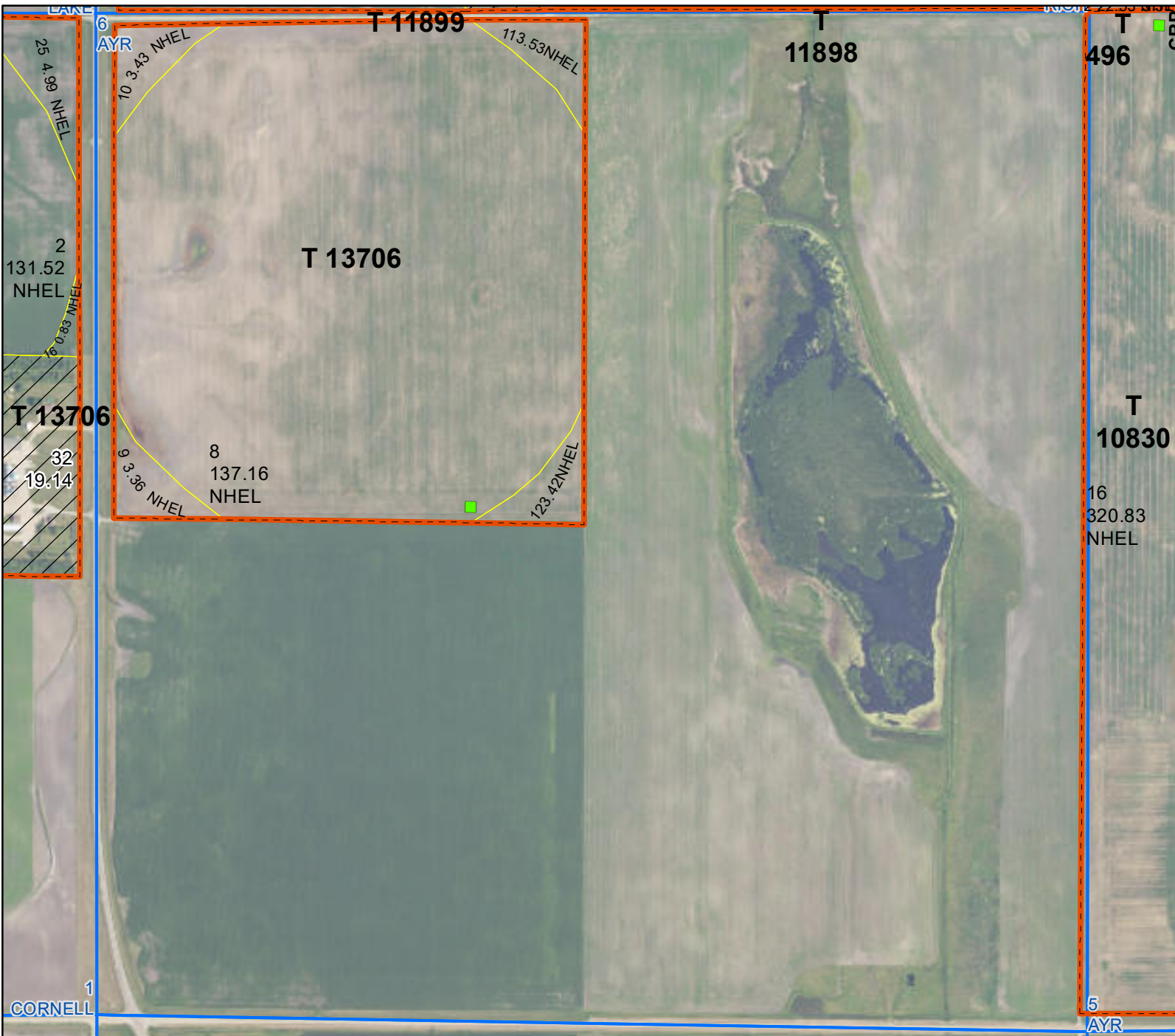
## Common Land Unit

- Tract Boundary
- Cropland
- CRP
- PLSS

## Wetland Determination Identifiers

- Restricted Use
- Limited Restrictions
- Exempt from Conservation Compliance Provisions

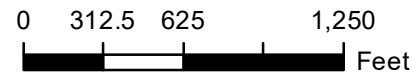
United States Department of Agriculture (USDA) Farm Service Agency (FSA) maps are for FSA Program administration only. This map does not represent a legal survey or reflect actual ownership; rather it depicts the information provided directly from the producer and/or National Agricultural Imagery Program (NAIP) imagery. The producer accepts the data 'as is' and assumes all risks associated with its use. USDA-FSA assumes no responsibility for actual or consequential damage incurred as a result of any user's reliance on this data outside FSA Programs. Wetland identifiers do not represent the size, shape, or specific determination of the area. Refer to your original determination (CPA-026 and attached maps) for exact boundaries and determinations or contact USDA Natural Resources Conservation Service (NRCS). **The imagery displayed on this map was collected in calendar year 2023.**



### Farm 8687

**S6 T141N R54W**  
Phy Cnty: Cass

2024 Program Year  
Map Created April 19, 2024



- Unless Otherwise Noted:**
- Barley = Spring for Grain
  - Canola = Spring for Processing
  - Corn = Yellow for Grain
  - Flax = Common for Grain
  - Oats = Spring for Grain
  - Soybeans = Common for Grain
  - Sunflowers = Oil for Grain
  - Wheat = Spring for Grain
  - All fields are non-irrigated
  - Shares are 100% to operator

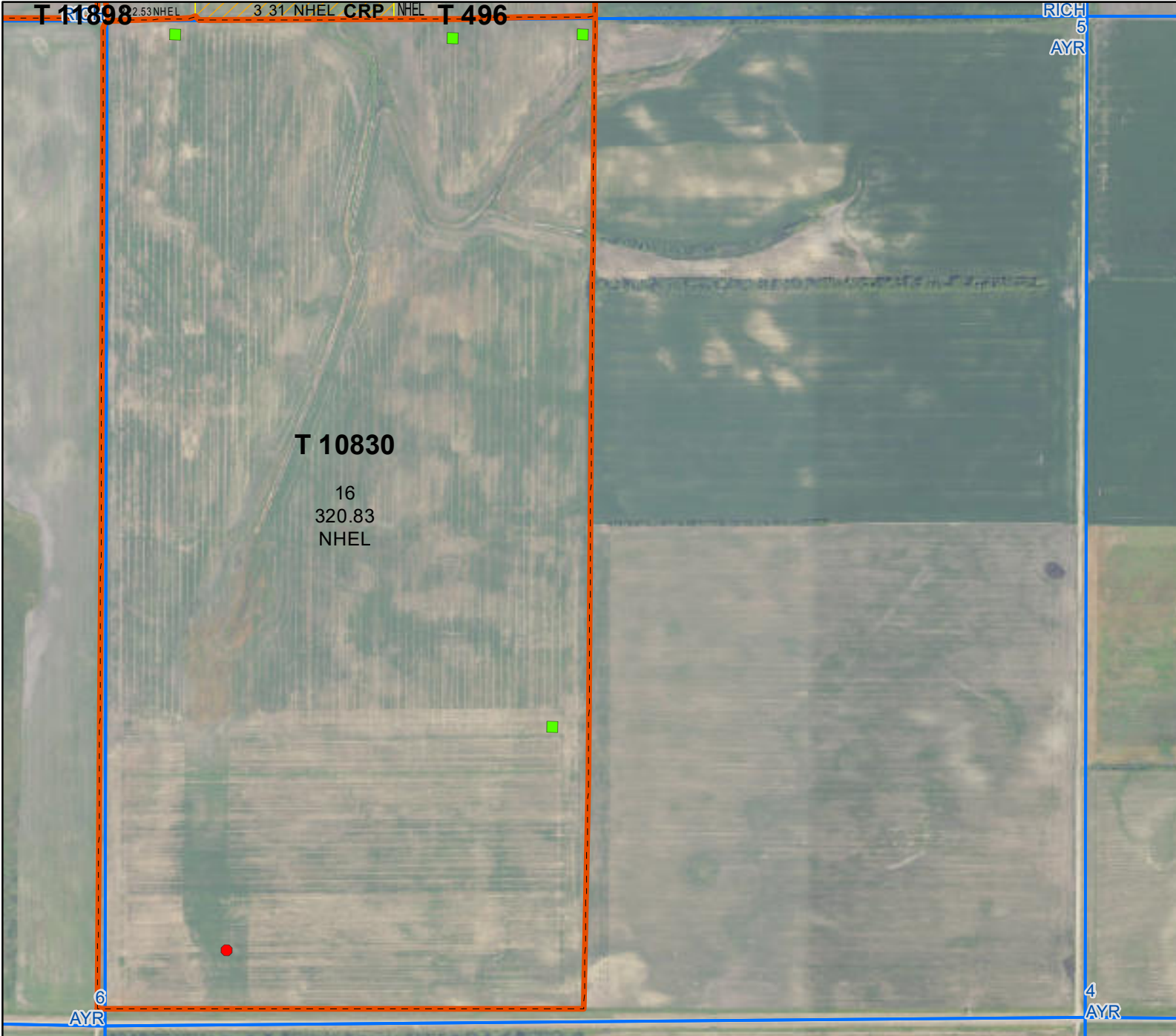
### Common Land Unit

- Tract Boundary
- Non-Cropland
- Cropland
- CRP
- PLSS

### Wetland Determination Identifiers

- Restricted Use
- Limited Restrictions
- Exempt from Conservation Compliance Provisions

United States Department of Agriculture (USDA) Farm Service Agency (FSA) maps are for FSA Program administration only. This map does not represent a legal survey or reflect actual ownership; rather it depicts the information provided directly from the producer and/or National Agricultural Imagery Program (NAIP) imagery. The producer accepts the data 'as is' and assumes all risks associated with its use. USDA-FSA assumes no responsibility for actual or consequential damage incurred as a result of any user's reliance on this data outside FSA Programs. Wetland identifiers do not represent the size, shape, or specific determination of the area. Refer to your original determination (CPA-026 and attached maps) for exact boundaries and determinations or contact USDA Natural Resources Conservation Service (NRCS). **The imagery displayed on this map was collected in calendar year 2023.**



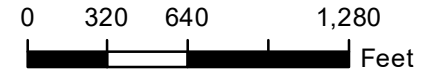
## Farm 8687

**S5 T141N R54W**

Phy Cnty: Cass

**2024 Program Year**

Map Created April 19, 2024



- Unless Otherwise Noted:**
- Barley = Spring for Grain
  - Canola = Spring for Processing
  - Corn = Yellow for Grain
  - Flax = Common for Grain
  - Oats = Spring for Grain
  - Soybeans = Common for Grain
  - Sunflowers = Oil for Grain
  - Wheat = Spring for Grain
  - All fields are non-irrigated
  - Shares are 100% to operator

### Common Land Unit

- Tract Boundary
- Cropland
- CRP
- PLSS

### Wetland Determination Identifiers

- Restricted Use
- Limited Restrictions
- Exempt from Conservation Compliance Provisions

United States Department of Agriculture (USDA) Farm Service Agency (FSA) maps are for FSA Program administration only. This map does not represent a legal survey or reflect actual ownership; rather it depicts the information provided directly from the producer and/or National Agricultural Imagery Program (NAIP) imagery. The producer accepts the data 'as is' and assumes all risks associated with its use. USDA-FSA assumes no responsibility for actual or consequential damage incurred as a result of any user's reliance on this data outside FSA Programs. Wetland identifiers do not represent the size, shape, or specific determination of the area. Refer to your original determination (CPA-026 and attached maps) for exact boundaries and determinations or contact USDA Natural Resources Conservation Service (NRCS). **The imagery displayed on this map was collected in calendar year 2023.**



Abbreviated 156 Farm Record

Operator Name

CRP Contract Number(s)

Recon ID : 11024, 11461, 11462,

Transferred From 11463 : None

ARCPLC G//F Eligibility : None

: Eligible

Farm Land Data

Farmland	Cropland	DCP Cropland	WBP	EWP	WRP	GRP	Sugarcane	Farm Status	Number Of Tracts
3,165.34	3,114.21	3,114.21	0.00	0.00	0.00	0.00	0.0	Active	11
State Conservation	Other Conservation	Effective DCP Cropland	Double Cropped		CRP	MPL	DCP Ag.Rel. Activity	SOD	
0.00	0.00	3,019.36	0.00		94.85	0.00	0.00	0.00	

Crop Election Choice

ARC Individual	ARC County	Price Loss Coverage
None	CORN, SNFLR, SOYBN	None

DCP Crop Data

Crop Name	Base Acres	CCC-505 CRP Reduction Acres	PLC Yield	HIP
Corn	934.00	0.00	121	21
Sunflowers	226.90	0.00	1419	
Soybeans	1,505.40	0.00	28	13
<b>TOTAL</b>	<b>2,666.30</b>	<b>0.00</b>		

NOTES

--

Tract Number : 496

Description : SW 32-142-54

FSA Physical Location : NORTH DAKOTA/CASS

ANSI Physical Location : NORTH DAKOTA/CASS

BIA Unit Range Number :

HEL Status : NHEL: No agricultural commodity planted on undetermined fields

Wetland Status : Tract does not contain a wetland

WL Violations : None

Owners : FEDER PROPERTIES LLP

Other Producers : None

Recon ID : None

Tract Land Data

Farm Land	Cropland	DCP Cropland	WBP	EWP	WRP	GRP	Sugarcane
158.05	158.05	158.05	0.00	0.00	0.00	0.00	0.0

**Abbreviated 156 Farm Record**

**Tract 496 Continued ...**

State Conservation	Other Conservation	Effective DCP Cropland	Double Cropped	CRP	MPL	DCP Ag. Rel Activity	SOD
0.00	0.00	127.05	0.00	31.00	0.00	0.00	0.00

**DCP Crop Data**

Crop Name	Base Acres	CCC-505 CRP Reduction Acres	PLC Yield
Corn	39.41	0.00	121
Sunflowers	9.58	0.00	1419
Soybeans	63.53	0.00	28
<b>TOTAL</b>	<b>112.52</b>	<b>0.00</b>	

**NOTES**

**Tract Number** : 993

**Description** : E2 14-141-55  
**FSA Physical Location** : NORTH DAKOTA/CASS  
**ANSI Physical Location** : NORTH DAKOTA/CASS  
**BIA Unit Range Number** :  
**HEL Status** : NHEL: No agricultural commodity planted on undetermined fields  
**Wetland Status** : Tract does not contain a wetland  
**WL Violations** : None  
**Owners** : FEDER PROPERTIES LLP  
**Other Producers** : None  
**Recon ID** : None

**Tract Land Data**

Farm Land	Cropland	DCP Cropland	WBP	EWP	WRP	GRP	Sugarcane
313.25	313.25	313.25	0.00	0.00	0.00	0.00	0.0
State Conservation	Other Conservation	Effective DCP Cropland	Double Cropped	CRP	MPL	DCP Ag. Rel Activity	SOD
0.00	0.00	278.12	0.00	35.13	0.00	0.00	0.00

**DCP Crop Data**

Crop Name	Base Acres	CCC-505 CRP Reduction Acres	PLC Yield
Corn	86.30	0.00	121
Sunflowers	20.97	0.00	1419
Soybeans	139.10	0.00	28
<b>TOTAL</b>	<b>246.37</b>	<b>0.00</b>	

**NOTES**

**Abbreviated 156 Farm Record**

**Tract Number : 1259**

**Description** : N2 2-141-55  
**FSA Physical Location** : NORTH DAKOTA/CASS  
**ANSI Physical Location** : NORTH DAKOTA/CASS  
**BIA Unit Range Number** :  
**HEL Status** : NHEL: No agricultural commodity planted on undetermined fields  
**Wetland Status** : Tract does not contain a wetland  
**WL Violations** : None  
**Owners** : FEDER PROPERTIES LLP  
**Other Producers** : None  
**Recon ID** : None

**Tract Land Data**

Farm Land	Cropland	DCP Cropland	WBP	EWP	WRP	GRP	Sugarcane
323.88	323.88	323.88	0.00	0.00	0.00	0.00	0.0
State Conservation	Other Conservation	Effective DCP Cropland	Double Cropped	CRP	MPL	DCP Ag. Rel Activity	SOD
0.00	0.00	308.58	0.00	15.30	0.00	0.00	0.00

**DCP Crop Data**

Crop Name	Base Acres	CCC-505 CRP Reduction Acres	PLC Yield
Corn	95.74	0.00	121
Sunflowers	23.26	0.00	1419
Soybeans	154.30	0.00	28
<b>TOTAL</b>	<b>273.30</b>	<b>0.00</b>	

**NOTES**

**Tract Number : 1261**

**Description** : SW 27; NW 34-142-55  
**FSA Physical Location** : NORTH DAKOTA/CASS  
**ANSI Physical Location** : NORTH DAKOTA/CASS  
**BIA Unit Range Number** :  
**HEL Status** : NHEL: No agricultural commodity planted on undetermined fields  
**Wetland Status** : Tract contains a wetland or farmed wetland  
**WL Violations** : None  
**Owners** : FEDER PROPERTIES LLP  
**Other Producers** : None  
**Recon ID** : None



**Abbreviated 156 Farm Record**

**Tract Land Data**

Tract 1261 Continued ...

Farm Land	Cropland	DCP Cropland	WBP	EWP	WRP	GRP	Sugarcane
316.16	313.55	313.55	0.00	0.00	0.00	0.00	0.0
State Conservation	Other Conservation	Effective DCP Cropland	Double Cropped	CRP	MPL	DCP Ag. Rel Activity	SOD
0.00	0.00	300.13	0.00	13.42	0.00	0.00	0.00

**DCP Crop Data**

Crop Name	Base Acres	CCC-505 CRP Reduction Acres	PLC Yield
Corn	93.03	0.00	121
Sunflowers	22.60	0.00	1419
Soybeans	149.94	0.00	28
<b>TOTAL</b>	<b>265.57</b>	<b>0.00</b>	

**NOTES**

**Tract Number : 4404**

**Description :** EAST OF DRAIN S2 3-141-55  
**FSA Physical Location :** NORTH DAKOTA/CASS  
**ANSI Physical Location :** NORTH DAKOTA/CASS  
**BIA Unit Range Number :**  
**HEL Status :** NHEL: No agricultural commodity planted on undetermined fields  
**Wetland Status :** Tract does not contain a wetland  
**WL Violations :** None  
**Owners :** FEDER PROPERTIES LLP  
**Other Producers :** None  
**Recon ID :** None

**Tract Land Data**

Farm Land	Cropland	DCP Cropland	WBP	EWP	WRP	GRP	Sugarcane
184.62	184.62	184.62	0.00	0.00	0.00	0.00	0.0
State Conservation	Other Conservation	Effective DCP Cropland	Double Cropped	CRP	MPL	DCP Ag. Rel Activity	SOD
0.00	0.00	184.62	0.00	0.00	0.00	0.00	0.00

**DCP Crop Data**

Crop Name	Base Acres	CCC-505 CRP Reduction Acres	PLC Yield
Corn	57.25	0.00	121
Sunflowers	13.91	0.00	1419

**Abbreviated 156 Farm Record**

**Tract 4404 Continued ...**

Soybeans	92.28	0.00	28
<b>TOTAL</b>	<b>163.44</b>	<b>0.00</b>	

**NOTES**

**Tract Number : 9957**

**Description :** EAST OF DRAIN NE 36-142-55  
**FSA Physical Location :** NORTH DAKOTA/CASS  
**ANSI Physical Location :** NORTH DAKOTA/CASS  
**BIA Unit Range Number :**  
**HEL Status :** NHEL: No agricultural commodity planted on undetermined fields  
**Wetland Status :** Tract does not contain a wetland  
**WL Violations :** None  
**Owners :** FEDER PROPERTIES LLP  
**Other Producers :** None  
**Recon ID :** None

**Tract Land Data**

Farm Land	Cropland	DCP Cropland	WBP	EWP	WRP	GRP	Sugarcane
66.51	66.51	66.51	0.00	0.00	0.00	0.00	0.0
State Conservation	Other Conservation	Effective DCP Cropland	Double Cropped	CRP	MPL	DCP Ag. Rel Activity	SOD
0.00	0.00	66.51	0.00	0.00	0.00	0.00	0.00

**DCP Crop Data**

Crop Name	Base Acres	CCC-505 CRP Reduction Acres	PLC Yield
Corn	20.64	0.00	121
Sunflowers	5.01	0.00	1419
Soybeans	33.27	0.00	28
<b>TOTAL</b>	<b>58.92</b>	<b>0.00</b>	

**NOTES**

**Tract Number : 9959**

**Description :** WEST OF DRAIN NE 36-142-55  
**FSA Physical Location :** NORTH DAKOTA/CASS  
**ANSI Physical Location :** NORTH DAKOTA/CASS  
**BIA Unit Range Number :**  
**HEL Status :** NHEL: No agricultural commodity planted on undetermined fields  
**Wetland Status :** Tract does not contain a wetland

**Abbreviated 156 Farm Record**

**Tract 9959 Continued ...**

**WL Violations** : None  
**Owners** : FEDER PROPERTIES LLP  
**Other Producers** : JASON KEITH SCHATZKE, TANYA SUE SCHATZKE, KEITH HAROLD SCHATZKE  
**Recon ID** : None

**Tract Land Data**

Farm Land	Cropland	DCP Cropland	WBP	EWP	WRP	GRP	Sugarcane
82.66	79.73	79.73	0.00	0.00	0.00	0.00	0.0
State Conservation	Other Conservation	Effective DCP Cropland	Double Cropped	CRP	MPL	DCP Ag. Rel Activity	SOD
0.00	0.00	79.73	0.00	0.00	0.00	0.00	0.00

**DCP Crop Data**

Crop Name	Base Acres	CCC-505 CRP Reduction Acres	PLC Yield
Corn	24.75	0.00	121
Sunflowers	6.01	0.00	1419
Soybeans	39.89	0.00	28
<b>TOTAL</b>	<b>70.65</b>	<b>0.00</b>	

**NOTES**

**Tract Number** : 10830  
**Description** : W2 5-141-54  
**FSA Physical Location** : NORTH DAKOTA/CASS  
**ANSI Physical Location** : NORTH DAKOTA/CASS  
**BIA Unit Range Number** :  
**HEL Status** : NHEL: No agricultural commodity planted on undetermined fields  
**Wetland Status** : Tract contains a wetland or farmed wetland  
**WL Violations** : None  
**Owners** : FEDER PROPERTIES LLP  
**Other Producers** : None  
**Recon ID** : None

**Tract Land Data**

Farm Land	Cropland	DCP Cropland	WBP	EWP	WRP	GRP	Sugarcane
320.83	320.83	320.83	0.00	0.00	0.00	0.00	0.0
State Conservation	Other Conservation	Effective DCP Cropland	Double Cropped	CRP	MPL	DCP Ag. Rel Activity	SOD
0.00	0.00	320.83	0.00	0.00	0.00	0.00	0.00

**Abbreviated 156 Farm Record**

**DCP Crop Data**

Tract 10830 Continued ...

Crop Name	Base Acres	CCC-505 CRP Reduction Acres	PLC Yield
Corn	97.04	0.00	121
Sunflowers	23.57	0.00	1419
Soybeans	156.41	0.00	28
<b>TOTAL</b>	<b>277.02</b>	<b>0.00</b>	

**NOTES**

**Tract Number : 11898**

**Description :** SE 31-142-54  
**FSA Physical Location :** NORTH DAKOTA/CASS  
**ANSI Physical Location :** NORTH DAKOTA/CASS  
**BIA Unit Range Number :**  
**HEL Status :** NHEL: No agricultural commodity planted on undetermined fields  
**Wetland Status :** Tract does not contain a wetland  
**WL Violations :** None  
**Owners :** FEDER PROPERTIES LLP  
**Other Producers :** None  
**Recon ID :** None

**Tract Land Data**

Farm Land	Cropland	DCP Cropland	WBP	EWP	WRP	GRP	Sugarcane
156.40	156.31	156.31	0.00	0.00	0.00	0.00	0.0
State Conservation	Other Conservation	Effective DCP Cropland	Double Cropped	CRP	MPL	DCP Ag. Rel Activity	SOD
0.00	0.00	156.31	0.00	0.00	0.00	0.00	0.00

**DCP Crop Data**

Crop Name	Base Acres	CCC-505 CRP Reduction Acres	PLC Yield
Corn	48.47	0.00	121
Sunflowers	11.78	0.00	1419
Soybeans	78.13	0.00	28
<b>TOTAL</b>	<b>138.38</b>	<b>0.00</b>	

**NOTES**

**Abbreviated 156 Farm Record**

**Tract Number** : 11899  
**Description** : SW 31-142-54  
**FSA Physical Location** : NORTH DAKOTA/CASS  
**ANSI Physical Location** : NORTH DAKOTA/CASS  
**BIA Unit Range Number** :  
**HEL Status** : NHEL: No agricultural commodity planted on undetermined fields  
**Wetland Status** : Tract contains a wetland or farmed wetland  
**WL Violations** : None  
**Owners** : FEDER PROPERTIES LLP  
**Other Producers** : None  
**Recon ID** : None

**Tract Land Data**

Farm Land	Cropland	DCP Cropland	WBP	EWP	WRP	GRP	Sugarcane
147.84	134.96	134.96	0.00	0.00	0.00	0.00	0.0
State Conservation	Other Conservation	Effective DCP Cropland	Double Cropped	CRP	MPL	DCP Ag. Rel Activity	SOD
0.00	0.00	134.96	0.00	0.00	0.00	0.00	0.00

**DCP Crop Data**

Crop Name	Base Acres	CCC-505 CRP Reduction Acres	PLC Yield
Corn	41.84	0.00	121
Sunflowers	10.17	0.00	1419
Soybeans	67.44	0.00	28
<b>TOTAL</b>	<b>119.45</b>	<b>0.00</b>	

**NOTES**

**Tract Number** : 13706  
**Description** : N2; SW W OF D 1; E2 11; NW 12-141-55; NW 6-141-54  
**FSA Physical Location** : NORTH DAKOTA/CASS  
**ANSI Physical Location** : NORTH DAKOTA/CASS  
**BIA Unit Range Number** :  
**HEL Status** : NHEL: No agricultural commodity planted on undetermined fields  
**Wetland Status** : Tract does not contain a wetland  
**WL Violations** : None  
**Owners** : FEDER PROPERTIES LLP  
**Other Producers** : None  
**Recon ID** : None

**Tract Land Data**

Farm Land	Cropland	DCP Cropland	WBP	EWP	WRP	GRP	Sugarcane
1,095.14	1,062.52	1,062.52	0.00	0.00	0.00	0.00	0.0

**Abbreviated 156 Farm Record**

**Tract 13706 Continued ...**

State Conservation	Other Conservation	Effective DCP Cropland	Double Cropped	CRP	MPL	DCP Ag. Rel Activity	SOD
0.00	0.00	1,062.52	0.00	0.00	0.00	0.00	0.00

**DCP Crop Data**

Crop Name	Base Acres	CCC-505 CRP Reduction Acres	PLC Yield
Corn	329.53	0.00	121
Sunflowers	80.04	0.00	1419
Soybeans	531.11	0.00	28
<b>TOTAL</b>	<b>940.68</b>	<b>0.00</b>	

**NOTES**

--

*In accordance with Federal civil rights law and U.S. Department of Agriculture (USDA) civil rights regulations and policies, the USDA, its Agencies, offices, and employees, and institutions participating in or administering USDA programs are prohibited from discriminating based on race, color, national origin, religion, sex, gender identity (including gender expression), sexual orientation, disability, age, marital status, family/parental status, income derived from a public assistance program, political beliefs, or reprisal or retaliation for prior civil rights activity, in any program or activity conducted or funded by USDA (not all bases apply to all programs). Remedies and complaint filing deadlines vary by program or incident.*

*Persons with disabilities who require alternative means of communication for program information (e.g., Braille, large print, audiotape, American Sign Language, etc.) should contact the responsible Agency or USDA's TARGET Center at (202) 720-2600 (voice and TTY) or contact USDA through the Federal Relay Service at (800) 877-8339. Additionally, program information may be made available in languages other than English.*

*To file a program discrimination complaint, complete the USDA Program Discrimination Complaint Form, AD-3027, found online at [http://www.ascr.usda.gov/complaint\\_filing\\_cust.html](http://www.ascr.usda.gov/complaint_filing_cust.html) and at any USDA office or write a letter addressed to USDA and provide in the letter all of the information requested in the form. To request a copy of the complaint form, call (866) 632-9992. Submit your completed form or letter to USDA by: (1) mail: U.S. Department of Agriculture Office of the Assistant Secretary for Civil Rights 1400 Independence Avenue, SW Washington, D.C. 20250-9410; (2) fax: (202) 690-7442; or (3) e-mail: [program.intake@usda.gov](mailto:program.intake@usda.gov). USDA is an equal opportunity provider, employer, and lender.*