

**Common Land Unit**  
  Tract Boundary  
  PLSS

Non-Cropland

  Cropland

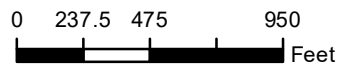
**Wetland Determination Identifiers**

- Restricted Use
- ▼ Limited Restrictions
- Exempt from Conservation
- Compliance Provisions

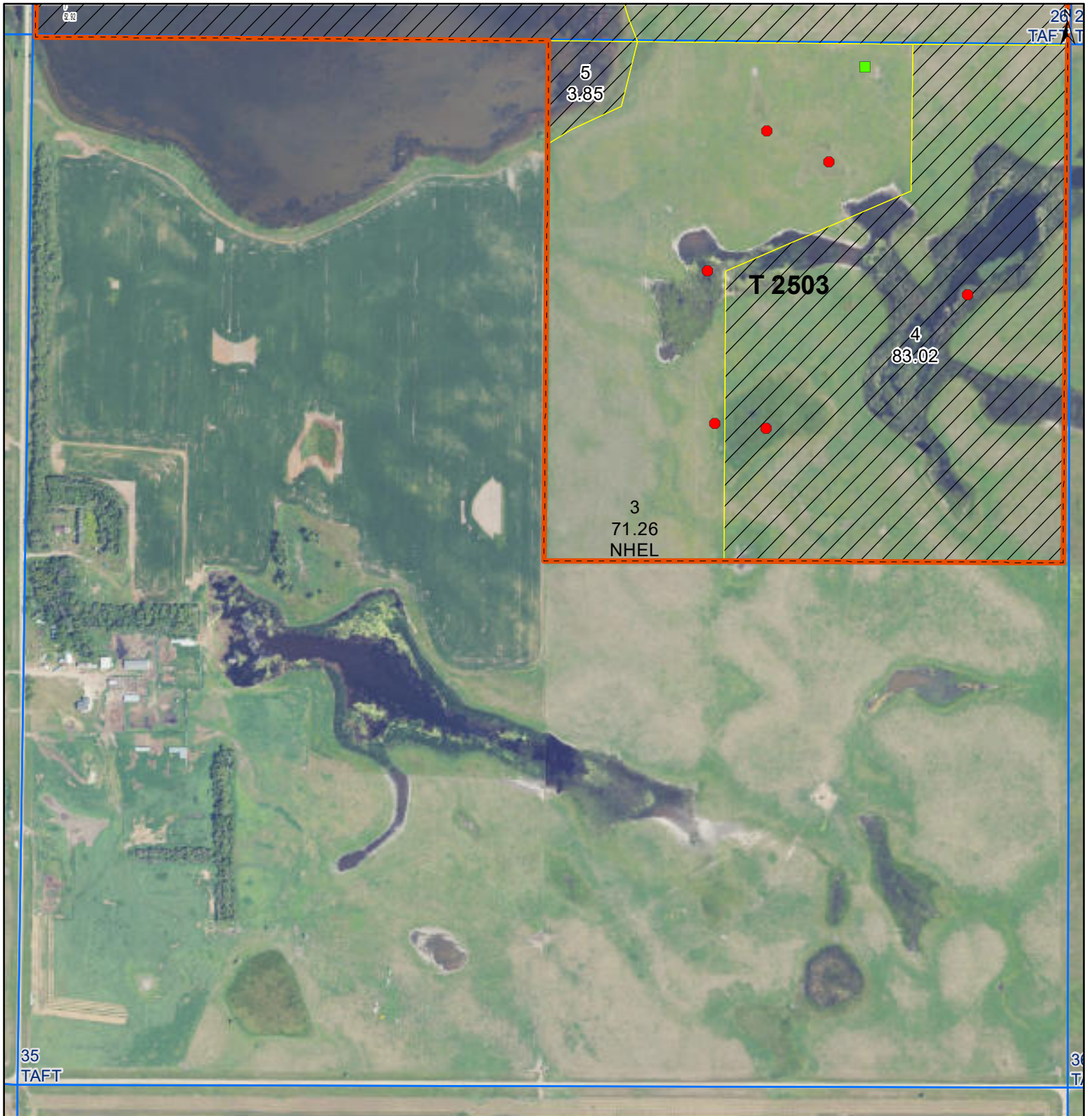
**Unless Otherwise Noted:**  
 All crops are for grain  
 All crops are non-irrigated  
 Shares are 100% to Operator

**2024 Program Year**  
 Map Created February 22, 2024

**S26 T138N R76W**  
 Phy Cnty: Burleigh



United States Department of Agriculture (USDA) Farm Service Agency (FSA) maps are for FSA Program administration only. This map does not represent a legal survey or reflect actual ownership; rather it depicts the information provided directly from the producer and/or National Agricultural Imagery Program (NAIP) imagery. The producer accepts the data 'as is' and assumes all risks associated with its use. USDA-FSA assumes no responsibility for actual or consequential damage incurred as a result of any user's reliance on this data outside FSA Programs. Wetland identifiers do not represent the size, shape, or specific determination of the area. Refer to your original determination (CPA-026 and attached maps) for exact boundaries and determinations or contact USDA Natural Resources Conservation Service (NRCS). **The imagery displayed on this map was collected in calendar year 2023.**



**Common Land Unit** Tract Boundary PLSS

Non-Cropland Cropland

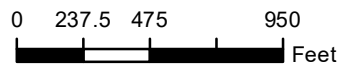
**Wetland Determination Identifiers**

- Restricted Use
- Limited Restrictions
- Exempt from Conservation
- Compliance Provisions

**Unless Otherwise Noted:**  
 All crops are for grain  
 All crops are non-irrigated  
 Shares are 100% to Operator

**2024 Program Year**  
 Map Created February 22, 2024

**S35 T138N R76W**  
 Phy Cnty: Burleigh



United States Department of Agriculture (USDA) Farm Service Agency (FSA) maps are for FSA Program administration only. This map does not represent a legal survey or reflect actual ownership; rather it depicts the information provided directly from the producer and/or National Agricultural Imagery Program (NAIP) imagery. The producer accepts the data 'as is' and assumes all risks associated with its use. USDA-FSA assumes no responsibility for actual or consequential damage incurred as a result of any user's reliance on this data outside FSA Programs. Wetland identifiers do not represent the size, shape, or specific determination of the area. Refer to your original determination (CPA-026 and attached maps) for exact boundaries and determinations or contact USDA Natural Resources Conservation Service (NRCS). **The imagery displayed on this map was collected in calendar year 2023.**