

Common Land Unit PLSS

 Cropland

 Tract Boundary

Wetland Determination Identifiers

- Restricted Use
- ▼ Limited Restrictions
- Exempt from Conservation Compliance Provisions

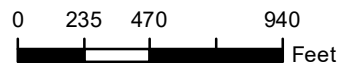
Unless Otherwise Noted:
 All crops are for grain
 All crops are non-irrigated
 Shares are 100% to Operator

2024 Program Year

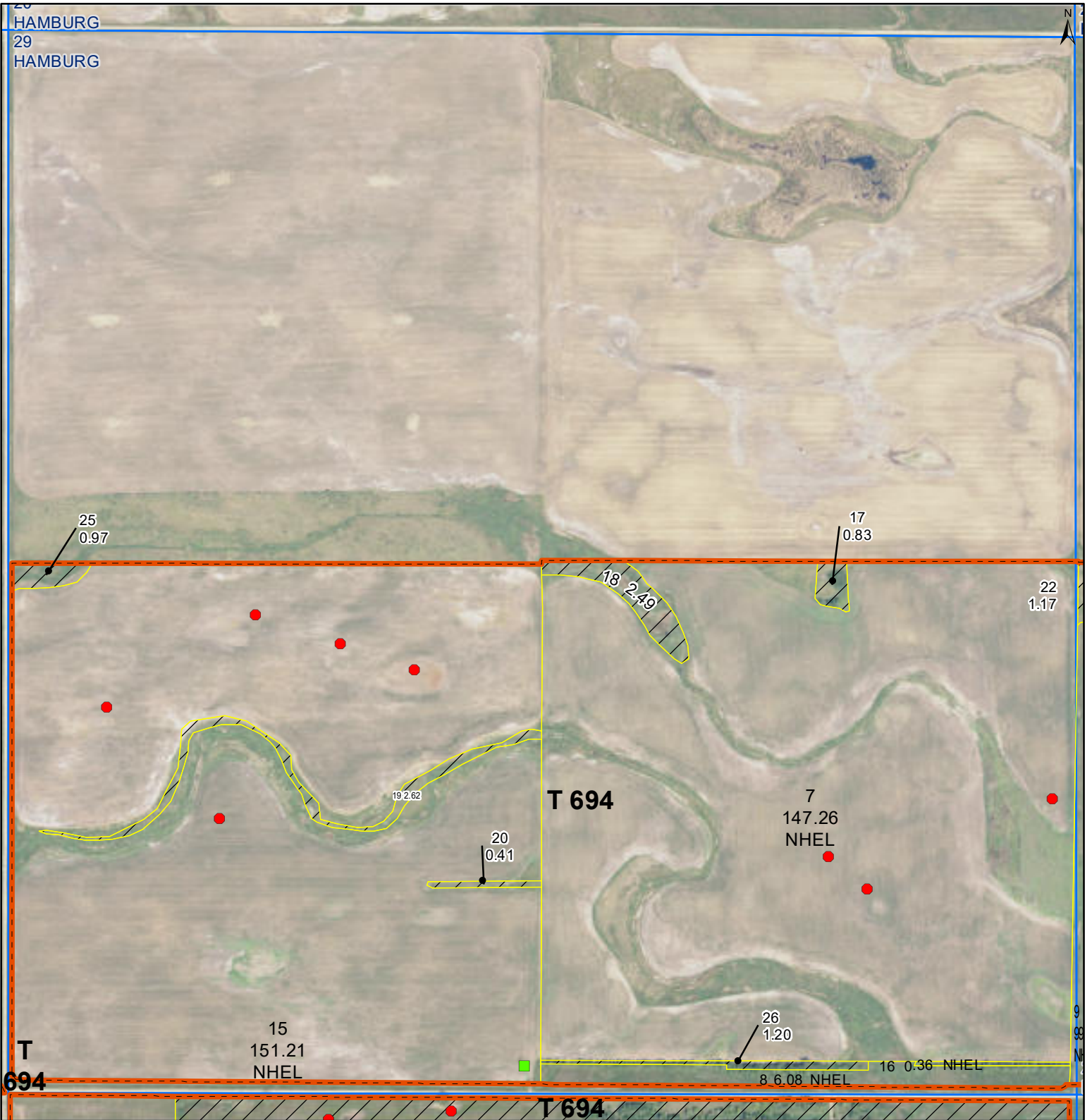
Map Created March 25, 2024

S30 T131N R64W

Phy Cnty: Dickey



United States Department of Agriculture (USDA) Farm Service Agency (FSA) maps are for FSA Program administration only. This map does not represent a legal survey or reflect actual ownership; rather it depicts the information provided directly from the producer and/or National Agricultural Imagery Program (NAIP) imagery. The producer accepts the data 'as is' and assumes all risks associated with its use. USDA-FSA assumes no responsibility for actual or consequential damage incurred as a result of any user's reliance on this data outside FSA Programs. Wetland identifiers do not represent the size, shape, or specific determination of the area. Refer to your original determination (CPA-026 and attached maps) for exact boundaries and determinations or contact USDA Natural Resources Conservation Service (NRCS). **The imagery displayed on this map was collected in calendar year 2023.**



Common Land Unit

 Tract Boundary
 PLSS
 Non-Cropland
 Cropland

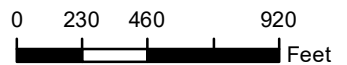
Wetland Determination Identifiers

 Restricted Use
 Limited Restrictions
 Exempt from Conservation Compliance Provisions

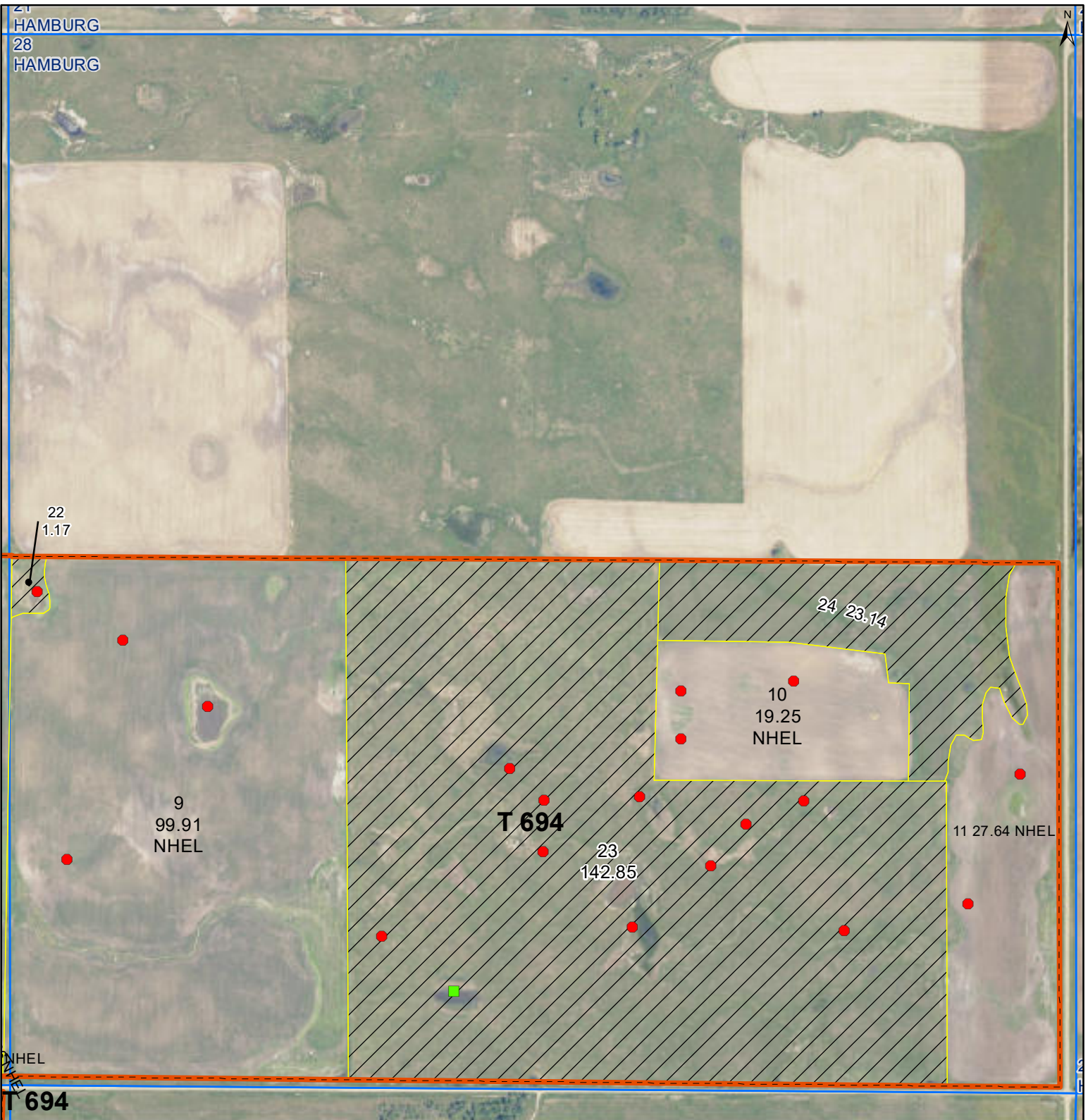
Unless Otherwise Noted:
 All crops are for grain
 All crops are non-irrigated
 Shares are 100% to Operator

2024 Program Year
 Map Created March 25, 2024

S29 T131N R64W
 Phy Cnty: Dickey



United States Department of Agriculture (USDA) Farm Service Agency (FSA) maps are for FSA Program administration only. This map does not represent a legal survey or reflect actual ownership; rather it depicts the information provided directly from the producer and/or National Agricultural Imagery Program (NAIP) imagery. The producer accepts the data 'as is' and assumes all risks associated with its use. USDA-FSA assumes no responsibility for actual or consequential damage incurred as a result of any user's reliance on this data outside FSA Programs. Wetland identifiers do not represent the size, shape, or specific determination of the area. Refer to your original determination (CPA-026 and attached maps) for exact boundaries and determinations or contact USDA Natural Resources Conservation Service (NRCS). **The imagery displayed on this map was collected in calendar year 2023.**



Common Land Unit

- Non-Cropland
- Cropland
- Tract Boundary
- PLSS

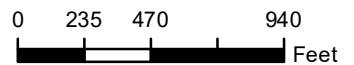
Wetland Determination Identifiers

- Restricted Use
- Limited Restrictions
- Exempt from Conservation Compliance Provisions

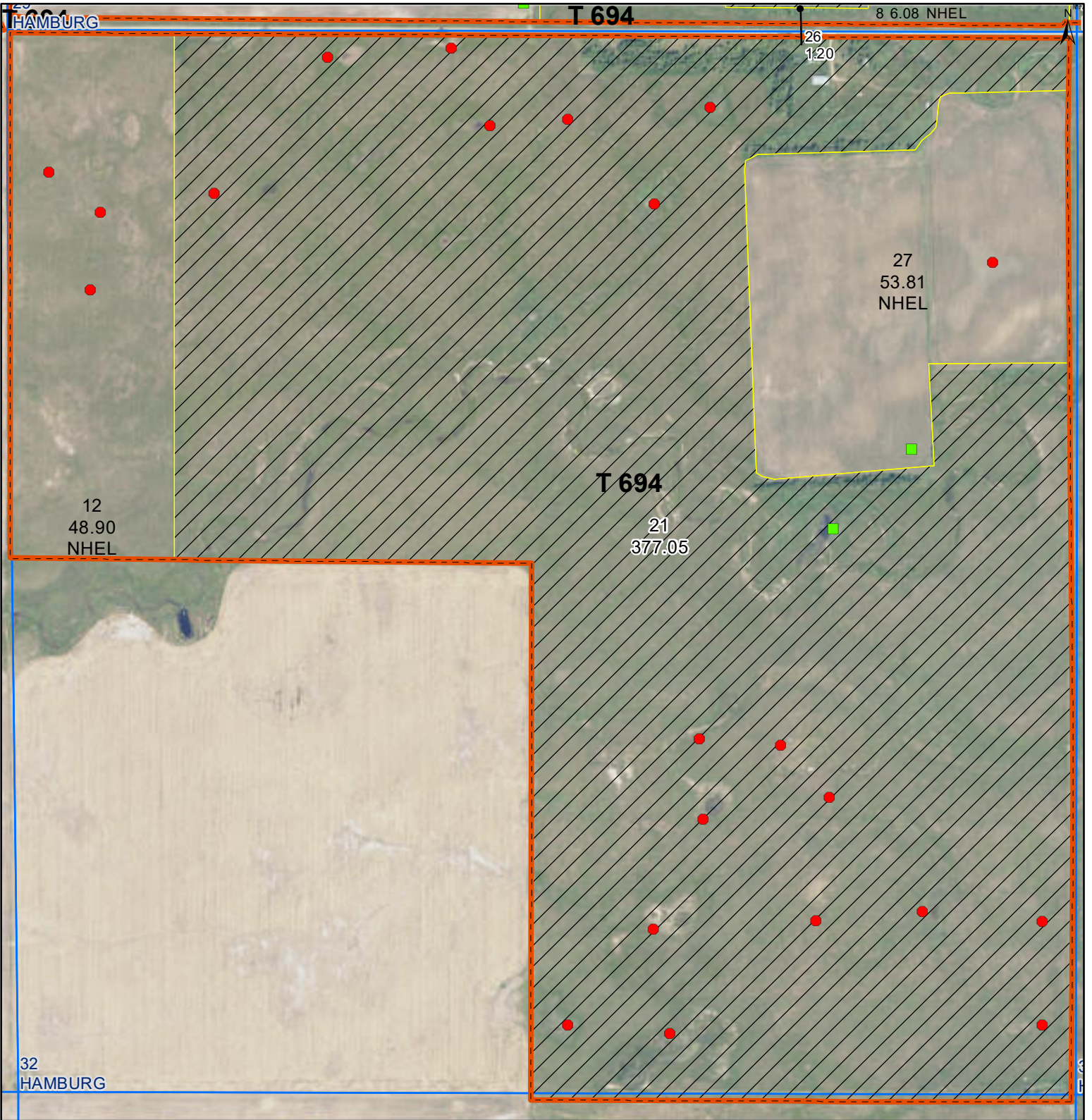
Unless Otherwise Noted:
 All crops are for grain
 All crops are non-irrigated
 Shares are 100% to Operator

2024 Program Year
 Map Created March 25, 2024

S28 T131N R64W
 Phy Cnty: Dickey



United States Department of Agriculture (USDA) Farm Service Agency (FSA) maps are for FSA Program administration only. This map does not represent a legal survey or reflect actual ownership; rather it depicts the information provided directly from the producer and/or National Agricultural Imagery Program (NAIP) imagery. The producer accepts the data 'as is' and assumes all risks associated with its use. USDA-FSA assumes no responsibility for actual or consequential damage incurred as a result of any user's reliance on this data outside FSA Programs. Wetland identifiers do not represent the size, shape, or specific determination of the area. Refer to your original determination (CPA-026 and attached maps) for exact boundaries and determinations or contact USDA Natural Resources Conservation Service (NRCS). **The imagery displayed on this map was collected in calendar year 2023.**



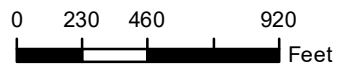
Common Land Unit
 Non-Cropland
 Cropland
 Tract Boundary
 PLSS

Wetland Determination Identifiers
 Restricted Use
 Limited Restrictions
 Exempt from Conservation Compliance Provisions

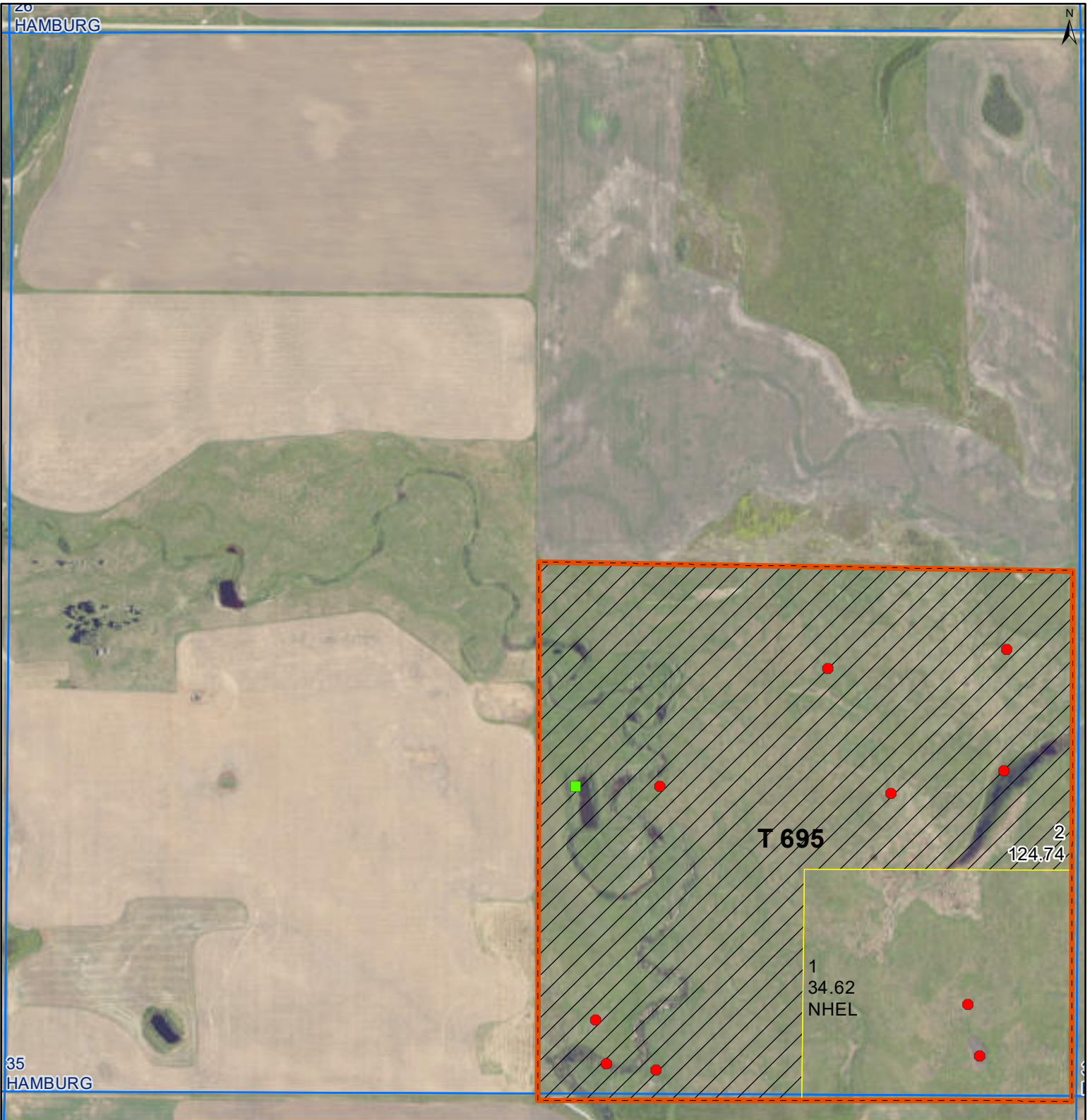
Unless Otherwise Noted:
 All crops are for grain
 All crops are non-irrigated
 Shares are 100% to Operator

2024 Program Year
 Map Created March 25, 2024

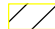

S32 T131N R64W
 Phy Cnty: Dickey






United States Department of Agriculture (USDA) Farm Service Agency (FSA) maps are for FSA Program administration only. This map does not represent a legal survey or reflect actual ownership; rather it depicts the information provided directly from the producer and/or National Agricultural Imagery Program (NAIP) imagery. The producer accepts the data 'as is' and assumes all risks associated with its use. USDA-FSA assumes no responsibility for actual or consequential damage incurred as a result of any user's reliance on this data outside FSA Programs. Wetland identifiers do not represent the size, shape, or specific determination of the area. Refer to your original determination (CPA-026 and attached maps) for exact boundaries and determinations or contact USDA Natural Resources Conservation Service (NRCS). **The imagery displayed on this map was collected in calendar year 2023.**



Common Land Unit  Tract Boundary  PLSS

 Non-Cropland  Cropland

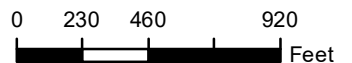
Wetland Determination Identifiers

-  Restricted Use
-  Limited Restrictions
-  Exempt from Conservation Compliance Provisions

Unless Otherwise Noted:
 All crops are for grain
 All crops are non-irrigated
 Shares are 100% to Operator

2024 Program Year
 Map Created March 25, 2024

S35 T131N R64W
 Phy Cnty: Dickey



United States Department of Agriculture (USDA) Farm Service Agency (FSA) maps are for FSA Program administration only. This map does not represent a legal survey or reflect actual ownership; rather it depicts the information provided directly from the producer and/or National Agricultural Imagery Program (NAIP) imagery. The producer accepts the data 'as is' and assumes all risks associated with its use. USDA-FSA assumes no responsibility for actual or consequential damage incurred as a result of any user's reliance on this data outside FSA Programs. Wetland identifiers do not represent the size, shape, or specific determination of the area. Refer to your original determination (CPA-026 and attached maps) for exact boundaries and determinations or contact USDA Natural Resources Conservation Service (NRCS). **The imagery displayed on this map was collected in calendar year 2023.**



Abbreviated 156 Farm Record

Operator Name

CRP Contract Number(s) : None
 Recon ID : None
 Transferred From : None
 ARCPLC G//F Eligibility : Eligible

Farm Land Data

Farmland	Cropland	DCP Cropland	WBP	EWP	WRP	GRP	Sugarcane	Farm Status	Number Of Tracts
1,262.90	710.17	710.17	0.00	0.00	0.00	0.00	0.0	Active	1
State Conservation	Other Conservation	Effective DCP Cropland	Double Cropped		CRP	MPL	DCP Ag.Rel. Activity	SOD	
0.00	0.00	710.17	0.00		0.00	0.00	0.00	0.00	

Crop Election Choice

ARC Individual	ARC County	Price Loss Coverage
None	WHEAT, CORN, SOYBN	None

DCP Crop Data

Crop Name	Base Acres	CCC-505 CRP Reduction Acres	PLC Yield	HIP
Wheat	40.56	0.00	36	
Corn	112.95	0.00	91	0
Soybeans	178.69	0.00	30	6
TOTAL	332.20	0.00		

NOTES

--

Tract Number : 694

Description : S2-28;S2-29;SE30;NW;E2-32-131-64 #132, 133
FSA Physical Location : NORTH DAKOTA/DICKEY
ANSI Physical Location : NORTH DAKOTA/DICKEY
BIA Unit Range Number :
HEL Status : NHEL: No agricultural commodity planted on undetermined fields
Wetland Status : Tract contains a wetland or farmed wetland
WL Violations : None
Owners
Other Producers
Recon ID : None

Tract Land Data

Farm Land	Cropland	DCP Cropland	WBP	EWP	WRP	GRP	Sugarcane
1,262.90	710.17	710.17	0.00	0.00	0.00	0.00	0.0



Abbreviated 156 Farm Record

Tract 694 Continued ...

State Conservation	Other Conservation	Effective DCP Cropland	Double Cropped	CRP	MPL	DCP Ag. Rel Activity	SOD
0.00	0.00	710.17	0.00	0.00	0.00	0.00	0.00

DCP Crop Data

Crop Name	Base Acres	CCC-505 CRP Reduction Acres	PLC Yield
Wheat	40.56	0.00	36
Corn	112.95	0.00	91
Soybeans	178.69	0.00	30
TOTAL	332.20	0.00	

NOTES

--

In accordance with Federal civil rights law and U.S. Department of Agriculture (USDA) civil rights regulations and policies, the USDA, its Agencies, offices, and employees, and institutions participating in or administering USDA programs are prohibited from discriminating based on race, color, national origin, religion, sex, gender identity (including gender expression), sexual orientation, disability, age, marital status, family/parental status, income derived from a public assistance program, political beliefs, or reprisal or retaliation for prior civil rights activity, in any program or activity conducted or funded by USDA (not all bases apply to all programs). Remedies and complaint filing deadlines vary by program or incident.

Persons with disabilities who require alternative means of communication for program information (e.g., Braille, large print, audiotape, American Sign Language, etc.) should contact the responsible Agency or USDA's TARGET Center at (202) 720-2600 (voice and TTY) or contact USDA through the Federal Relay Service at (800) 877-8339. Additionally, program information may be made available in languages other than English.

To file a program discrimination complaint, complete the USDA Program Discrimination Complaint Form, AD-3027, found online at http://www.ascr.usda.gov/complaint_filing_cust.html and at any USDA office or write a letter addressed to USDA and provide in the letter all of the information requested in the form. To request a copy of the complaint form, call (866) 632-9992. Submit your completed form or letter to USDA by: (1) mail: U.S. Department of Agriculture Office of the Assistant Secretary for Civil Rights 1400 Independence Avenue, SW Washington, D.C. 20250-9410; (2) fax: (202) 690-7442; or (3) e-mail: program.intake@usda.gov. USDA is an equal opportunity provider, employer, and lender.



Abbreviated 156 Farm Record

Operator Name

CRP Contract Number(s)

Recon ID : None

Transferred From : None

ARCPLC G//F Eligibility : None

: Ineligible - Complete G//F History

Farm Land Data

Farmland	Cropland	DCP Cropland	WBP	EWP	WRP	GRP	Sugarcane	Farm Status	Number Of Tracts
159.36	34.62	34.62	0.00	0.00	0.00	0.00	0.0	Active	1
State Conservation	Other Conservation	Effective DCP Cropland		Double Cropped		CRP	MPL	DCP Ag.Rel. Activity	SOD
0.00	0.00	34.62		0.00		0.00	0.00	0.00	0.00

Crop Election Choice

ARC Individual	ARC County	Price Loss Coverage
None	None	None
ARC Individual - Default	ARC County - Default	Price Loss Coverage - Default
None	WHEAT, OATS, CORN, BARLY	None

DCP Crop Data

Crop Name	Base Acres	CCC-505 CRP Reduction Acres	PLC Yield	HIP
Wheat	5.30	0.00	21	
Oats	0.40	0.00	44	
Corn	5.10	0.00	52	
Barley	4.90	0.00	30	
TOTAL	15.70	0.00		

NOTES

Tract Number : 695

Description : SE35-131-64

FSA Physical Location : NORTH DAKOTA/DICKEY

ANSI Physical Location : NORTH DAKOTA/DICKEY

BIA Unit Range Number :

HEL Status : NHEL: No agricultural commodity planted on undetermined fields

Wetland Status : Tract contains a wetland or farmed wetland

WL Violations : None

Owners

Other Producers

Recon ID : None

Abbreviated 156 Farm Record

Tract Land Data

Tract 695 Continued ...

Farm Land	Cropland	DCP Cropland	WBP	EWP	WRP	GRP	Sugarcane
159.36	34.62	34.62	0.00	0.00	0.00	0.00	0.0
State Conservation	Other Conservation	Effective DCP Cropland	Double Cropped	CRP	MPL	DCP Ag. Rel Activity	SOD
0.00	0.00	34.62	0.00	0.00	0.00	0.00	0.00

DCP Crop Data

Crop Name	Base Acres	CCC-505 CRP Reduction Acres	PLC Yield
Wheat	5.30	0.00	21
Oats	0.40	0.00	44
Corn	5.10	0.00	52
Barley	4.90	0.00	30
TOTAL	15.70	0.00	

NOTES

--

In accordance with Federal civil rights law and U.S. Department of Agriculture (USDA) civil rights regulations and policies, the USDA, its Agencies, offices, and employees, and institutions participating in or administering USDA programs are prohibited from discriminating based on race, color, national origin, religion, sex, gender identity (including gender expression), sexual orientation, disability, age, marital status, family/parental status, income derived from a public assistance program, political beliefs, or reprisal or retaliation for prior civil rights activity, in any program or activity conducted or funded by USDA (not all bases apply to all programs). Remedies and complaint filing deadlines vary by program or incident.

Persons with disabilities who require alternative means of communication for program information (e.g., Braille, large print, audiotape, American Sign Language, etc.) should contact the responsible Agency or USDA's TARGET Center at (202) 720-2600 (voice and TTY) or contact USDA through the Federal Relay Service at (800) 877-8339. Additionally, program information may be made available in languages other than English.

To file a program discrimination complaint, complete the USDA Program Discrimination Complaint Form, AD-3027, found online at http://www.ascr.usda.gov/complaint_filing_cust.html and at any USDA office or write a letter addressed to USDA and provide in the letter all of the information requested in the form. To request a copy of the complaint form, call (866) 632-9992. Submit your completed form or letter to USDA by: (1) mail: U.S. Department of Agriculture Office of the Assistant Secretary for Civil Rights 1400 Independence Avenue, SW Washington, D.C. 20250-9410; (2) fax: (202) 690-7442; or (3) e-mail: program.intake@usda.gov. USDA is an equal opportunity provider, employer, and lender.