



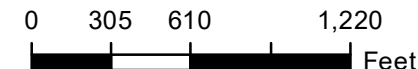
Farm 6275

S18 T155N R61W

Phy Cnty: Ramsey

2024 Program Year

Map Created March 27, 2024



Unless Otherwise Noted:

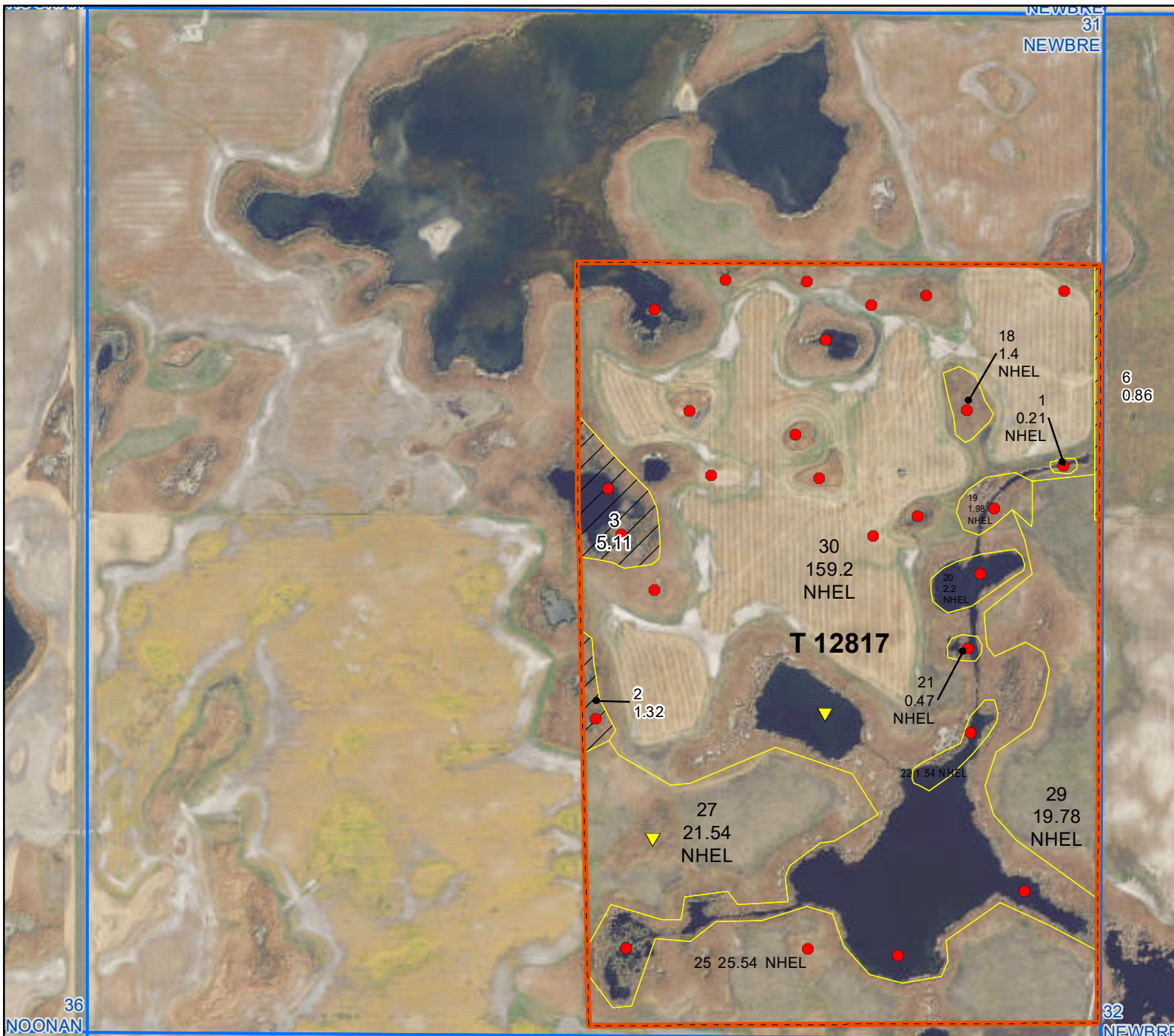
- Barley = Spring for Grain
- Canola = Spring for Processing
- Corn = Yellow for Grain
- Flax = Common for Grain
- Oats = Spring for Grain
- Soybeans = Common for Grain
- Sunflowers = Oil for Grain
- Wheat = Spring for Grain
- All fields are non-irrigated
- Shares are 100% to operator

Common Land Unit

- Tract Boundary
- Non-Cropland
- Cropland
- PLSS

Wetland Determination Identifiers

- Restricted Use
- Limited Restrictions
- Exempt from Conservation
- Compliance Provisions



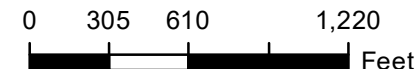
Farm 6276

S31 T155N R61W

Phy Cnty: Ramsey

2024 Program Year

Map Created March 27, 2024



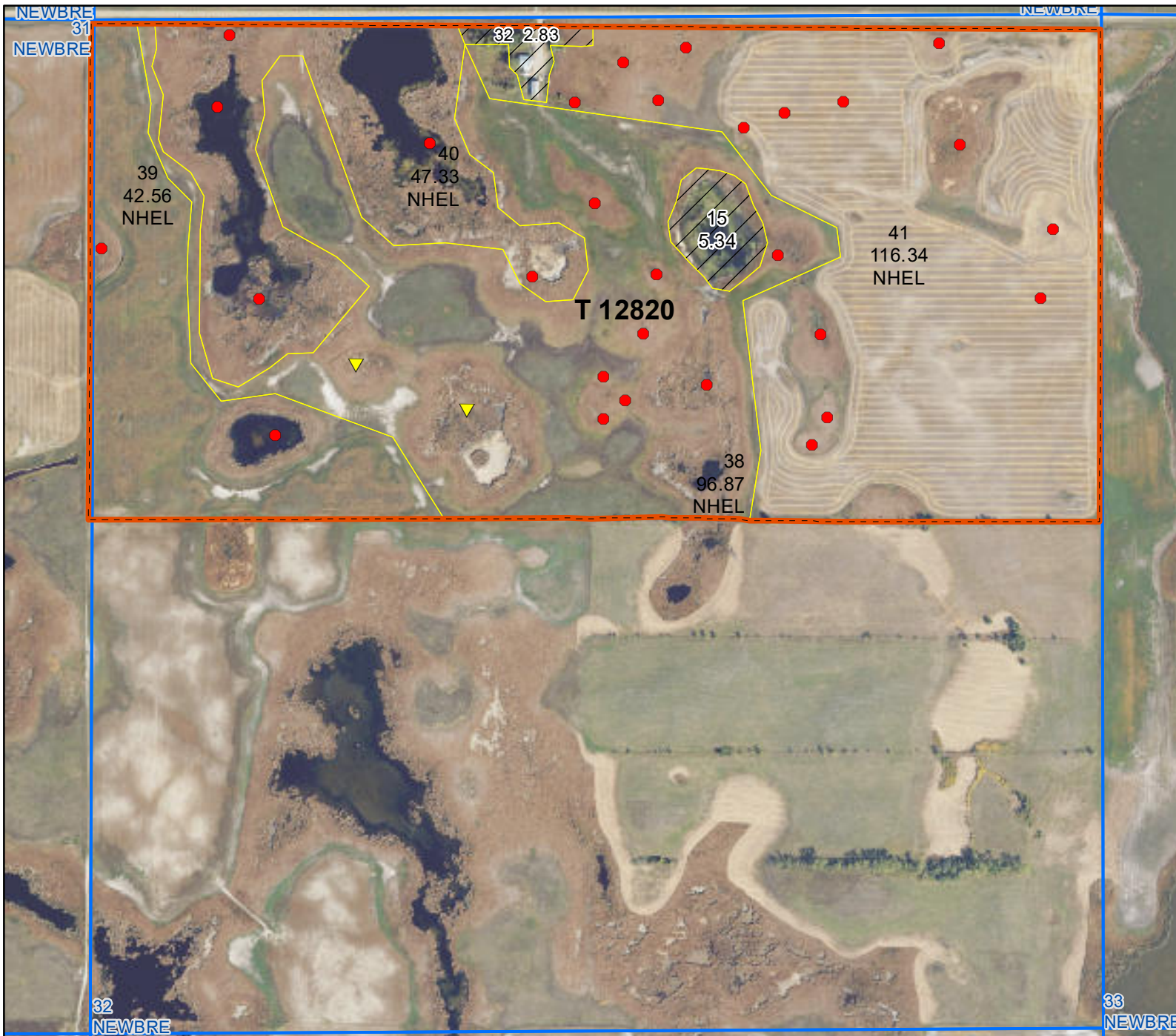
- Unless Otherwise Noted:**
- Barley = Spring for Grain
 - Canola = Spring for Processing
 - Corn = Yellow for Grain
 - Flax = Common for Grain
 - Oats = Spring for Grain
 - Soybeans = Common for Grain
 - Sunflowers = Oil for Grain
 - Wheat = Spring for Grain
 - All fields are non-irrigated
 - Shares are 100% to operator

Common Land Unit

- Tract Boundary
- Non-Cropland
- Cropland
- PLSS

Wetland Determination Identifiers

- Restricted Use
- Limited Restrictions
- Exempt from Conservation
- Compliance Provisions



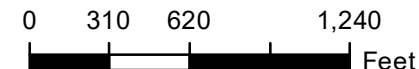
Farm 6275

S32 T155N R61W

Phy Cnty: Ramsey

2024 Program Year

Map Created March 27, 2024



Unless Otherwise Noted:

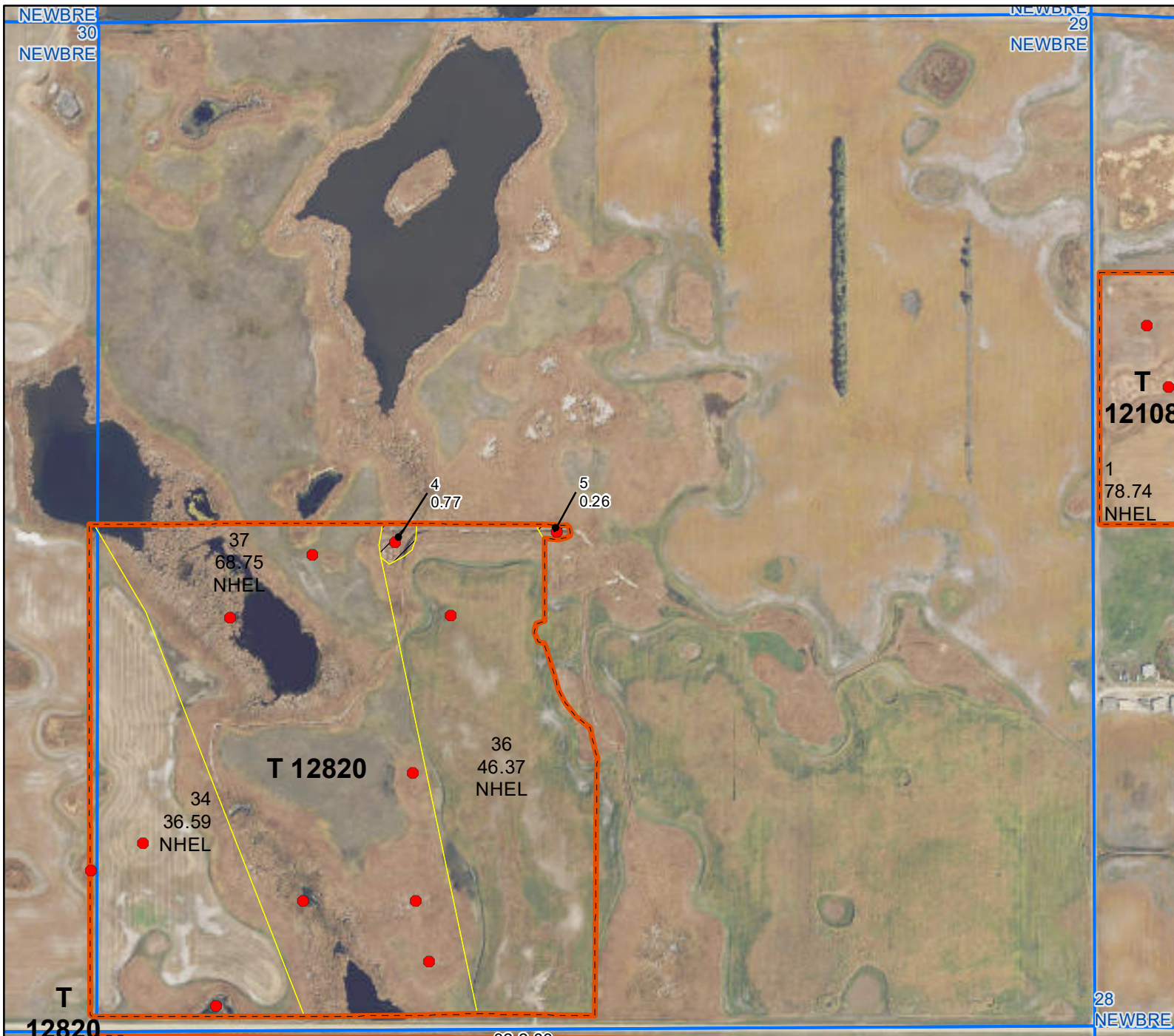
- Barley = Spring for Grain
- Canola = Spring for Processing
- Corn = Yellow for Grain
- Flax = Common for Grain
- Oats = Spring for Grain
- Soybeans = Common for Grain
- Sunflowers = Oil for Grain
- Wheat = Spring for Grain
- All fields are non-irrigated
- Shares are 100% to operator

Common Land Unit

- Tract Boundary
- Non-Cropland
- Cropland
- PLSS

Wetland Determination Identifiers

- Restricted Use
- Limited Restrictions
- Exempt from Conservation
- Compliance Provisions



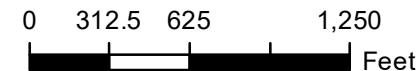
Farm 6275

S29 T155N R61W

Phy Cnty: Ramsey

2024 Program Year

Map Created March 27, 2024



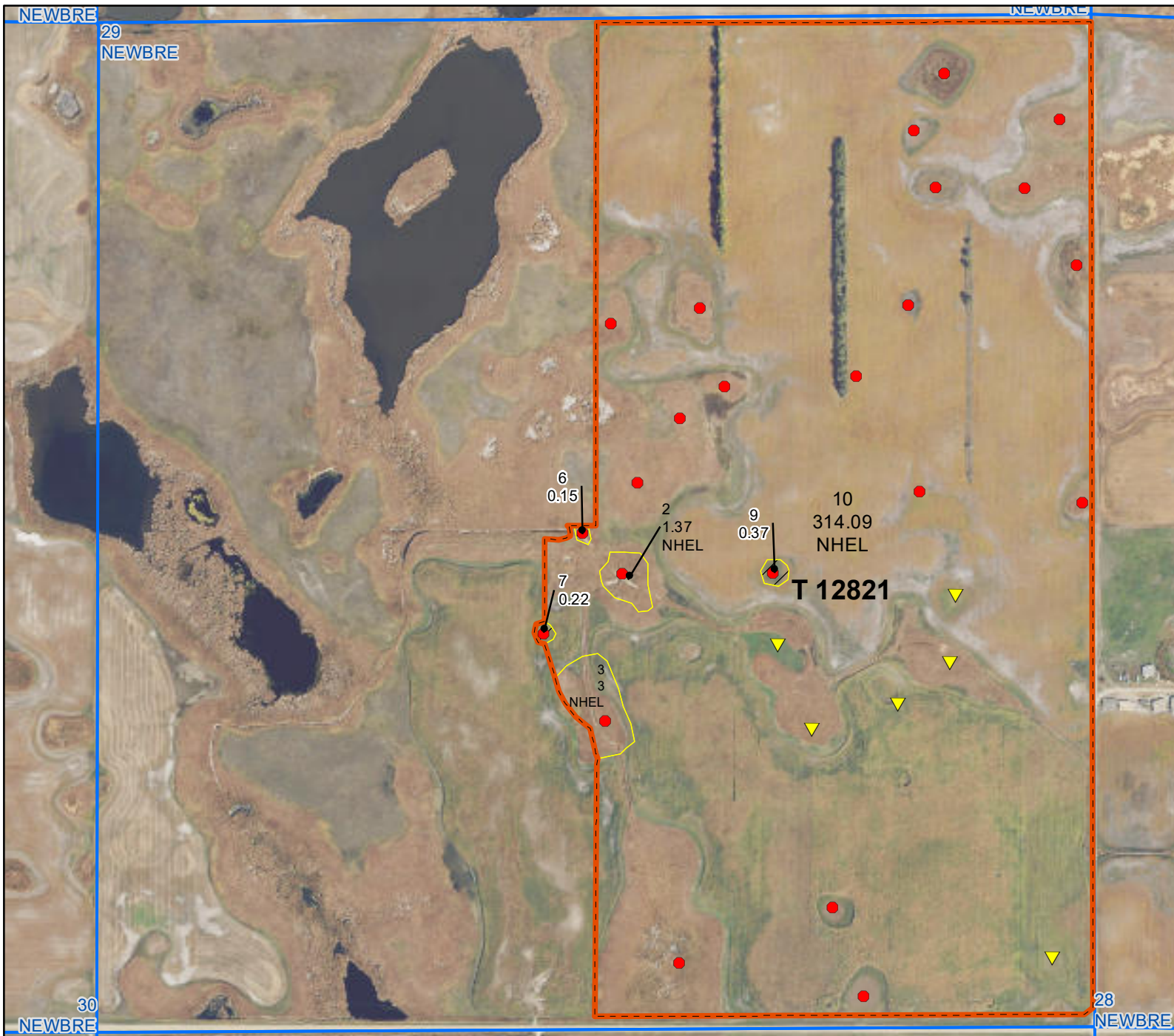
- Unless Otherwise Noted:**
- Barley = Spring for Grain
 - Canola = Spring for Processing
 - Corn = Yellow for Grain
 - Flax = Common for Grain
 - Oats = Spring for Grain
 - Soybeans = Common for Grain
 - Sunflowers = Oil for Grain
 - Wheat = Spring for Grain
 - All fields are non-irrigated
 - Shares are 100% to operator

Common Land Unit

- Tract Boundary
- Non-Cropland
- Cropland
- PLSS

Wetland Determination Identifiers

- Restricted Use
- Limited Restrictions
- Exempt from Conservation
- Compliance Provisions



Farm 6276

S29 T155N R61W

Phy Cnty: Ramsey

2024 Program Year

Map Created March 27, 2024



- Unless Otherwise Noted:**
- Barley = Spring for Grain
 - Canola = Spring for Processing
 - Corn = Yellow for Grain
 - Flax = Common for Grain
 - Oats = Spring for Grain
 - Soybeans = Common for Grain
 - Sunflowers = Oil for Grain
 - Wheat = Spring for Grain
 - All fields are non-irrigated
 - Shares are 100% to operator

Common Land Unit

- Tract Boundary
- Non-Cropland
- Cropland
- PLSS

Wetland Determination Identifiers

- Restricted Use
- Limited Restrictions
- Exempt from Conservation
- Compliance Provisions



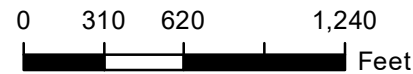
Farm 6275

S28 T155N R61W

Phy Cnty: Ramsey

2024 Program Year

Map Created March 27, 2024



- Unless Otherwise Noted:**
- Barley = Spring for Grain
 - Canola = Spring for Processing
 - Corn = Yellow for Grain
 - Flax = Common for Grain
 - Oats = Spring for Grain
 - Soybeans = Common for Grain
 - Sunflowers = Oil for Grain
 - Wheat = Spring for Grain
 - All fields are non-irrigated
 - Shares are 100% to operator

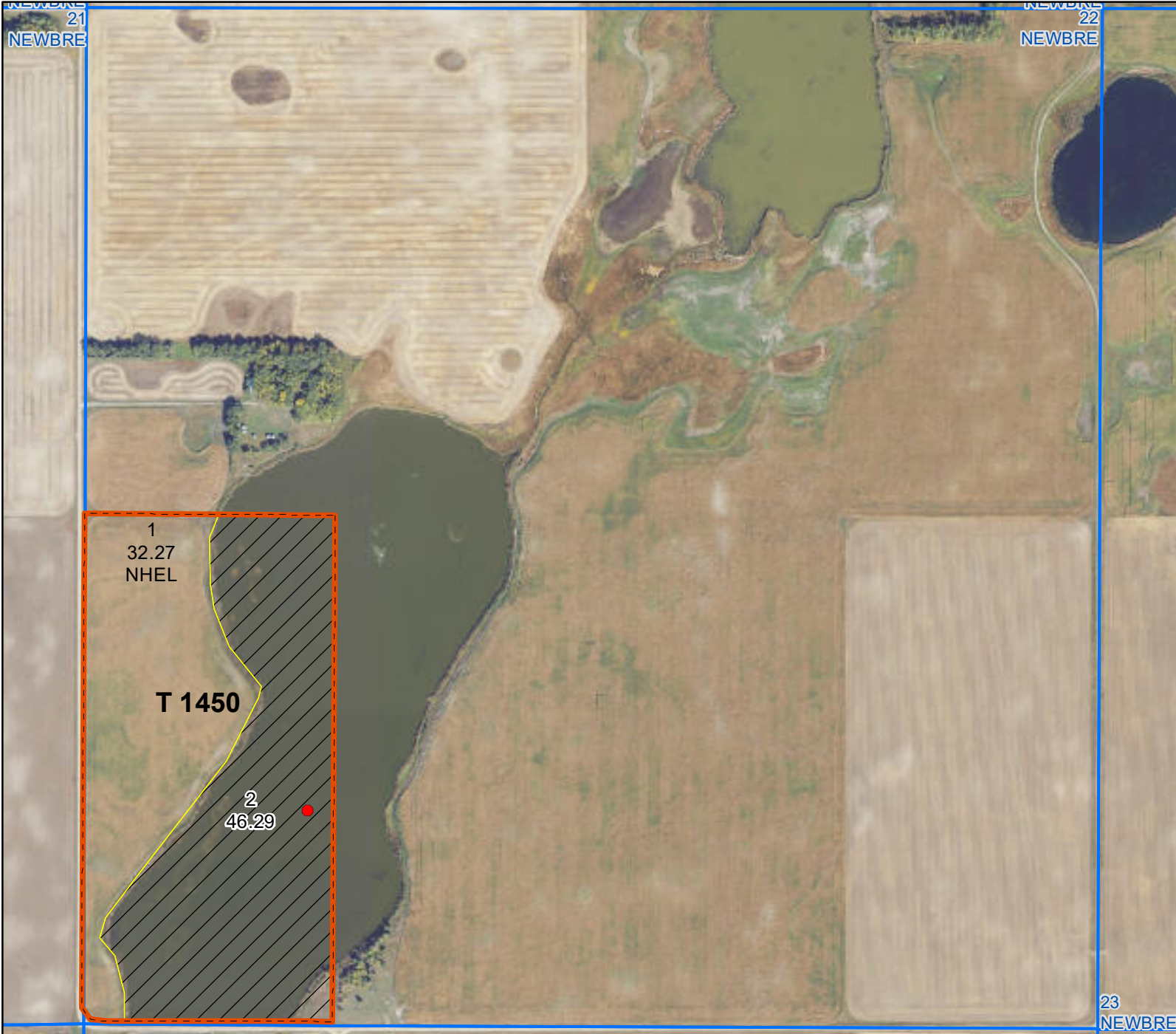
Common Land Unit

- Tract Boundary
- Non-Cropland
- Cropland
- PLSS

Wetland Determination Identifiers

- Restricted Use
- Limited Restrictions
- Exempt from Conservation
- Compliance Provisions

United States Department of Agriculture (USDA) Farm Service Agency (FSA) maps are for FSA Program administration only. This map does not represent a legal survey or reflect actual ownership; rather it depicts the information provided directly from the producer and/or National Agricultural Imagery Program (NAIP) imagery. The producer accepts the data 'as is' and assumes all risks associated with its use. USDA-FSA assumes no responsibility for actual or consequential damage incurred as a result of any user's reliance on this data outside FSA Programs. Wetland identifiers do not represent the size, shape, or specific determination of the area. Refer to your original determination (CPA-026 and attached maps) for exact boundaries and determinations or contact USDA Natural Resources Conservation Service (NRCS). **The imagery displayed on this map was collected in calendar year 2023.**



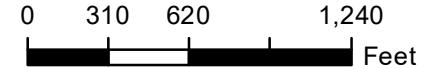
Farm 6275

S22 T155N R61W

Phy Cnty: Ramsey

2024 Program Year

Map Created March 27, 2024



Unless Otherwise Noted:

- Barley = Spring for Grain
- Canola = Spring for Processing
- Corn = Yellow for Grain
- Flax = Common for Grain
- Oats = Spring for Grain
- Soybeans = Common for Grain
- Sunflowers = Oil for Grain
- Wheat = Spring for Grain
- All fields are non-irrigated
- Shares are 100% to operator

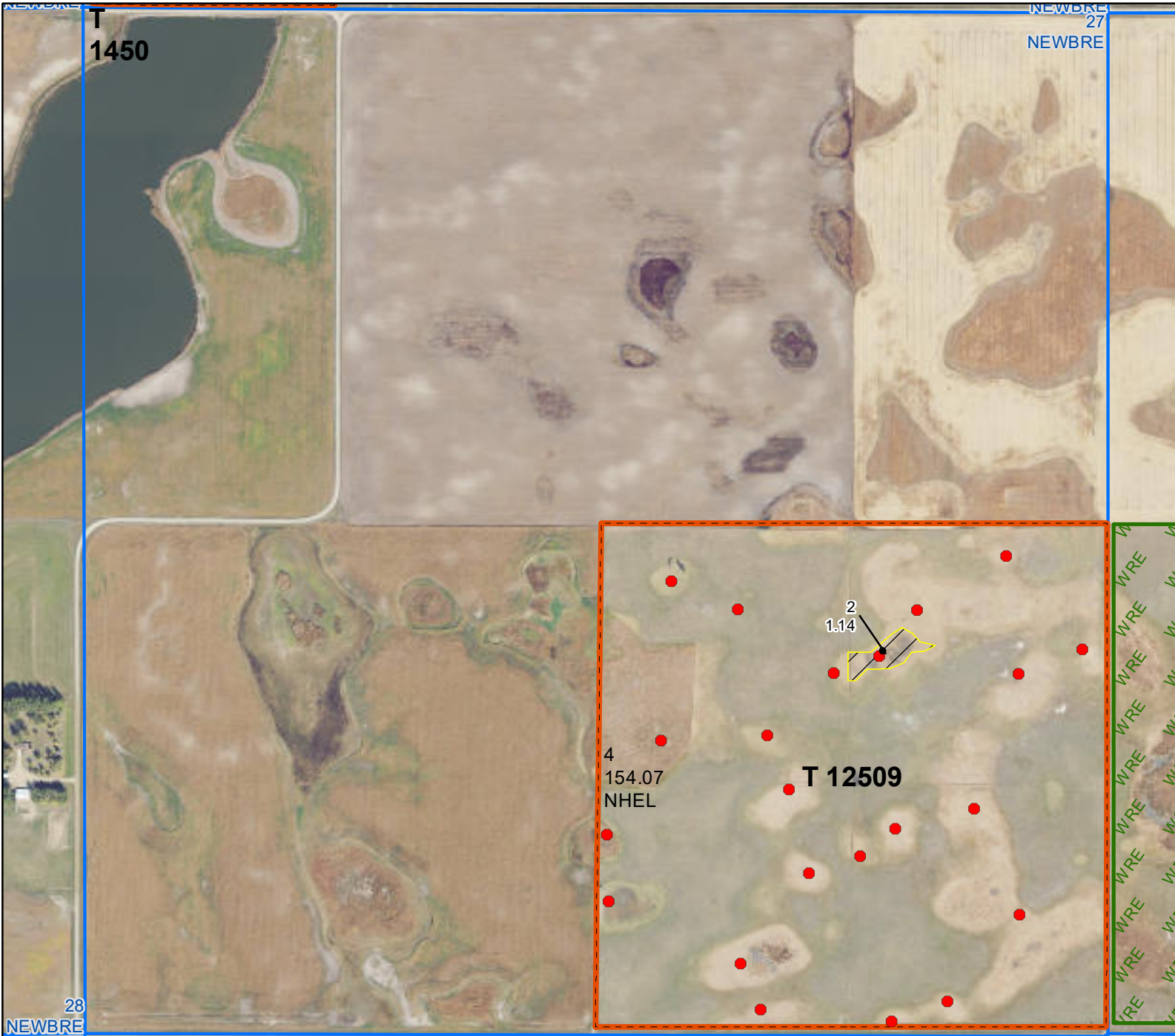
Common Land Unit

- Tract Boundary
- Non-Cropland
- Cropland
- PLSS

Wetland Determination Identifiers

- Restricted Use
- Limited Restrictions
- Exempt from Conservation
- Compliance Provisions

United States Department of Agriculture (USDA) Farm Service Agency (FSA) maps are for FSA Program administration only. This map does not represent a legal survey or reflect actual ownership; rather it depicts the information provided directly from the producer and/or National Agricultural Imagery Program (NAIP) imagery. The producer accepts the data 'as is' and assumes all risks associated with its use. USDA-FSA assumes no responsibility for actual or consequential damage incurred as a result of any user's reliance on this data outside FSA Programs. Wetland identifiers do not represent the size, shape, or specific determination of the area. Refer to your original determination (CPA-026 and attached maps) for exact boundaries and determinations or contact USDA Natural Resources Conservation Service (NRCS). **The imagery displayed on this map was collected in calendar year 2023.**



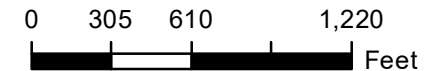
Farm 6275

S27 T155N R61W

Phy Cnty: Ramsey

2024 Program Year

Map Created March 27, 2024



- Unless Otherwise Noted:**
- Barley = Spring for Grain
 - Canola = Spring for Processing
 - Corn = Yellow for Grain
 - Flax = Common for Grain
 - Oats = Spring for Grain
 - Soybeans = Common for Grain
 - Sunflowers = Oil for Grain
 - Wheat = Spring for Grain
 - All fields are non-irrigated
 - Shares are 100% to operator

Common Land Unit Program

- WRE
- Tract Boundary
- Non-Cropland
- Cropland
- PLSS

Wetland Determination Identifiers

- Restricted Use
- Limited Restrictions
- Exempt from Conservation
- Compliance Provisions



Abbreviated 156 Farm Record

Operator Name

CRP Contract Number(s) : None

Recon ID : 38-071-2018-69

Transferred From : None

ARCPLC G//F Eligibility : Eligible

Farm Land Data

| Farmland | Cropland | DCP Cropland | WBP | EWP | WRP | GRP | Sugarcane | Farm Status | Number Of Tracts |
|--------------------|--------------------|------------------------|-------|----------------|------|------|-----------|----------------------|------------------|
| 932.31 | 859.92 | 859.92 | 68.75 | 0.00 | 0.00 | 0.00 | 0.0 | Active | 5 |
| State Conservation | Other Conservation | Effective DCP Cropland | | Double Cropped | | CRP | MPL | DCP Ag.Rel. Activity | SOD |
| 0.00 | 0.00 | 791.17 | | 0.00 | | 0.00 | 0.00 | 0.00 | 0.00 |

Crop Election Choice

| ARC Individual | ARC County | Price Loss Coverage |
|----------------|--------------------|---------------------|
| None | CORN, SOYBN, CANOL | WHEAT |

DCP Crop Data

| Crop Name | Base Acres | CCC-505 CRP Reduction Acres | PLC Yield | HIP |
|--------------|---------------|-----------------------------|-----------|-----|
| Wheat | 91.87 | 0.00 | 45 | |
| Corn | 140.35 | 0.00 | 108 | |
| Soybeans | 68.09 | 0.00 | 29 | |
| Canola | 120.87 | 0.00 | 1800 | |
| TOTAL | 421.18 | 0.00 | | |

NOTES

| |
|--|
| |
|--|

Tract Number : 1450

Description : WSW22-155-61

FSA Physical Location : NORTH DAKOTA/RAMSEY

ANSI Physical Location : NORTH DAKOTA/RAMSEY

BIA Unit Range Number :

HEL Status : NHEL: No agricultural commodity planted on undetermined fields

Wetland Status : Tract does not contain a wetland

WL Violations : None

Owners : MARY JANE EIDSNESS

Other Producers : None

Recon ID : None

Tract Land Data

| Farm Land | Cropland | DCP Cropland | WBP | EWP | WRP | GRP | Sugarcane |
|-----------|----------|--------------|------|------|------|------|-----------|
| 78.56 | 32.27 | 32.27 | 0.00 | 0.00 | 0.00 | 0.00 | 0.0 |

Abbreviated 156 Farm Record

Tract 1450 Continued ...

| State Conservation | Other Conservation | Effective DCP Cropland | Double Cropped | CRP | MPL | DCP Ag. Rel Activity | SOD |
|--------------------|--------------------|------------------------|----------------|------|------|----------------------|------|
| 0.00 | 0.00 | 32.27 | 0.00 | 0.00 | 0.00 | 0.00 | 0.00 |

DCP Crop Data

| Crop Name | Base Acres | CCC-505 CRP Reduction Acres | PLC Yield |
|--------------|--------------|-----------------------------|-----------|
| Wheat | 6.56 | 0.00 | 45 |
| Corn | 10.95 | 0.00 | 108 |
| Soybeans | 3.56 | 0.00 | 29 |
| Canola | 9.13 | 0.00 | 1800 |
| TOTAL | 30.20 | 0.00 | |

NOTES

Tract Number : 11753

Description : SE18-155-61
FSA Physical Location : NORTH DAKOTA/RAMSEY
ANSI Physical Location : NORTH DAKOTA/RAMSEY
BIA Unit Range Number :
HEL Status : NHEL: No agricultural commodity planted on undetermined fields
Wetland Status : Tract contains a wetland or farmed wetland
WL Violations : None
Owners : MARY JANE EIDSNESS
Other Producers : None
Recon ID : None

Tract Land Data

| Farm Land | Cropland | DCP Cropland | WBP | EWP | WRP | GRP | Sugarcane |
|--------------------|--------------------|------------------------|----------------|------|------|----------------------|-----------|
| 153.73 | 140.03 | 140.03 | 0.00 | 0.00 | 0.00 | 0.00 | 0.0 |
| State Conservation | Other Conservation | Effective DCP Cropland | Double Cropped | CRP | MPL | DCP Ag. Rel Activity | SOD |
| 0.00 | 0.00 | 140.03 | 0.00 | 0.00 | 0.00 | 0.00 | 0.00 |

DCP Crop Data

| Crop Name | Base Acres | CCC-505 CRP Reduction Acres | PLC Yield |
|--------------|---------------|-----------------------------|-----------|
| Wheat | 28.46 | 0.00 | 45 |
| Corn | 47.50 | 0.00 | 108 |
| Soybeans | 15.45 | 0.00 | 29 |
| Canola | 39.62 | 0.00 | 1800 |
| TOTAL | 131.03 | 0.00 | |

Abbreviated 156 Farm Record

Tract 11753 Continued ...

NOTES

Tract Number : 12108

Description : SNW28-155-61
FSA Physical Location : NORTH DAKOTA/RAMSEY
ANSI Physical Location : NORTH DAKOTA/RAMSEY
BIA Unit Range Number :
HEL Status : HEL determinations not completed for all fields on the tract
Wetland Status : Tract contains a wetland or farmed wetland
WL Violations : None
Owners : MARY JANE EIDSNESS
Other Producers : None
Recon ID : 38-071-2009-89

Tract Land Data

| Farm Land | Cropland | DCP Cropland | WBP | EWP | WRP | GRP | Sugarcane |
|--------------------|--------------------|------------------------|----------------|------|------|----------------------|-----------|
| 80.80 | 78.74 | 78.74 | 0.00 | 0.00 | 0.00 | 0.00 | 0.0 |
| State Conservation | Other Conservation | Effective DCP Cropland | Double Cropped | CRP | MPL | DCP Ag. Rel Activity | SOD |
| 0.00 | 0.00 | 78.74 | 0.00 | 0.00 | 0.00 | 0.00 | 0.00 |

DCP Crop Data

| Crop Name | Base Acres | CCC-505 CRP Reduction Acres | PLC Yield |
|--------------|--------------|-----------------------------|-----------|
| Wheat | 16.01 | 0.00 | 45 |
| Corn | 26.72 | 0.00 | 108 |
| Soybeans | 8.69 | 0.00 | 29 |
| Canola | 22.29 | 0.00 | 1800 |
| TOTAL | 73.71 | 0.00 | |

NOTES

Tract Number : 12509

Description : SE27-155-61
FSA Physical Location : NORTH DAKOTA/RAMSEY
ANSI Physical Location : NORTH DAKOTA/RAMSEY
BIA Unit Range Number :
HEL Status : NHEL: No agricultural commodity planted on undetermined fields
Wetland Status : Tract contains a wetland or farmed wetland
WL Violations : None
Owners : MARY JANE EIDSNESS

Abbreviated 156 Farm Record

Tract 12509 Continued ...

Other Producers : None
Recon ID : None

Tract Land Data

| Farm Land | Cropland | DCP Cropland | WBP | EWP | WRP | GRP | Sugarcane |
|--------------------|--------------------|------------------------|----------------|------|------|----------------------|-----------|
| 155.21 | 154.07 | 154.07 | 0.00 | 0.00 | 0.00 | 0.00 | 0.0 |
| State Conservation | Other Conservation | Effective DCP Cropland | Double Cropped | CRP | MPL | DCP Ag. Rel Activity | SOD |
| 0.00 | 0.00 | 154.07 | 0.00 | 0.00 | 0.00 | 0.00 | 0.00 |

DCP Crop Data

| Crop Name | Base Acres | CCC-505 CRP Reduction Acres | PLC Yield |
|--------------|--------------|-----------------------------|-----------|
| Wheat | 4.13 | 0.00 | 45 |
| Corn | 2.21 | 0.00 | 108 |
| Soybeans | 8.81 | 0.00 | 29 |
| Canola | 3.21 | 0.00 | 1800 |
| TOTAL | 18.36 | 0.00 | |

NOTES

| |
|--|
| |
|--|

Tract Number : 12820

Description : N32-SW29-155-61
FSA Physical Location : NORTH DAKOTA/RAMSEY
ANSI Physical Location : NORTH DAKOTA/RAMSEY
BIA Unit Range Number :
HEL Status : NHEL: No agricultural commodity planted on undetermined fields
Wetland Status : Tract contains a wetland or farmed wetland
WL Violations : Wetland converted between December 23, 1985 and November 28, 1990
Owners : MARY JANE EIDSNESS
Other Producers : None
Recon ID : 38-071-2018-71

Tract Land Data

| Farm Land | Cropland | DCP Cropland | WBP | EWP | WRP | GRP | Sugarcane |
|--------------------|--------------------|------------------------|----------------|------|------|----------------------|-----------|
| 464.01 | 454.81 | 454.81 | 68.75 | 0.00 | 0.00 | 0.00 | 0.0 |
| State Conservation | Other Conservation | Effective DCP Cropland | Double Cropped | CRP | MPL | DCP Ag. Rel Activity | SOD |
| 0.00 | 0.00 | 386.06 | 0.00 | 0.00 | 0.00 | 0.00 | 0.00 |

DCP Crop Data

| Crop Name | Base Acres | CCC-505 CRP Reduction Acres | PLC Yield |
|-----------|------------|-----------------------------|-----------|
| | | | |



Abbreviated 156 Farm Record

Tract 12820 Continued ...

| | | | |
|--------------|---------------|-------------|------|
| Wheat | 36.71 | 0.00 | 45 |
| Corn | 52.97 | 0.00 | 108 |
| Soybeans | 31.58 | 0.00 | 29 |
| Canola | 46.62 | 0.00 | 1800 |
| TOTAL | 167.88 | 0.00 | |

NOTES

In accordance with Federal civil rights law and U.S. Department of Agriculture (USDA) civil rights regulations and policies, the USDA, its Agencies, offices, and employees, and institutions participating in or administering USDA programs are prohibited from discriminating based on race, color, national origin, religion, sex, gender identity (including gender expression), sexual orientation, disability, age, marital status, family/parental status, income derived from a public assistance program, political beliefs, or reprisal or retaliation for prior civil rights activity, in any program or activity conducted or funded by USDA (not all bases apply to all programs). Remedies and complaint filing deadlines vary by program or incident.

Persons with disabilities who require alternative means of communication for program information (e.g., Braille, large print, audiotape, American Sign Language, etc.) should contact the responsible Agency or USDA's TARGET Center at (202) 720-2600 (voice and TTY) or contact USDA through the Federal Relay Service at (800) 877-8339. Additionally, program information may be made available in languages other than English.

To file a program discrimination complaint, complete the USDA Program Discrimination Complaint Form, AD-3027, found online at http://www.ascr.usda.gov/complaint_filing_cust.html and at any USDA office or write a letter addressed to USDA and provide in the letter all of the information requested in the form. To request a copy of the complaint form, call (866) 632-9992. Submit your completed form or letter to USDA by: (1) mail: U.S. Department of Agriculture Office of the Assistant Secretary for Civil Rights 1400 Independence Avenue, SW Washington, D.C. 20250-9410; (2) fax: (202) 690-7442; or (3) e-mail: program.intake@usda.gov. USDA is an equal opportunity provider, employer, and lender.



Abbreviated 156 Farm Record

Operator Name

CRP Contract Number(s) : None

Recon ID : 38-071-2018-70

Transferred From : None

ARCPLC G//F Eligibility : Eligible

Farm Land Data

| Farmland | Cropland | DCP Cropland | WBP | EWP | WRP | GRP | Sugarcane | Farm Status | Number Of Tracts |
|--------------------|--------------------|------------------------|----------------|------|------|------|----------------------|-------------|------------------|
| 560.35 | 552.32 | 552.32 | 0.00 | 0.00 | 0.00 | 0.00 | 0.0 | Active | 2 |
| State Conservation | Other Conservation | Effective DCP Cropland | Double Cropped | | CRP | MPL | DCP Ag.Rel. Activity | SOD | |
| 0.00 | 0.00 | 552.32 | 0.00 | | 0.00 | 0.00 | 0.00 | 0.00 | |

Crop Election Choice

| ARC Individual | ARC County | Price Loss Coverage |
|----------------|--------------------|---------------------|
| None | CORN, SOYBN, CANOL | WHEAT |

DCP Crop Data

| Crop Name | Base Acres | CCC-505 CRP Reduction Acres | PLC Yield | HIP |
|--------------|---------------|-----------------------------|-----------|-----|
| Wheat | 70.21 | 0.00 | 45 | |
| Corn | 110.95 | 0.00 | 89 | |
| Soybeans | 46.87 | 0.00 | 38 | |
| Canola | 94.39 | 0.00 | 1791 | |
| TOTAL | 322.42 | 0.00 | | |

NOTES

| |
|--|
| |
|--|

Tract Number : 12817

Description : SE-SNE31-155-61

FSA Physical Location : NORTH DAKOTA/RAMSEY

ANSI Physical Location : NORTH DAKOTA/RAMSEY

BIA Unit Range Number :

HEL Status : NHEL: No agricultural commodity planted on undetermined fields

Wetland Status : Tract contains a wetland or farmed wetland

WL Violations : Wetland converted between December 23, 1985 and November 28, 1990

Owners : MARY JANE EIDSNESS

Other Producers : None

Recon ID : 38-071-2018-64

Tract Land Data

| Farm Land | Cropland | DCP Cropland | WBP | EWP | WRP | GRP | Sugarcane |
|-----------|----------|--------------|------|------|------|------|-----------|
| 241.15 | 233.86 | 233.86 | 0.00 | 0.00 | 0.00 | 0.00 | 0.0 |

Abbreviated 156 Farm Record

Tract 12817 Continued ...

| State Conservation | Other Conservation | Effective DCP Cropland | Double Cropped | CRP | MPL | DCP Ag. Rel Activity | SOD |
|--------------------|--------------------|------------------------|----------------|------|------|----------------------|------|
| 0.00 | 0.00 | 233.86 | 0.00 | 0.00 | 0.00 | 0.00 | 0.00 |

DCP Crop Data

| Crop Name | Base Acres | CCC-505 CRP Reduction Acres | PLC Yield |
|--------------|--------------|-----------------------------|-----------|
| Wheat | 5.50 | 0.00 | 45 |
| Corn | 2.94 | 0.00 | 89 |
| Soybeans | 11.74 | 0.00 | 38 |
| Canola | 4.28 | 0.00 | 1791 |
| TOTAL | 24.46 | 0.00 | |

NOTES

| |
|--|
| |
|--|

Tract Number : 12821

Description : E29-155-61
FSA Physical Location : NORTH DAKOTA/RAMSEY
ANSI Physical Location : NORTH DAKOTA/RAMSEY
BIA Unit Range Number :
HEL Status : NHEL: No agricultural commodity planted on undetermined fields
Wetland Status : Tract contains a wetland or farmed wetland
WL Violations : Wetland converted between December 23, 1985 and November 28, 1990
Owners : MARY JANE EIDSNESS
Other Producers : None
Recon ID : 38-071-2018-72

Tract Land Data

| Farm Land | Cropland | DCP Cropland | WBP | EWP | WRP | GRP | Sugarcane |
|--------------------|--------------------|------------------------|----------------|------|------|----------------------|-----------|
| 319.20 | 318.46 | 318.46 | 0.00 | 0.00 | 0.00 | 0.00 | 0.0 |
| State Conservation | Other Conservation | Effective DCP Cropland | Double Cropped | CRP | MPL | DCP Ag. Rel Activity | SOD |
| 0.00 | 0.00 | 318.46 | 0.00 | 0.00 | 0.00 | 0.00 | 0.00 |

DCP Crop Data

| Crop Name | Base Acres | CCC-505 CRP Reduction Acres | PLC Yield |
|--------------|---------------|-----------------------------|-----------|
| Wheat | 64.71 | 0.00 | 45 |
| Corn | 108.01 | 0.00 | 89 |
| Soybeans | 35.13 | 0.00 | 38 |
| Canola | 90.11 | 0.00 | 1791 |
| TOTAL | 297.96 | 0.00 | |