



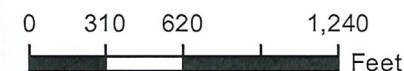
Farm 6357

S18 T152N R61W

Phy Cnty: Nelson

2024 Program Year

Map Created March 27, 2024



Unless Otherwise Noted:

- Barley = Spring for Grain
- Canola = Spring for Processing
- Corn = Yellow for Grain
- Flax = Common for Grain
- Oats = Spring for Grain
- Soybeans = Common for Grain
- Sunflowers = Oil for Grain
- Wheat = Spring for Grain
- All fields are non-irrigated
- Shares are 100% to operator

Common Land Unit

- Tract Boundary
- Cropland
- PLSS

Wetland Determination Identifiers

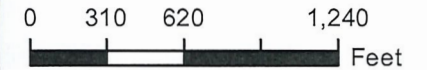
- Restricted Use
- ▼ Limited Restrictions
- Exempt from Conservation
- Compliance Provisions



Farm 6357

S19 T152N R61W
Phy Cnty: Nelson

2024 Program Year
Map Created March 27, 2024



Unless Otherwise Noted:
 Barley = Spring for Grain
 Canola = Spring for Processing
 Corn = Yellow for Grain
 Flax = Common for Grain
 Oats = Spring for Grain
 Soybeans = Common for Grain
 Sunflowers = Oil for Grain
 Wheat = Spring for Grain
 All fields are non-irrigated
 Shares are 100% to operator

Common Land Unit

- Tract Boundary
- Cropland
- PLSS

Wetland Determination Identifiers

- Restricted Use
- ▼ Limited Restrictions
- Exempt from Conservation
- Compliance Provisions

NORTH DAKOTA
RAMSEY



United States Department of Agriculture
Farm Service Agency

FARM : 6357

Prepared : 9/26/24 10:21 AM CST

Form: FSA-156EZ

Crop Year : 2024

See Page 2 for non-discriminatory Statements.

Abbreviated 156 Farm Record

Operator Name :
CRP Contract Number(s) : None
Recon ID : 38-071-2019-32
Transferred From : None
ARCPLC G//F Eligibility : Eligible

Farm Land Data

Farmland	Cropland	DCP Cropland	WBP	EWP	WRP	GRP	Sugarcane	Farm Status	Number Of Tracts
274.59	274.59	274.59	0.00	0.00	0.00	0.00	0.0	Active	1
State Conservation	Other Conservation	Effective DCP Cropland	Double Cropped		CRP	MPL	DCP Ag.Rel. Activity	SOD	
0.00	0.00	274.59	0.00		0.00	0.00	0.00	0.00	

Crop Election Choice

ARC Individual	ARC County	Price Loss Coverage
None	WHEAT, CORN, SOYBN	BARLY

DCP Crop Data

Crop Name	Base Acres	CCC-505 CRP Reduction Acres	PLC Yield	HIP
Wheat	101.03	0.00	51	
Corn	82.90	0.00	119	
Soybeans	76.06	0.00	39	
Barley	13.43	0.00	68	
TOTAL	273.42	0.00		

NOTES

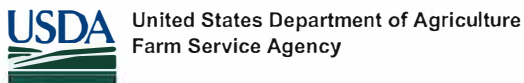
Tract Number : 2158

Description : SSW18-NW-NSW19-152-61
FSA Physical Location : NORTH DAKOTA/NELSON
ANSI Physical Location : NORTH DAKOTA/NELSON
BIA Unit Range Number :
HEL Status : HEL field on tract.Conservation system being actively applied
Wetland Status : Tract contains a wetland or farmed wetland
WL Violations : None
Owners :
Other Producers :
Recon ID :

Tract Land Data

Farm Land	Cropland	DCP Cropland	WBP	EWP	WRP	GRP	Sugarcane
274.59	274.59	274.59	0.00	0.00	0.00	0.00	0.0

NORTH DAKOTA
 RAMSEY
 Form: FSA-156EZ



FARM : 6357
 Prepared : 9/26/24 10:21 AM CST
 Crop Year : 2024

Abbreviated 156 Farm Record

Tract 2158 Continued ...

State Conservation	Other Conservation	Effective DCP Cropland	Double Cropped	CRP	MPL	DCP Ag. Rel Activity	SOD
0.00	0.00	274.59	0.00	0.00	0.00	0.00	0.00

DCP Crop Data

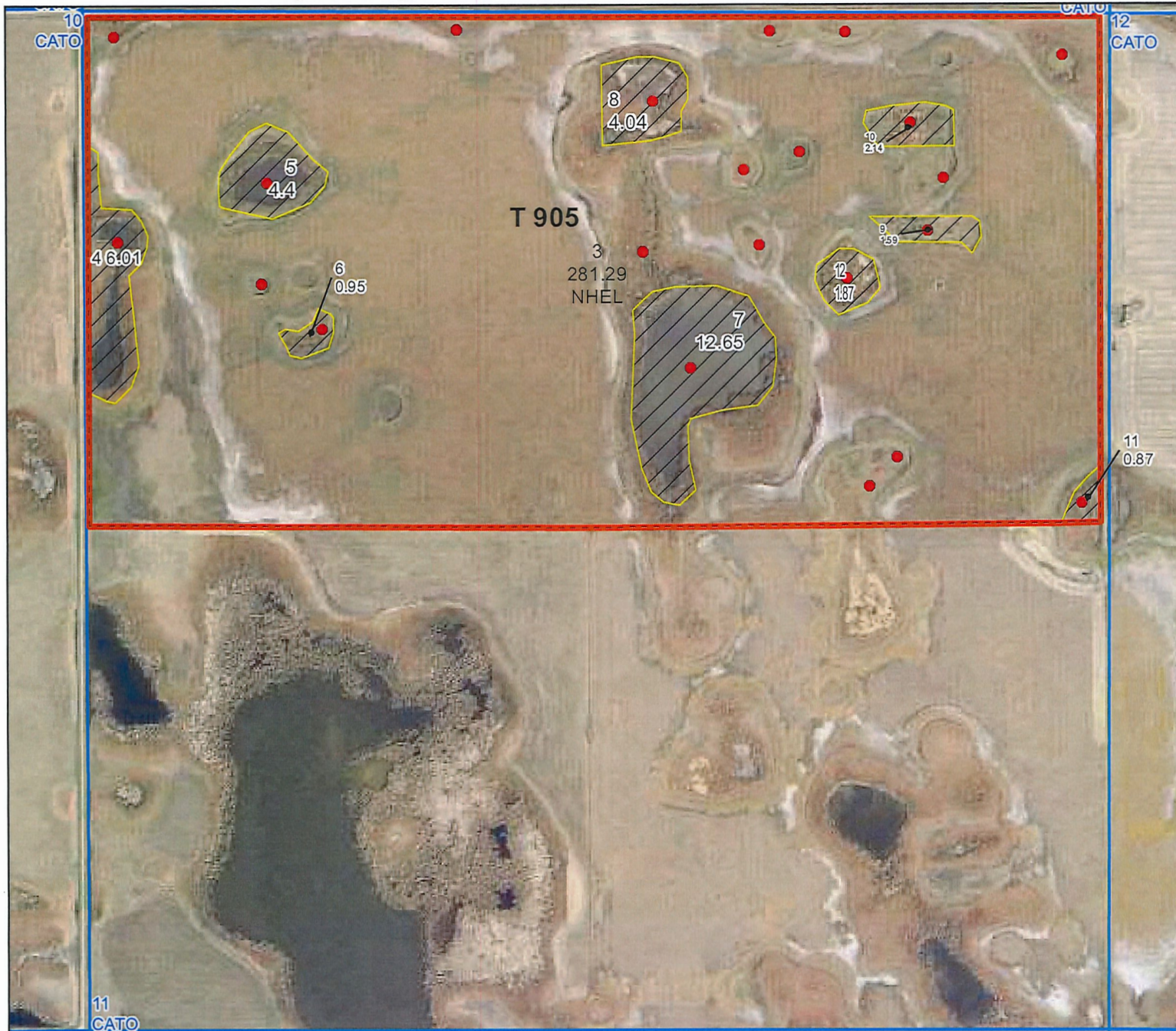
Crop Name	Base Acres	CCC-505 CRP Reduction Acres	PLC Yield
Wheat	101.03	0.00	51
Corn	82.90	0.00	119
Soybeans	76.06	0.00	39
Barley	13.43	0.00	68
TOTAL	273.42	0.00	

NOTES

In accordance with Federal civil rights law and U.S. Department of Agriculture (USDA) civil rights regulations and policies, the USDA, its Agencies, offices, and employees, and institutions participating in or administering USDA programs are prohibited from discriminating based on race, color, national origin, religion, sex, gender identity (including gender expression), sexual orientation, disability, age, marital status, family/parental status, income derived from a public assistance program, political beliefs, or reprisal or retaliation for prior civil rights activity, in any program or activity conducted or funded by USDA (not all bases apply to all programs). Remedies and complaint filing deadlines vary by program or incident.

Persons with disabilities who require alternative means of communication for program information (e.g., Braille, large print, audiotape, American Sign Language, etc.) should contact the responsible Agency or USDA's TARGET Center at (202) 720-2600 (voice and TTY) or contact USDA through the Federal Relay Service at (800) 877-8339. Additionally, program information may be made available in languages other than English.

To file a program discrimination complaint, complete the USDA Program Discrimination Complaint Form, AD-3027, found online at http://www.ascr.usda.gov/complaint_filing_cust.html and at any USDA office or write a letter addressed to USDA and provide in the letter all of the information requested in the form. To request a copy of the complaint form, call (866) 632-9992. Submit your completed form or letter to USDA by: (1) mail: U.S. Department of Agriculture Office of the Assistant Secretary for Civil Rights 1400 Independence Avenue, SW Washington, D.C. 20250-9410; (2) fax: (202) 690-7442; or (3) e-mail: program.intake@usda.gov. USDA is an equal opportunity provider, employer, and lender.



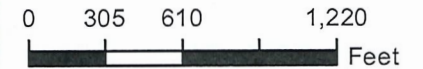
Farm 478

S11 T156N R62W

Phy Cnty: Ramsey

2024 Program Year

Map Created March 26, 2024



- Unless Otherwise Noted:**
- Barley = Spring for Grain
 - Canola = Spring for Processing
 - Corn = Yellow for Grain
 - Flax = Common for Grain
 - Oats = Spring for Grain
 - Soybeans = Common for Grain
 - Sunflowers = Oil for Grain
 - Wheat = Spring for Grain
 - All fields are non-irrigated
 - Shares are 100% to operator

Common Land Unit

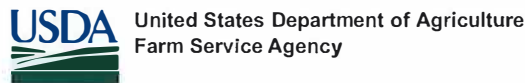
- Tract Boundary
- Non-Cropland
- Cropland
- PLSS

Wetland Determination Identifiers

- Restricted Use
- Limited Restrictions
- Exempt from Conservation
- Compliance Provisions

United States Department of Agriculture (USDA) Farm Service Agency (FSA) maps are for FSA Program administration only. This map does not represent a legal survey or reflect actual ownership; rather it depicts the information provided directly from the producer and/or National Agricultural Imagery Program (NAIP) imagery. The producer accepts the data 'as is' and assumes all risks associated with its use. USDA-FSA assumes no responsibility for actual or consequential damage incurred as a result of any user's reliance on this data outside FSA Programs. Wetland identifiers do not represent the size, shape, or specific determination of the area. Refer to your original determination (CPA-026 and attached maps) for exact boundaries and determinations or contact USDA Natural Resources Conservation Service (NRCS). The imagery displayed on this map was collected in calendar year 2023.

NORTH DAKOTA
RAMSEY



FARM : 478
Prepared : 9/26/24 8:00 AM CST
Crop Year : 2024

Form: FSA-156EZ

See Page 2 for non-discriminatory Statements.

Abbreviated 156 Farm Record

Operator Name :
CRP Contract Number(s) : None
Recon ID : None
Transferred From : None
ARCPLC G//F Eligibility : Eligible

Farm Land Data

Farmland	Cropland	DCP Cropland	WBP	EWP	WRP	GRP	Sugarcane	Farm Status	Number Of Tracts
315.81	281.29	281.29	0.00	0.00	0.00	0.00	0.0	Active	1
State Conservation	Other Conservation	Effective DCP Cropland	Double Cropped		CRP	MPL	DCP Ag.Rel. Activity	SOD	
0.00	0.00	281.29	0.00		0.00	0.00	0.00	0.00	

Crop Election Choice

ARC Individual	ARC County	Price Loss Coverage
None	WHEAT, SOYBN	None

DCP Crop Data

Crop Name	Base Acres	CCC-505 CRP Reduction Acres	PLC Yield	HIP
Wheat	146.30	0.00	48	
Soybeans	134.40	0.00	32	
TOTAL	280.70	0.00		

NOTES

--

Tract Number : 905

Description : N11-156-62
FSA Physical Location : NORTH DAKOTA/RAMSEY
ANSI Physical Location : NORTH DAKOTA/RAMSEY
BIA Unit Range Number :
HEL Status : NHEL: No agricultural commodity planted on undetermined fields
Wetland Status : Tract contains a wetland or farmed wetland
WL Violations : None
Owners :
Other Producers :
Recon ID : None

Tract Land Data

Farm Land	Cropland	DCP Cropland	WBP	EWP	WRP	GRP	Sugarcane
315.81	281.29	281.29	0.00	0.00	0.00	0.00	0.0

NORTH DAKOTA
 RAMSEY
 Form: FSA-156EZ



United States Department of Agriculture
 Farm Service Agency

FARM : 478

Prepared : 9/26/24 8:00 AM CST

Crop Year : 2024

Abbreviated 156 Farm Record

Tract 905 Continued ...

State Conservation	Other Conservation	Effective DCP Cropland	Double Cropped	CRP	MPL	DCP Ag. Rel Activity	SOD
0.00	0.00	281.29	0.00	0.00	0.00	0.00	0.00

DCP Crop Data

Crop Name	Base Acres	CCC-505 CRP Reduction Acres	PLC Yield
Wheat	146.30	0.00	48
Soybeans	134.40	0.00	32
TOTAL	280.70	0.00	

NOTES

--

In accordance with Federal civil rights law and U.S. Department of Agriculture (USDA) civil rights regulations and policies, the USDA, its Agencies, offices, and employees, and institutions participating in or administering USDA programs are prohibited from discriminating based on race, color, national origin, religion, sex, gender identity (including gender expression), sexual orientation, disability, age, marital status, family/parental status, income derived from a public assistance program, political beliefs, or reprisal or retaliation for prior civil rights activity, in any program or activity conducted or funded by USDA (not all bases apply to all programs). Remedies and complaint filing deadlines vary by program or incident.

Persons with disabilities who require alternative means of communication for program information (e.g., Braille, large print, audiotape, American Sign Language, etc.) should contact the responsible Agency or USDA's TARGET Center at (202) 720-2600 (voice and TTY) or contact USDA through the Federal Relay Service at (800) 877-8339. Additionally, program information may be made available in languages other than English.

To file a program discrimination complaint, complete the USDA Program Discrimination Complaint Form, AD-3027, found online at http://www.ascr.usda.gov/complaint_filing_cust.html and at any USDA office or write a letter addressed to USDA and provide in the letter all of the information requested in the form. To request a copy of the complaint form, call (866) 632-9992. Submit your completed form or letter to USDA by: (1) mail: U.S. Department of Agriculture Office of the Assistant Secretary for Civil Rights 1400 Independence Avenue, SW Washington, D.C. 20250-9410; (2) fax: (202) 690-7442; or (3) e-mail: program.intake@usda.gov. USDA is an equal opportunity provider, employer, and lender.



Common Land Unit

- CRP
- Non-Cropland
- Cropland
- Tract Boundary
- PLSS

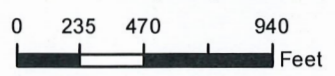
Wetland Determination Identifiers

- Restricted Use
- Limited Restrictions
- Exempt from Conservation
- Compliance Provisions

Unless Otherwise Noted:
 All crops are for grain
 All crops are non-irrigated
 Shares are 100% to Operator

2024 Program Year
 Map Created October 23, 2023

S7 T152N R58W
 Phy Cnty: Nelson



United States Department of Agriculture (USDA) Farm Service Agency (FSA) maps are for FSA Program administration only. This map does not represent a legal survey or reflect actual ownership; rather it depicts the information provided directly from the producer and/or National Agricultural Imagery Program (NAIP) imagery. The producer accepts the data 'as is' and assumes all risks associated with its use. USDA-FSA assumes no responsibility for actual or consequential damage incurred as a result of any user's reliance on this data outside FSA Programs. Wetland identifiers do not represent the size, shape, or specific determination of the area. Refer to your original determination (CPA-026 and attached maps) for exact boundaries and determinations or contact USDA Natural Resources Conservation Service (NRCS). The imagery displayed on this map was collected in calendar year 2022.

NORTH DAKOTA

NELSON

Form: FSA-156EZ

See Page 2 for non-discriminatory Statements.



United States Department of Agriculture
Farm Service Agency

Abbreviated 156 Farm Record

FARM : 5829

Prepared : 7/11/24 2:51 PM CST

Crop Year : 2024

Operator Name :
CRP Contract Number(s) : 11262, 11263, 11402
Recon ID : 38-063-2013-73
Transferred From : None
ARCPLC G//F Eligibility : Eligible

Farm Land Data

Farmland	Cropland	DCP Cropland	WBP	EWP	WRP	GRP	Sugarcane	Farm Status	Number Of Tracts
604.21	553.57	553.57	0.00	0.00	0.00	0.00	0.0	Active	1
State Conservation	Other Conservation	Effective DCP Cropland	Double Cropped		CRP	MPL	DCP Ag.Rel. Activity	SOD	
0.00	0.00	211.12	0.00		342.45	0.00	0.00	0.00	

Crop Election Choice

ARC Individual	ARC County	Price Loss Coverage
None	WHEAT, CORN, SOYBN, CANOL	None

DCP Crop Data

Crop Name	Base Acres	CCC-505 CRP Reduction Acres	PLC Yield	HIP
Wheat	58.15	51.87	29	
Corn	58.15	51.87	52	
Soybeans	42.21	37.65	22	
Canola	51.80	46.20	1190	
TOTAL	210.31	187.59		

NOTES

Empty box for notes.

Tract Number : 5309

Description : Sec. 7-152-58
FSA Physical Location : NORTH DAKOTA/NELSON
ANSI Physical Location : NORTH DAKOTA/NELSON
BIA Unit Range Number :
HEL Status : NHEL: No agricultural commodity planted on undetermined fields
Wetland Status : Tract contains a wetland or farmed wetland
WL Violations : None
Owners :
Other Producers : None
Recon ID : 38-063-2017-67

Tract Land Data

Farm Land	Cropland	DCP Cropland	WBP	EWP	WRP	GRP	Sugarcane
604.21	553.57	553.57	0.00	0.00	0.00	0.00	0.0

NORTH DAKOTA
NELSON
Form: FSA-156EZ



United States Department of Agriculture
Farm Service Agency

FARM : 5829

Prepared : 7/11/24 2:51 PM CST

Crop Year : 2024

Abbreviated 156 Farm Record

Tract 5309 Continued ...

State Conservation	Other Conservation	Effective DCP Cropland	Double Cropped	CRP	MPL	DCP Ag. Rel Activity	SOD
0.00	0.00	211.12	0.00	342.45	0.00	0.00	0.00

DCP Crop Data

Crop Name	Base Acres	CCC-505 CRP Reduction Acres	PLC Yield
Wheat	58.15	51.87	29
Corn	58.15	51.87	52
Soybeans	42.21	37.65	22
Canola	51.80	46.20	1190
TOTAL	210.31	187.59	

NOTES

--

In accordance with Federal civil rights law and U.S. Department of Agriculture (USDA) civil rights regulations and policies, the USDA, its Agencies, offices, and employees, and institutions participating in or administering USDA programs are prohibited from discriminating based on race, color, national origin, religion, sex, gender identity (including gender expression), sexual orientation, disability, age, marital status, family/parental status, income derived from a public assistance program, political beliefs, or reprisal or retaliation for prior civil rights activity, in any program or activity conducted or funded by USDA (not all bases apply to all programs). Remedies and complaint filing deadlines vary by program or incident.

Persons with disabilities who require alternative means of communication for program information (e.g., Braille, large print, audiotape, American Sign Language, etc.) should contact the responsible Agency or USDA's TARGET Center at (202) 720-2600 (voice and TTY) or contact USDA through the Federal Relay Service at (800) 877-8339. Additionally, program information may be made available in languages other than English.

To file a program discrimination complaint, complete the USDA Program Discrimination Complaint Form, AD-3027, found online at http://www.ascr.usda.gov/complaint_filing_cust.html and at any USDA office or write a letter addressed to USDA and provide in the letter all of the information requested in the form. To request a copy of the complaint form, call (866) 632-9992. Submit your completed form or letter to USDA by: (1) mail: U.S. Department of Agriculture Office of the Assistant Secretary for Civil Rights 1400 Independence Avenue, SW Washington, D.C. 20250-9410; (2) fax: (202) 690-7442; or (3) e-mail: program.intake@usda.gov. USDA is an equal opportunity provider, employer, and lender.