

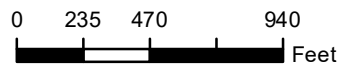
Common Land Unit
 Non-Cropland
 Cropland
 Tract Boundary
 PLSS

Wetland Determination Identifiers
 Restricted Use
 Limited Restrictions
 Exempt from Conservation Compliance Provisions

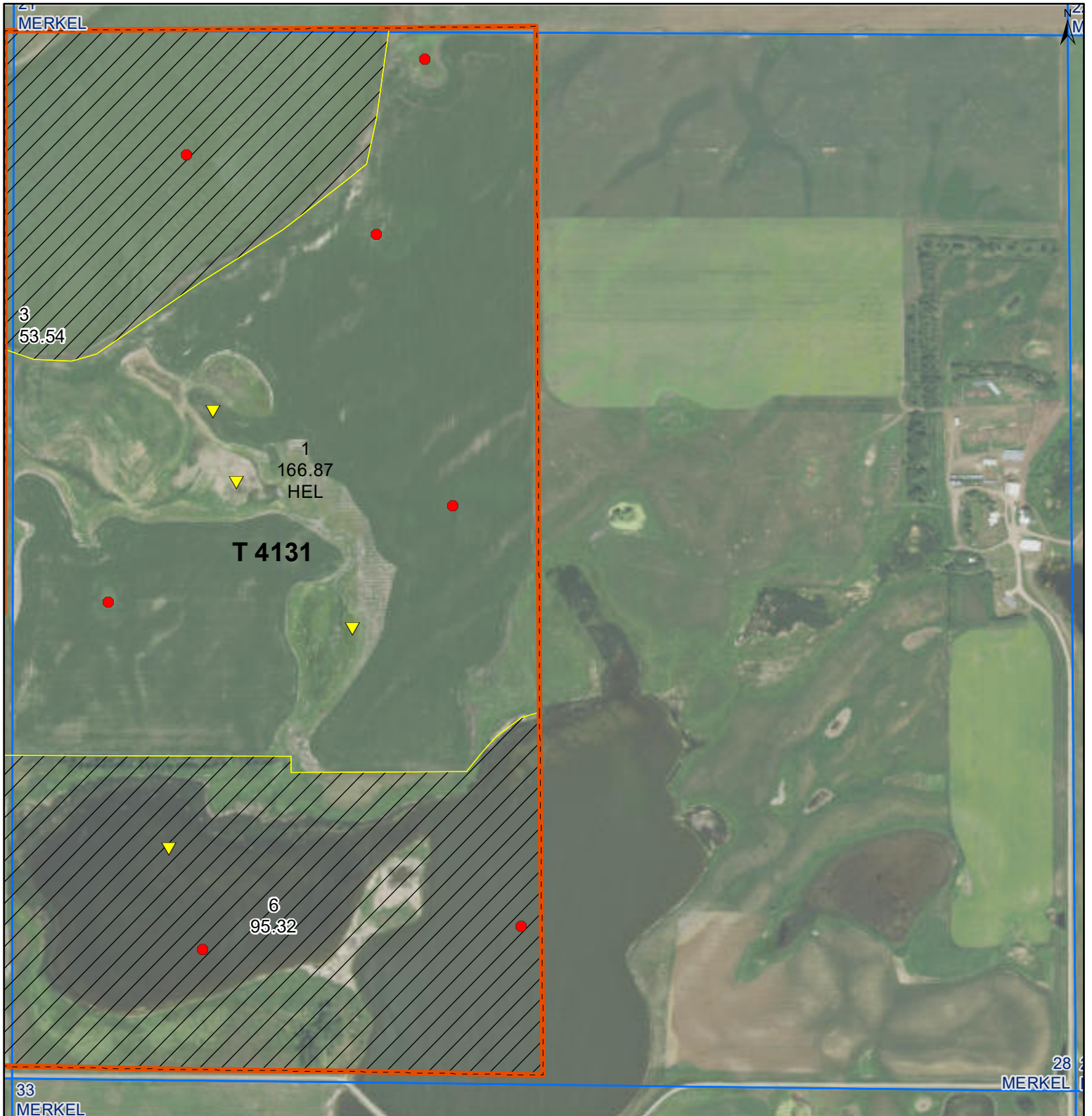
Unless Otherwise Noted:
 All crops are for grain
 All crops are non-irrigated
 Shares are 100% to Operator

2021 Program Year
 Map Created April 19, 2021

S24 T143N R73W






United States Department of Agriculture (USDA) Farm Service Agency (FSA) maps are for FSA Program administration only. This map does not represent a legal survey or reflect actual ownership; rather it depicts the information provided directly from the producer and/or National Agricultural Imagery Program (NAIP) imagery. The producer accepts the data 'as is' and assumes all risks associated with its use. USDA-FSA assumes no responsibility for actual or consequential damage incurred as a result of any user's reliance on this data outside FSA Programs. Wetland identifiers do not represent the size, shape, or specific determination of the area. Refer to your original determination (CPA-026 and attached maps) for exact boundaries and determinations or contact USDA Natural Resources Conservation Service (NRCS). **The imagery displayed on this map was collected in calendar year 2020.**



Common Land Unit

-  Non-Cropland
-  Cropland
-  Tract Boundary
-  PLSS

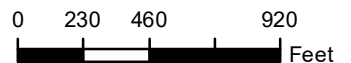
Wetland Determination Identifiers

-  Restricted Use
-  Limited Restrictions
-  Exempt from Conservation Compliance Provisions

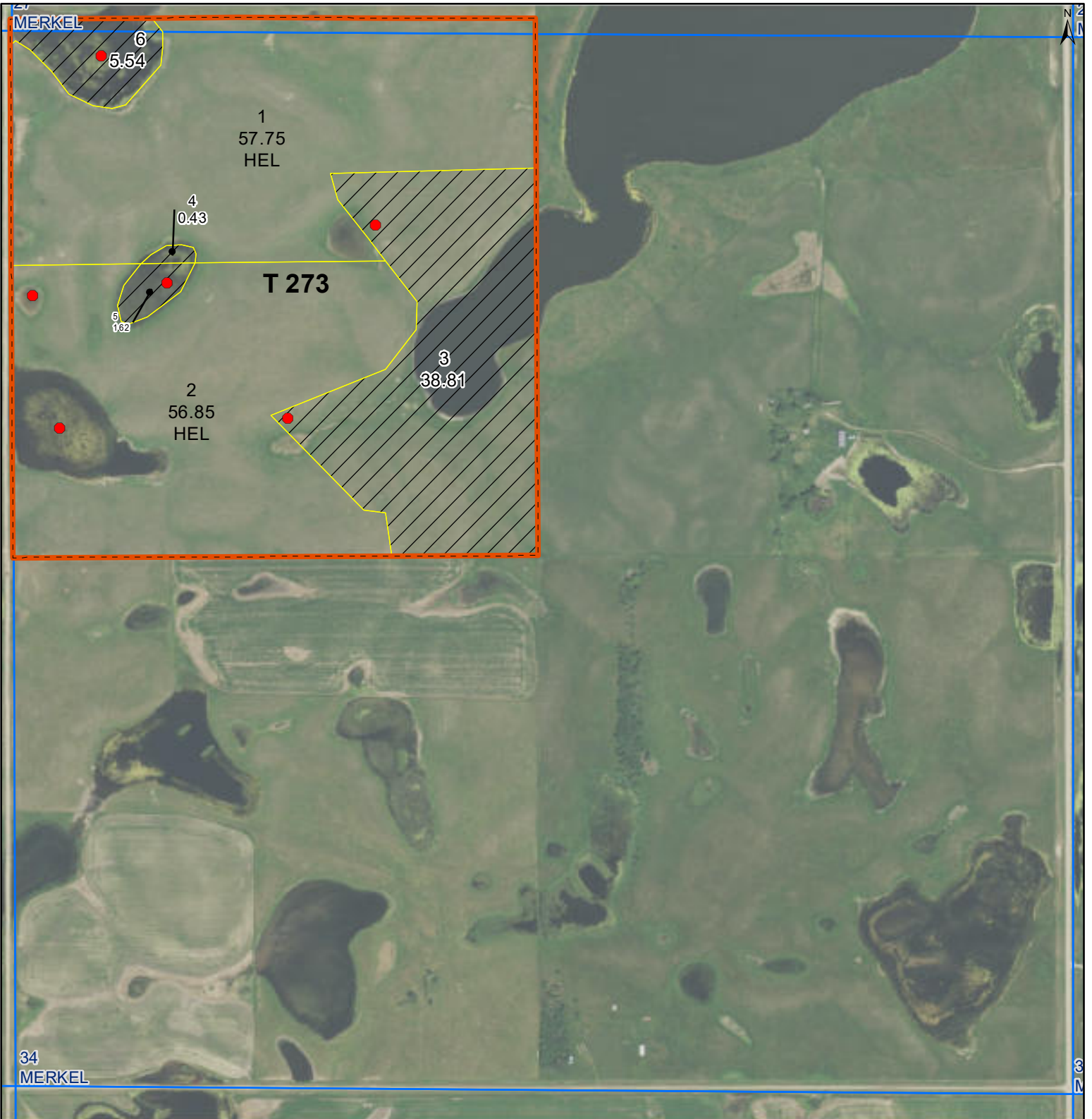
Unless Otherwise Noted:
 All crops are for grain
 All crops are non-irrigated
 Shares are 100% to Operator

2021 Program Year
 Map Created April 19, 2021

S28 T143N R72W



United States Department of Agriculture (USDA) Farm Service Agency (FSA) maps are for FSA Program administration only. This map does not represent a legal survey or reflect actual ownership; rather it depicts the information provided directly from the producer and/or National Agricultural Imagery Program (NAIP) imagery. The producer accepts the data 'as is' and assumes all risks associated with its use. USDA-FSA assumes no responsibility for actual or consequential damage incurred as a result of any user's reliance on this data outside FSA Programs. Wetland identifiers do not represent the size, shape, or specific determination of the area. Refer to your original determination (CPA-026 and attached maps) for exact boundaries and determinations or contact USDA Natural Resources Conservation Service (NRCS). **The imagery displayed on this map was collected in calendar year 2020.**



Common Land Unit

- Tract Boundary
- PLSS
- Non-Cropland
- Cropland

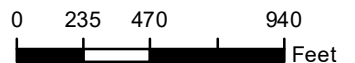
Wetland Determination Identifiers

- Restricted Use
- Limited Restrictions
- Exempt from Conservation Compliance Provisions

Unless Otherwise Noted:
 All crops are for grain
 All crops are non-irrigated
 Shares are 100% to Operator

2021 Program Year
 Map Created April 19, 2021




S34 T143N R72W



United States Department of Agriculture (USDA) Farm Service Agency (FSA) maps are for FSA Program administration only. This map does not represent a legal survey or reflect actual ownership; rather it depicts the information provided directly from the producer and/or National Agricultural Imagery Program (NAIP) imagery. The producer accepts the data 'as is' and assumes all risks associated with its use. USDA-FSA assumes no responsibility for actual or consequential damage incurred as a result of any user's reliance on this data outside FSA Programs. Wetland identifiers do not represent the size, shape, or specific determination of the area. Refer to your original determination (CPA-026 and attached maps) for exact boundaries and determinations or contact USDA Natural Resources Conservation Service (NRCS). **The imagery displayed on this map was collected in calendar year 2020.**



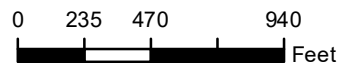
- Common Land Unit**
-  Non-Cropland
 -  Cropland
 -  Tract Boundary
 -  PLSS

- Wetland Determination Identifiers**
-  Restricted Use
 -  Limited Restrictions
 -  Exempt from Conservation Compliance Provisions

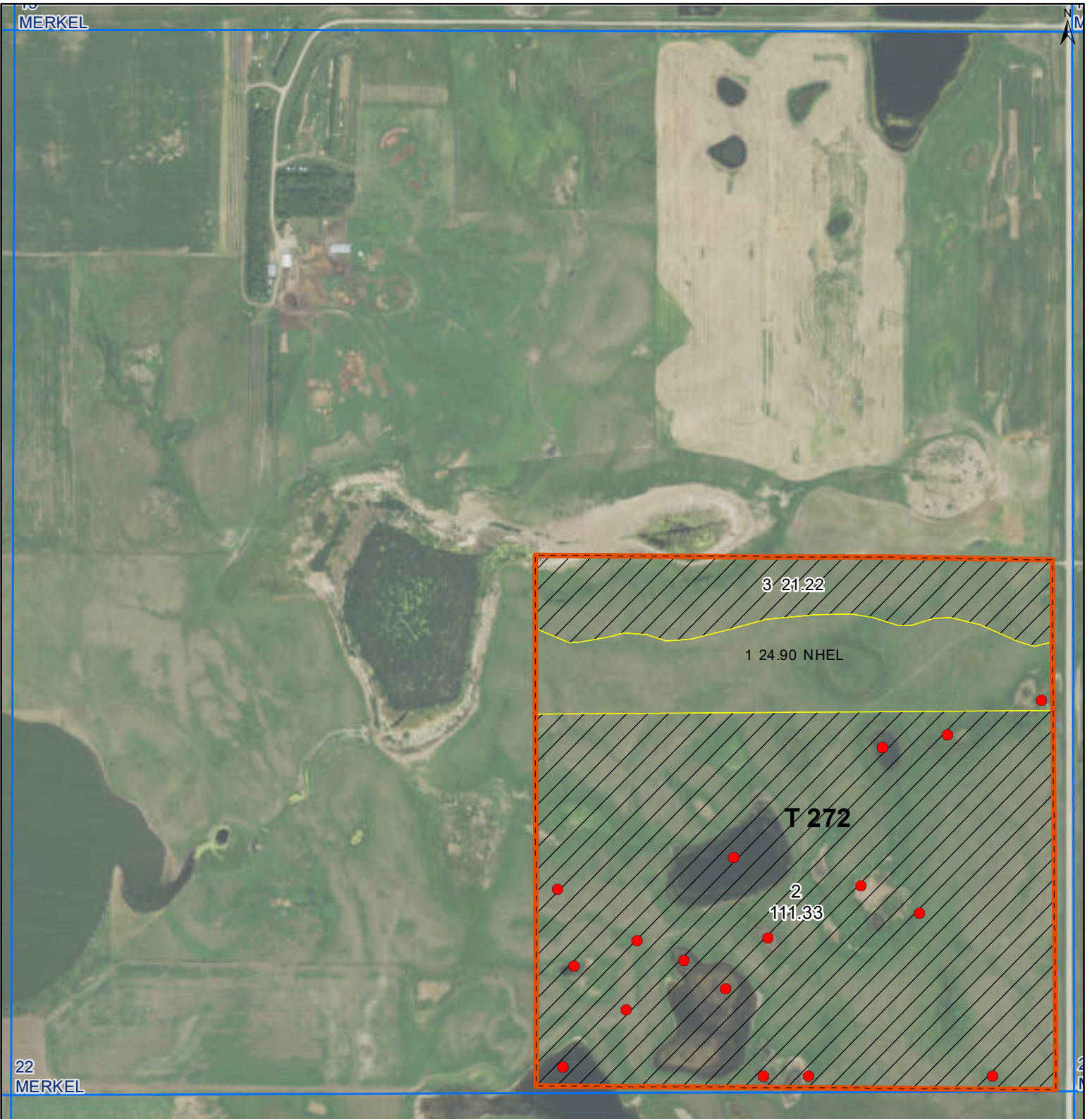
Unless Otherwise Noted:
 All crops are for grain
 All crops are non-irrigated
 Shares are 100% to Operator

2021 Program Year
 Map Created April 20, 2021

S33 T143N R72W



United States Department of Agriculture (USDA) Farm Service Agency (FSA) maps are for FSA Program administration only. This map does not represent a legal survey or reflect actual ownership; rather it depicts the information provided directly from the producer and/or National Agricultural Imagery Program (NAIP) imagery. The producer accepts the data 'as is' and assumes all risks associated with its use. USDA-FSA assumes no responsibility for actual or consequential damage incurred as a result of any user's reliance on this data outside FSA Programs. Wetland identifiers do not represent the size, shape, or specific determination of the area. Refer to your original determination (CPA-026 and attached maps) for exact boundaries and determinations or contact USDA Natural Resources Conservation Service (NRCS). **The imagery displayed on this map was collected in calendar year 2020.**



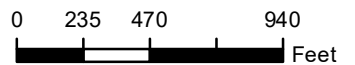
Common Land Unit
 Non-Cropland
 Cropland
 Tract Boundary
 PLSS

Wetland Determination Identifiers
 Restricted Use
 Limited Restrictions
 Exempt from Conservation
 Compliance Provisions

Unless Otherwise Noted:
 All crops are for grain
 All crops are non-irrigated
 Shares are 100% to Operator

2021 Program Year
 Map Created April 20, 2021

S22 T143N R72W



United States Department of Agriculture (USDA) Farm Service Agency (FSA) maps are for FSA Program administration only. This map does not represent a legal survey or reflect actual ownership; rather it depicts the information provided directly from the producer and/or National Agricultural Imagery Program (NAIP) imagery. The producer accepts the data 'as is' and assumes all risks associated with its use. USDA-FSA assumes no responsibility for actual or consequential damage incurred as a result of any user's reliance on this data outside FSA Programs. Wetland identifiers do not represent the size, shape, or specific determination of the area. Refer to your original determination (CPA-026 and attached maps) for exact boundaries and determinations or contact USDA Natural Resources Conservation Service (NRCS). **The imagery displayed on this map was collected in calendar year 2020.**



Abbreviated 156 Farm Record

Operator Name

CRP Contract Number(s) : None

Recon ID : 38-043-2024-147

Transferred From : None

ARCPLC G//F Eligibility : Eligible

Farm Land Data

| Farmland | Cropland | DCP Cropland | WBP | EWP | WRP | GRP | Sugarcane | Farm Status | Number Of Tracts |
|--------------------|--------------------|------------------------|----------------|------|------|------|----------------------|-------------|------------------|
| 486.86 | 246.83 | 246.83 | 0.00 | 0.00 | 0.00 | 0.00 | 0.0 | Active | 1 |
| State Conservation | Other Conservation | Effective DCP Cropland | Double Cropped | | CRP | MPL | DCP Ag.Rel. Activity | SOD | |
| 0.00 | 0.00 | 246.83 | 0.00 | | 0.00 | 0.00 | 0.00 | 0.00 | |

Crop Election Choice

| ARC Individual | ARC County | Price Loss Coverage |
|----------------|------------|---------------------|
| None | None | WHEAT, OATS, CORN |

DCP Crop Data

| Crop Name | Base Acres | CCC-505 CRP Reduction Acres | PLC Yield | HIP |
|--------------|--------------|-----------------------------|-----------|-----|
| Wheat | 49.00 | 0.00 | 17 | |
| Oats | 5.60 | 0.00 | 34 | |
| Corn | 29.20 | 0.00 | 40 | |
| TOTAL | 83.80 | 0.00 | | |

NOTES

| |
|--|
| |
|--|

Tract Number : 270

Description : 5G/ N2NW,E2SW,E2 24-143-73

FSA Physical Location : NORTH DAKOTA/KIDDER

ANSI Physical Location : NORTH DAKOTA/KIDDER

BIA Unit Range Number :

HEL Status : HEL field on tract.Conservation system being actively applied

Wetland Status : Tract contains a wetland or farmed wetland

WL Violations : None

Owners : GLENDA NEUSTEL LAND TRUST

Other Producers : None

Recon ID : 38-043-2024-146

Tract Land Data

| Farm Land | Cropland | DCP Cropland | WBP | EWP | WRP | GRP | Sugarcane |
|-----------|----------|--------------|------|------|------|------|-----------|
| 486.86 | 246.83 | 246.83 | 0.00 | 0.00 | 0.00 | 0.00 | 0.0 |



Abbreviated 156 Farm Record

Tract 270 Continued ...

| State Conservation | Other Conservation | Effective DCP Cropland | Double Cropped | CRP | MPL | DCP Ag. Rel Activity | SOD |
|--------------------|--------------------|------------------------|----------------|------|------|----------------------|------|
| 0.00 | 0.00 | 246.83 | 0.00 | 0.00 | 0.00 | 0.00 | 0.00 |

DCP Crop Data

| Crop Name | Base Acres | CCC-505 CRP Reduction Acres | PLC Yield |
|--------------|--------------|-----------------------------|-----------|
| Wheat | 49.00 | 0.00 | 17 |
| Oats | 5.60 | 0.00 | 34 |
| Corn | 29.20 | 0.00 | 40 |
| TOTAL | 83.80 | 0.00 | |

NOTES

| |
|--|
| |
|--|

In accordance with Federal civil rights law and U.S. Department of Agriculture (USDA) civil rights regulations and policies, the USDA, its Agencies, offices, and employees, and institutions participating in or administering USDA programs are prohibited from discriminating based on race, color, national origin, religion, sex, gender identity (including gender expression), sexual orientation, disability, age, marital status, family/parental status, income derived from a public assistance program, political beliefs, or reprisal or retaliation for prior civil rights activity, in any program or activity conducted or funded by USDA (not all bases apply to all programs). Remedies and complaint filing deadlines vary by program or incident.

Persons with disabilities who require alternative means of communication for program information (e.g., Braille, large print, audiotape, American Sign Language, etc.) should contact the responsible Agency or USDA's TARGET Center at (202) 720-2600 (voice and TTY) or contact USDA through the Federal Relay Service at (800) 877-8339. Additionally, program information may be made available in languages other than English.

To file a program discrimination complaint, complete the USDA Program Discrimination Complaint Form, AD-3027, found online at http://www.ascr.usda.gov/complaint_filing_cust.html and at any USDA office or write a letter addressed to USDA and provide in the letter all of the information requested in the form. To request a copy of the complaint form, call (866) 632-9992. Submit your completed form or letter to USDA by: (1) mail: U.S. Department of Agriculture Office of the Assistant Secretary for Civil Rights 1400 Independence Avenue, SW Washington, D.C. 20250-9410; (2) fax: (202) 690-7442; or (3) e-mail: program.intake@usda.gov. USDA is an equal opportunity provider, employer, and lender.



Abbreviated 156 Farm Record

Operator Name :
 CRP Contract Number(s) : None
 Recon ID : None
 Transferred From : None
 ARCPLC G//F Eligibility : Eligible

Farm Land Data

| Farmland | Cropland | DCP Cropland | WBP | EWP | WRP | GRP | Sugarcane | Farm Status | Number Of Tracts |
|--------------------|--------------------|------------------------|----------------|------|------|------|----------------------|-------------|------------------|
| 161.00 | 114.60 | 114.60 | 0.00 | 0.00 | 0.00 | 0.00 | 0.0 | Active | 1 |
| State Conservation | Other Conservation | Effective DCP Cropland | Double Cropped | | CRP | MPL | DCP Ag.Rel. Activity | SOD | |
| 0.00 | 0.00 | 114.60 | 0.00 | | 0.00 | 0.00 | 0.00 | 0.00 | |

Crop Election Choice

| ARC Individual | ARC County | Price Loss Coverage |
|----------------|------------|---------------------|
| None | CORN | WHEAT, OATS |

DCP Crop Data

| Crop Name | Base Acres | CCC-505 CRP Reduction Acres | PLC Yield | HIP |
|--------------|--------------|-----------------------------|-----------|-----|
| Wheat | 22.30 | 0.00 | 17 | |
| Oats | 2.60 | 0.00 | 34 | |
| Corn | 13.20 | 0.00 | 40 | 0 |
| TOTAL | 38.10 | 0.00 | | |

NOTES

| |
|--|
| |
|--|

Tract Number : 273

Description : 6I/ NW34-143-72
 FSA Physical Location : NORTH DAKOTA/KIDDER
 ANSI Physical Location : NORTH DAKOTA/KIDDER
 BIA Unit Range Number :
 HEL Status : HEL field on tract.Conservation system being actively applied
 Wetland Status : Tract contains a wetland or farmed wetland
 WL Violations : None
 Owners : GLENDA NEUSTEL LAND TRUST
 Other Producers : None
 Recon ID : None

Tract Land Data

| Farm Land | Cropland | DCP Cropland | WBP | EWP | WRP | GRP | Sugarcane |
|-----------|----------|--------------|------|------|------|------|-----------|
| 161.00 | 114.60 | 114.60 | 0.00 | 0.00 | 0.00 | 0.00 | 0.0 |



Abbreviated 156 Farm Record

Tract 273 Continued ...

| State Conservation | Other Conservation | Effective DCP Cropland | Double Cropped | CRP | MPL | DCP Ag. Rel Activity | SOD |
|--------------------|--------------------|------------------------|----------------|------|------|----------------------|------|
| 0.00 | 0.00 | 114.60 | 0.00 | 0.00 | 0.00 | 0.00 | 0.00 |

DCP Crop Data

| Crop Name | Base Acres | CCC-505 CRP Reduction Acres | PLC Yield |
|--------------|--------------|-----------------------------|-----------|
| Wheat | 22.30 | 0.00 | 17 |
| Oats | 2.60 | 0.00 | 34 |
| Corn | 13.20 | 0.00 | 40 |
| TOTAL | 38.10 | 0.00 | |

NOTES

| |
|--|
| |
|--|

In accordance with Federal civil rights law and U.S. Department of Agriculture (USDA) civil rights regulations and policies, the USDA, its Agencies, offices, and employees, and institutions participating in or administering USDA programs are prohibited from discriminating based on race, color, national origin, religion, sex, gender identity (including gender expression), sexual orientation, disability, age, marital status, family/parental status, income derived from a public assistance program, political beliefs, or reprisal or retaliation for prior civil rights activity, in any program or activity conducted or funded by USDA (not all bases apply to all programs). Remedies and complaint filing deadlines vary by program or incident.

Persons with disabilities who require alternative means of communication for program information (e.g., Braille, large print, audiotape, American Sign Language, etc.) should contact the responsible Agency or USDA's TARGET Center at (202) 720-2600 (voice and TTY) or contact USDA through the Federal Relay Service at (800) 877-8339. Additionally, program information may be made available in languages other than English.

To file a program discrimination complaint, complete the USDA Program Discrimination Complaint Form, AD-3027, found online at http://www.ascr.usda.gov/complaint_filing_cust.html and at any USDA office or write a letter addressed to USDA and provide in the letter all of the information requested in the form. To request a copy of the complaint form, call (866) 632-9992. Submit your completed form or letter to USDA by: (1) mail: U.S. Department of Agriculture Office of the Assistant Secretary for Civil Rights 1400 Independence Avenue, SW Washington, D.C. 20250-9410; (2) fax: (202) 690-7442; or (3) e-mail: program.intake@usda.gov. USDA is an equal opportunity provider, employer, and lender.



Abbreviated 156 Farm Record

Operator Name

CRP Contract Number(s) : None
 Recon ID : 38-043-2009-328
 Transferred From : None
 ARCPLC G//F Eligibility : Eligible

Farm Land Data

| Farmland | Cropland | DCP Cropland | WBP | EWP | WRP | GRP | Sugarcane | Farm Status | Number Of Tracts |
|--------------------|--------------------|------------------------|----------------|------|------|------|----------------------|-------------|------------------|
| 315.73 | 166.87 | 166.87 | 0.00 | 0.00 | 0.00 | 0.00 | 0.0 | Active | 1 |
| State Conservation | Other Conservation | Effective DCP Cropland | Double Cropped | | CRP | MPL | DCP Ag.Rel. Activity | SOD | |
| 0.00 | 0.00 | 166.87 | 0.00 | | 0.00 | 0.00 | 0.00 | 0.00 | |

Crop Election Choice

| ARC Individual | ARC County | Price Loss Coverage |
|----------------|------------|---------------------|
| None | OATS, CORN | WHEAT |

DCP Crop Data

| Crop Name | Base Acres | CCC-505 CRP Reduction Acres | PLC Yield | HIP |
|--------------|--------------|-----------------------------|-----------|-----|
| Wheat | 32.60 | 0.00 | 25 | |
| Oats | 3.80 | 0.00 | 35 | |
| Corn | 19.40 | 0.00 | 40 | 0 |
| TOTAL | 55.80 | 0.00 | | |

NOTES

Tract Number : 4131

Description : W2 28-143-72
 FSA Physical Location : NORTH DAKOTA/KIDDER
 ANSI Physical Location : NORTH DAKOTA/KIDDER
 BIA Unit Range Number :
 HEL Status : HEL field on tract.Conservation system being actively applied
 Wetland Status : Tract contains a wetland or farmed wetland
 WL Violations : None
 Owners : GLENDA NEUSTEL LAND TRUST
 Other Producers :
 Recon ID : 38-043-2024-91

Tract Land Data

| Farm Land | Cropland | DCP Cropland | WBP | EWP | WRP | GRP | Sugarcane |
|-----------|----------|--------------|------|------|------|------|-----------|
| 315.73 | 166.87 | 166.87 | 0.00 | 0.00 | 0.00 | 0.00 | 0.0 |

Abbreviated 156 Farm Record

Tract 4131 Continued ...

| State Conservation | Other Conservation | Effective DCP Cropland | Double Cropped | CRP | MPL | DCP Ag. Rel Activity | SOD |
|--------------------|--------------------|------------------------|----------------|------|------|----------------------|------|
| 0.00 | 0.00 | 166.87 | 0.00 | 0.00 | 0.00 | 0.00 | 0.00 |

DCP Crop Data

| Crop Name | Base Acres | CCC-505 CRP Reduction Acres | PLC Yield |
|--------------|--------------|-----------------------------|-----------|
| Wheat | 32.60 | 0.00 | 25 |
| Oats | 3.80 | 0.00 | 35 |
| Corn | 19.40 | 0.00 | 40 |
| TOTAL | 55.80 | 0.00 | |

NOTES

| |
|--|
| |
|--|

In accordance with Federal civil rights law and U.S. Department of Agriculture (USDA) civil rights regulations and policies, the USDA, its Agencies, offices, and employees, and institutions participating in or administering USDA programs are prohibited from discriminating based on race, color, national origin, religion, sex, gender identity (including gender expression), sexual orientation, disability, age, marital status, family/parental status, income derived from a public assistance program, political beliefs, or reprisal or retaliation for prior civil rights activity, in any program or activity conducted or funded by USDA (not all bases apply to all programs). Remedies and complaint filing deadlines vary by program or incident.

Persons with disabilities who require alternative means of communication for program information (e.g., Braille, large print, audiotape, American Sign Language, etc.) should contact the responsible Agency or USDA's TARGET Center at (202) 720-2600 (voice and TTY) or contact USDA through the Federal Relay Service at (800) 877-8339. Additionally, program information may be made available in languages other than English.

To file a program discrimination complaint, complete the USDA Program Discrimination Complaint Form, AD-3027, found online at http://www.ascr.usda.gov/complaint_filing_cust.html and at any USDA office or write a letter addressed to USDA and provide in the letter all of the information requested in the form. To request a copy of the complaint form, call (866) 632-9992. Submit your completed form or letter to USDA by: (1) mail: U.S. Department of Agriculture Office of the Assistant Secretary for Civil Rights 1400 Independence Avenue, SW Washington, D.C. 20250-9410; (2) fax: (202) 690-7442; or (3) e-mail: program.intake@usda.gov. USDA is an equal opportunity provider, employer, and lender.



Abbreviated 156 Farm Record

Operator Name

CRP Contract Number(s) : None

Recon ID : 38-043-2017-28

Transferred From : None

ARCPLC G/I/F Eligibility : Ineligible - Complete G/I/F History

Farm Land Data

| Farmland | Cropland | DCP Cropland | WBP | EWP | WRP | GRP | Sugarcane | Farm Status | Number Of Tracts |
|--------------------|--------------------|------------------------|------|----------------|------|------|-----------|----------------------|------------------|
| 320.11 | 50.90 | 50.90 | 0.00 | 0.00 | 0.00 | 0.00 | 0.0 | Active | 2 |
| State Conservation | Other Conservation | Effective DCP Cropland | | Double Cropped | | CRP | MPL | DCP Ag.Rel. Activity | SOD |
| 0.00 | 0.00 | 50.90 | | 0.00 | | 0.00 | 0.00 | 0.00 | 0.00 |

Crop Election Choice

| ARC Individual | ARC County | Price Loss Coverage |
|--------------------------|----------------------|-------------------------------|
| None | None | None |
| ARC Individual - Default | ARC County - Default | Price Loss Coverage - Default |
| None | WHEAT, OATS, CORN | None |

DCP Crop Data

| Crop Name | Base Acres | CCC-505 CRP Reduction Acres | PLC Yield | HIP |
|--------------|--------------|-----------------------------|-----------|-----|
| Wheat | 10.10 | 0.00 | 17 | |
| Oats | 1.20 | 0.00 | 34 | |
| Corn | 5.90 | 0.00 | 40 | |
| TOTAL | 17.20 | 0.00 | | |

NOTES

Tract Number : 272

Description : SE 22-143-72

FSA Physical Location : NORTH DAKOTA/KIDDER

ANSI Physical Location : NORTH DAKOTA/KIDDER

BIA Unit Range Number :

HEL Status : NHEL: No agricultural commodity planted on undetermined fields

Wetland Status : Tract contains a wetland or farmed wetland

WL Violations : None

Owners : GLENDA NEUSTEL LAND TRUST

Other Producers : None

Recon ID : None

Abbreviated 156 Farm Record

Tract Land Data

Tract 272 Continued ...

| Farm Land | Cropland | DCP Cropland | WBP | EWP | WRP | GRP | Sugarcane |
|--------------------|--------------------|------------------------|----------------|------|------|----------------------|-----------|
| 157.45 | 24.90 | 24.90 | 0.00 | 0.00 | 0.00 | 0.00 | 0.0 |
| State Conservation | Other Conservation | Effective DCP Cropland | Double Cropped | CRP | MPL | DCP Ag. Rel Activity | SOD |
| 0.00 | 0.00 | 24.90 | 0.00 | 0.00 | 0.00 | 0.00 | 0.00 |

DCP Crop Data

| Crop Name | Base Acres | CCC-505 CRP Reduction Acres | PLC Yield |
|--------------|-------------|-----------------------------|-----------|
| Wheat | 5.00 | 0.00 | 17 |
| Oats | 0.60 | 0.00 | 34 |
| Corn | 2.90 | 0.00 | 40 |
| TOTAL | 8.50 | 0.00 | |

NOTES

Tract Number : 4130

Description : NW 33-143-72
FSA Physical Location : NORTH DAKOTA/KIDDER
ANSI Physical Location : NORTH DAKOTA/KIDDER
BIA Unit Range Number :
HEL Status : NHEL: No agricultural commodity planted on undetermined fields
Wetland Status : Tract contains a wetland or farmed wetland
WL Violations : None
Owners : GLENDA NEUSTEL LAND TRUST
Other Producers : None
Recon ID : 38-043-2009-327

Tract Land Data

| Farm Land | Cropland | DCP Cropland | WBP | EWP | WRP | GRP | Sugarcane |
|--------------------|--------------------|------------------------|----------------|------|------|----------------------|-----------|
| 162.66 | 26.00 | 26.00 | 0.00 | 0.00 | 0.00 | 0.00 | 0.0 |
| State Conservation | Other Conservation | Effective DCP Cropland | Double Cropped | CRP | MPL | DCP Ag. Rel Activity | SOD |
| 0.00 | 0.00 | 26.00 | 0.00 | 0.00 | 0.00 | 0.00 | 0.00 |

DCP Crop Data

| Crop Name | Base Acres | CCC-505 CRP Reduction Acres | PLC Yield |
|-----------|------------|-----------------------------|-----------|
| Wheat | 5.10 | 0.00 | 17 |
| Oats | 0.60 | 0.00 | 34 |



Abbreviated 156 Farm Record

Tract 4130 Continued ...

| | | | |
|--------------|-------------|-------------|----|
| Corn | 3.00 | 0.00 | 40 |
| TOTAL | 8.70 | 0.00 | |

NOTES

Empty box for notes.

In accordance with Federal civil rights law and U.S. Department of Agriculture (USDA) civil rights regulations and policies, the USDA, its Agencies, offices, and employees, and institutions participating in or administering USDA programs are prohibited from discriminating based on race, color, national origin, religion, sex, gender identity (including gender expression), sexual orientation, disability, age, marital status, family/parental status, income derived from a public assistance program, political beliefs, or reprisal or retaliation for prior civil rights activity, in any program or activity conducted or funded by USDA (not all bases apply to all programs). Remedies and complaint filing deadlines vary by program or incident.

Persons with disabilities who require alternative means of communication for program information (e.g., Braille, large print, audiotape, American Sign Language, etc.) should contact the responsible Agency or USDA's TARGET Center at (202) 720-2600 (voice and TTY) or contact USDA through the Federal Relay Service at (800) 877-8339. Additionally, program information may be made available in languages other than English.

To file a program discrimination complaint, complete the USDA Program Discrimination Complaint Form, AD-3027, found online at http://www.ascr.usda.gov/complaint_filing_cust.html and at any USDA office or write a letter addressed to USDA and provide in the letter all of the information requested in the form. To request a copy of the complaint form, call (866) 632-9992. Submit your completed form or letter to USDA by: (1) mail: U.S. Department of Agriculture Office of the Assistant Secretary for Civil Rights 1400 Independence Avenue, SW Washington, D.C. 20250-9410; (2) fax: (202) 690-7442; or (3) e-mail: program.intake@usda.gov. USDA is an equal opportunity provider, employer, and lender.