

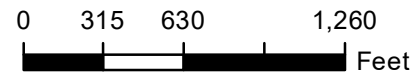
## Farm 8335

**S22 T161N R75W**

Phy Cnty: Bottineau

**2023 Program Year**

Map Created February 07, 2023



- Unless Otherwise Noted:**
- Barley = Spring for Grain
  - Canola = Spring for Processing
  - Corn = Yellow for Grain
  - Flax = Common for Grain
  - Oats = Spring for Grain
  - Soybeans = Common for Grain
  - Sunflowers = Oil for Grain
  - Wheat = Spring for Grain
  - All fields are non-irrigated
  - Shares are 100% to operator

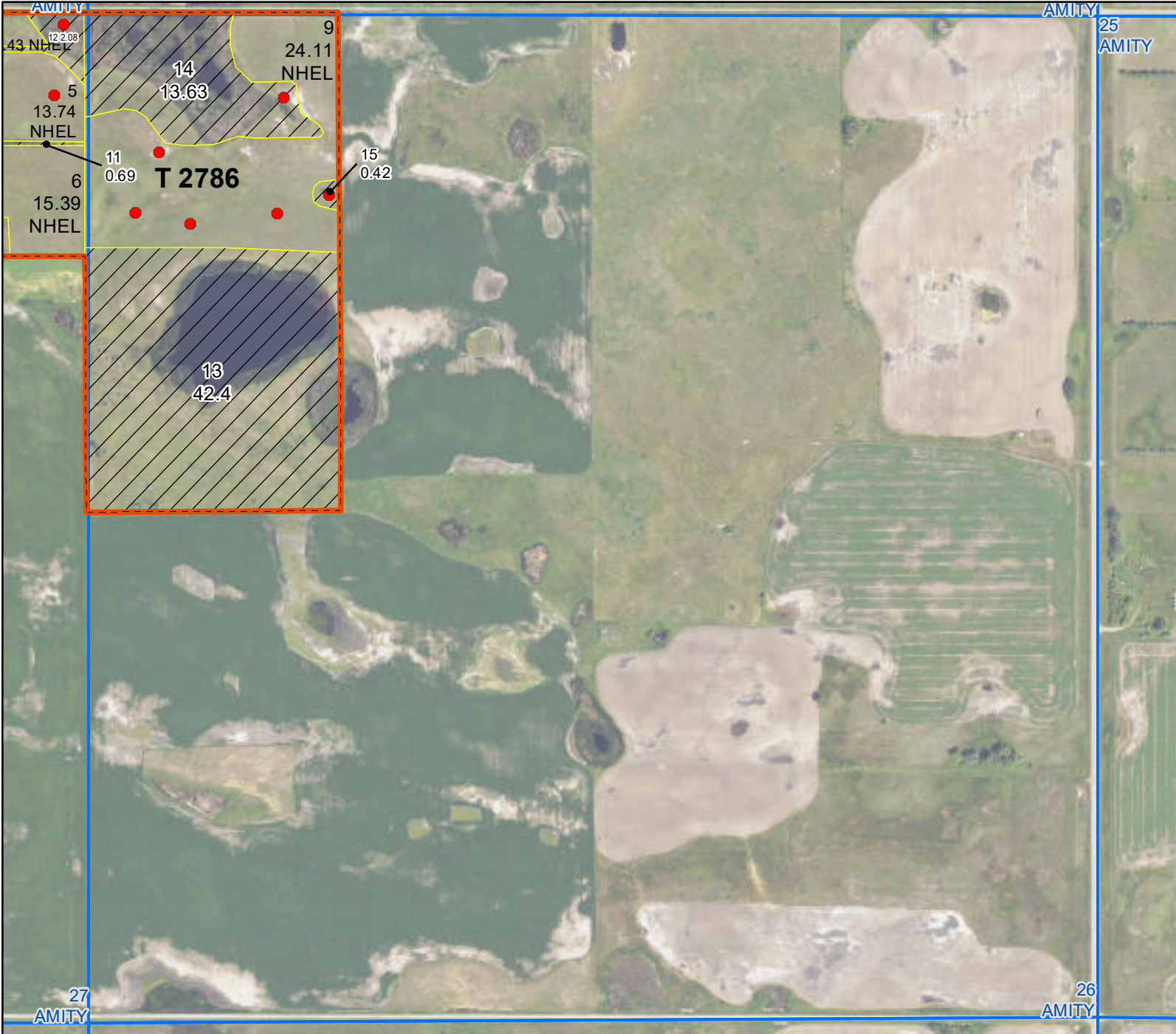
### Common Land Unit

- Tract Boundary
- Non-Cropland
- Cropland
- PLSS

### Wetland Determination Identifiers

- Restricted Use
- Limited Restrictions
- Exempt from Conservation Compliance Provisions

United States Department of Agriculture (USDA) Farm Service Agency (FSA) maps are for FSA Program administration only. This map does not represent a legal survey or reflect actual ownership; rather it depicts the information provided directly from the producer and/or National Agricultural Imagery Program (NAIP) imagery. The producer accepts the data 'as is' and assumes all risks associated with its use. USDA-FSA assumes no responsibility for actual or consequential damage incurred as a result of any user's reliance on this data outside FSA Programs. Wetland identifiers do not represent the size, shape, or specific determination of the area. Refer to your original determination (CPA-026 and attached maps) for exact boundaries and determinations or contact USDA Natural Resources Conservation Service (NRCS). **The imagery displayed on this map was collected in calendar year 2022.**



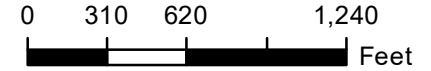
## Farm 8335

S26 T161N R75W

Phy Cnty: Bottineau

2023 Program Year

Map Created February 07, 2023



- Unless Otherwise Noted:**
- Barley = Spring for Grain
  - Canola = Spring for Processing
  - Corn = Yellow for Grain
  - Flax = Common for Grain
  - Oats = Spring for Grain
  - Soybeans = Common for Grain
  - Sunflowers = Oil for Grain
  - Wheat = Spring for Grain
  - All fields are non-irrigated
  - Shares are 100% to operator

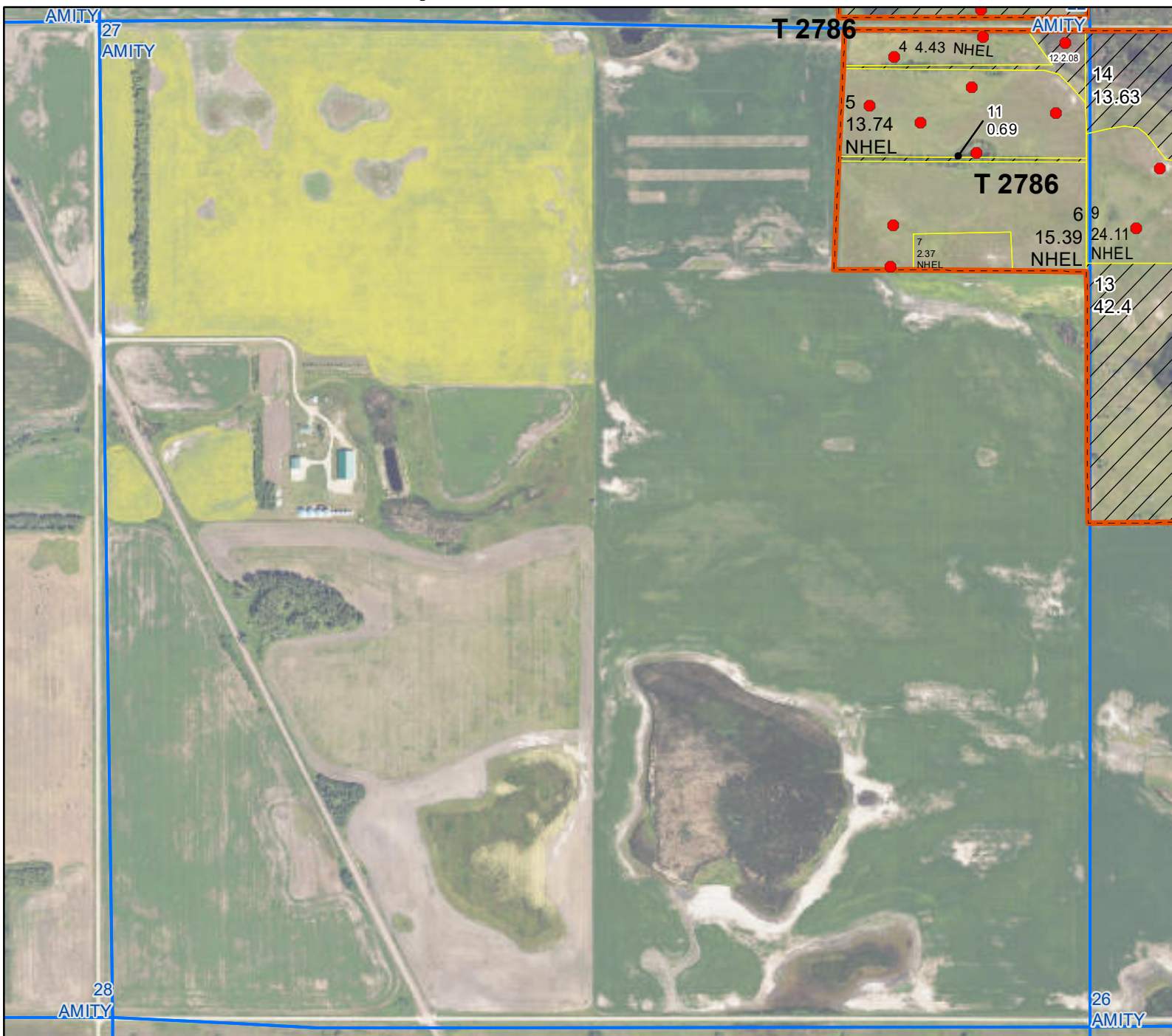
### Common Land Unit

- Tract Boundary
- Non-Cropland
- Cropland
- PLSS

### Wetland Determination Identifiers

- Restricted Use
- Limited Restrictions
- Exempt from Conservation Compliance Provisions

United States Department of Agriculture (USDA) Farm Service Agency (FSA) maps are for FSA Program administration only. This map does not represent a legal survey or reflect actual ownership; rather it depicts the information provided directly from the producer and/or National Agricultural Imagery Program (NAIP) imagery. The producer accepts the data 'as is' and assumes all risks associated with its use. USDA-FSA assumes no responsibility for actual or consequential damage incurred as a result of any user's reliance on this data outside FSA Programs. Wetland identifiers do not represent the size, shape, or specific determination of the area. Refer to your original determination (CPA-026 and attached maps) for exact boundaries and determinations or contact USDA Natural Resources Conservation Service (NRCS). **The imagery displayed on this map was collected in calendar year 2022.**



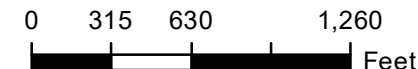
## Farm 8335

**S27 T161N R75W**

Phy Cnty: Bottineau

**2023 Program Year**

Map Created February 07, 2023



### Unless Otherwise Noted:

- Barley = Spring for Grain
- Canola = Spring for Processing
- Corn = Yellow for Grain
- Flax = Common for Grain
- Oats = Spring for Grain
- Soybeans = Common for Grain
- Sunflowers = Oil for Grain
- Wheat = Spring for Grain
- All fields are non-irrigated
- Shares are 100% to operator

### Common Land Unit

- Tract Boundary
- Non-Cropland
- Cropland
- PLSS

### Wetland Determination Identifiers

- Restricted Use
- Limited Restrictions
- Exempt from Conservation Compliance Provisions



**Abbreviated 156 Farm Record**

<b>Tract Number</b>	: 2786
<b>Description</b>	: SESE 22;W2NW 26;NENE 27 161 75
<b>FSA Physical Location</b>	: NORTH DAKOTA/BOTTINEAU
<b>ANSI Physical Location</b>	: NORTH DAKOTA/BOTTINEAU
<b>BIA Unit Range Number</b>	:
<b>HEL Status</b>	: NHEL: No agricultural commodity planted on undetermined fields
<b>Wetland Status</b>	: Tract contains a wetland or farmed wetland
<b>WL Violations</b>	: None
<b>Owners</b>	: MR JUSTIN STEVEN BERNSTEIN, MRS KALEENA RAEANNE BERNSTEIN
<b>Other Producers</b>	: None
<b>Recon ID</b>	: None

Tract Land Data							
Farm Land	Cropland	DCP Cropland	WBP	EWP	WRP	GRP	Sugarcane
158.41	60.04	60.04	0.00	0.00	0.00	0.00	0.0

**Tract 2786 Continued ...**

State Conservation	Other Conservation	Effective DCP Cropland	Double Cropped	CRP	MPL	DCP Ag. Rel Activity	SOD
0.00	0.00	60.04	0.00	0.00	0.00	0.00	0.00

DCP Crop Data			
Crop Name	Base Acres	CCC-505 CRP Reduction Acres	PLC Yield
Wheat	8.00	0.00	24
Barley	7.70	0.00	36
<b>TOTAL</b>	<b>15.70</b>	<b>0.00</b>	

NOTES