

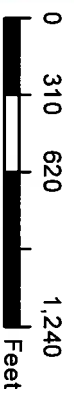
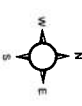
**Farm 1335**

**S21 T146N R74W**

Phy Cnty: Sheridan

**2024 Program Year**

Map Created April 18, 2024



**Unless Otherwise Noted:**

- Barley = Spring for Grain
  - Canola = Spring for Processing
  - Corn = Yellow for Grain
  - Flax = Common for Grain
  - Oats = Spring for Grain
  - Soybeans = Common for Grain
  - Sunflowers = Oil for Grain
  - Wheat = Spring for Grain
- All fields are non-irrigated  
Shares are 100% to operator

**Common Land Unit**

- Tract Boundary
- Non-Cropland
- Cropland
- PLSS

**Wetland Determination Identifiers**

- Restricted Use
- Limited Restrictions
- Exempt from Conservation Compliance Provisions

United States Department of Agriculture (USDA) Farm Service Agency (FSA) maps are for FSA Program administration only. This map does not represent a legal survey or reflect actual ownership; rather it depicts the information provided directly from the producer and/or National Agricultural Imagery Program (NAIP) imagery. The producer accepts the data 'as is' and assumes all risks associated with its use. USDA-FSA assumes no responsibility for actual or consequential damage incurred as a result of any user's reliance on this data outside FSA Programs. Wetland identifiers do not represent the size, shape, or specific determination of the area. Refer to your original determination (CPA-026 and attached maps) for exact boundaries and determinations or contact USDA Natural Resources Conservation Service (NRCS). The imagery displayed on this map was collected in calendar year 2023.



United States  
Department of  
Agriculture

# Sheridan County, North Dakota

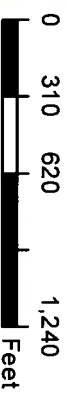
## Farm 1335

S28 T146N R74W

Phy Cnty: Sheridan

## 2024 Program Year

Map Created April 18, 2024



### Unless Otherwise Noted:

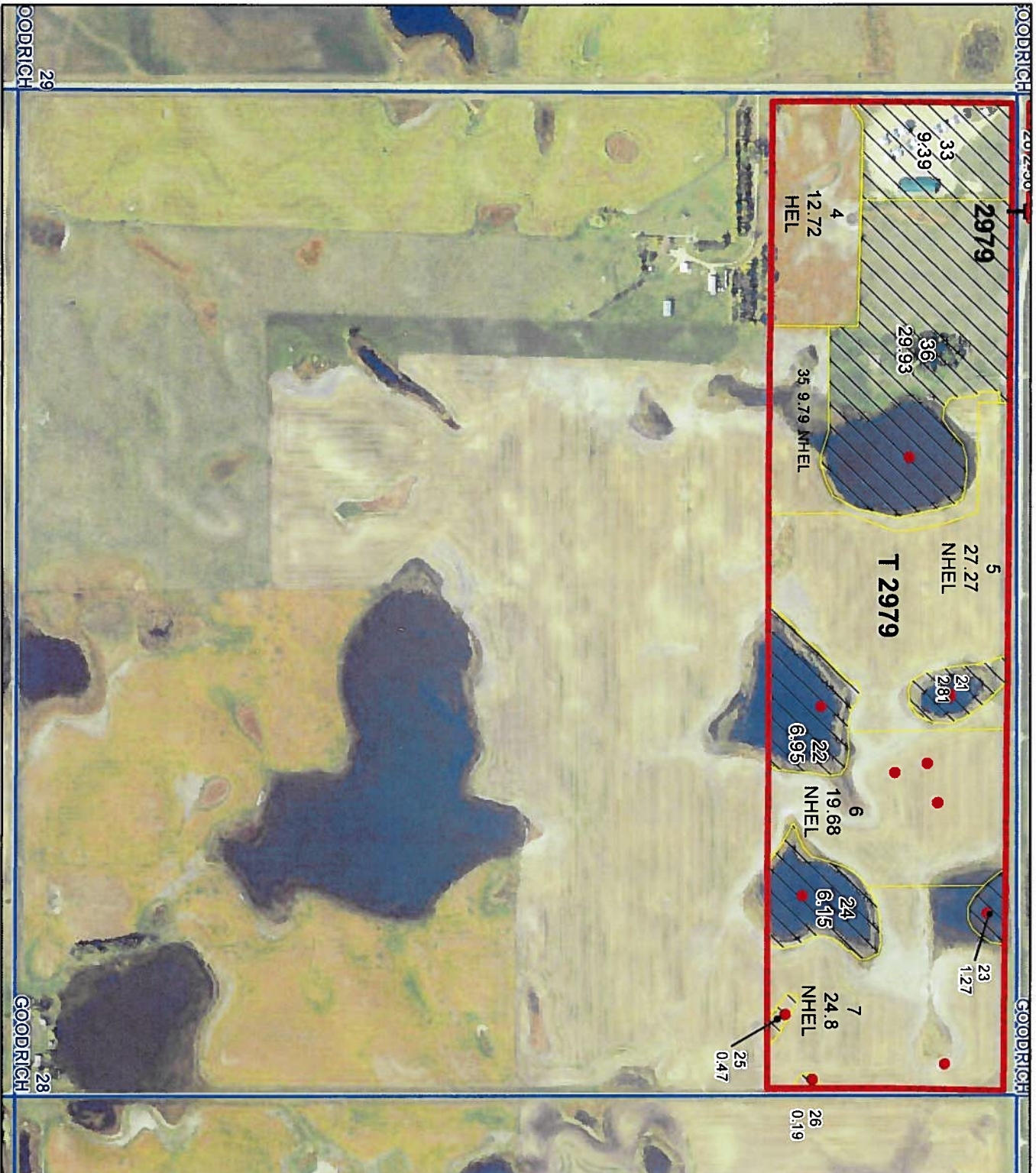
- Barley = Spring for Grain
  - Canola = Spring for Processing
  - Corn = Yellow for Grain
  - Flax = Common for Grain
  - Oats = Spring for Grain
  - Soybeans = Common for Grain
  - Sunflowers = Oil for Grain
  - Wheat = Spring for Grain
- All fields are non-irrigated  
Shares are 100% to operator

## Common Land Unit

- Tract Boundary
- Non-Cropland
- Cropland
- PLSS

## Wetland Determination Identifiers

- Restricted Use
- Limited Restrictions
- Exempt from Conservation Compliance Provisions



United States Department of Agriculture (USDA) Farm Service Agency (FSA) maps are for FSA Program administration only. This map does not represent a legal survey or reflect actual ownership; rather it depicts the information provided directly from the producer and/or National Agricultural Imagery Program (NAIP) imagery. The producer accepts the data as is and assumes all risks associated with its use. USDA-FSA assumes no responsibility for actual or consequential damage incurred as a result of any user's reliance on this data outside FSA Programs. Wetland identifiers do not represent the size, shape, or specific determination of the area. Refer to your original determination (CPA-026 and attached maps) for exact boundaries and determinations or contact USDA Natural Resources Conservation Service (NRCS). The imagery displayed on this map was collected in calendar year 2023.

NORTH DAKOTA

SHERIDAN

Form: FSA-156EZ

See Page 2 for non-discriminatory Statements.



United States Department of Agriculture  
Farm Service Agency

Abbreviated 156 Farm Record

FARM : 1335

Prepared : 10/31/24 9:05 AM CST

Crop Year : 2025

Operator Name

CRP Contract Number(s) : None

Recon ID : None

Transferred From : None

ARCPLC G//F Eligibility : Eligible

Farm Land Data

Farmland	Cropland	DCP Cropland	WBP	EWP	WRP	GRP	Sugarcane	Farm Status	Number Of Tracts
611.84	450.75	450.75	0.00	0.00	0.00	0.00	0.0	Active	1
State Conservation	Other Conservation	Effective DCP Cropland	Double Cropped		CRP	MPL	DCP Ag.Rel. Activity	SOD	
0.00	0.00	450.75	0.00		0.00	0.00	0.00	0.00	

Crop Election Choice

ARC Individual	ARC County	Price Loss Coverage
None	WHEAT, OATS, FLAX, CANOL	BARLY

DCP Crop Data

Crop Name	Base Acres	CCC-505 CRP Reduction Acres	PLC Yield	HIP
Wheat	174.00	0.00	36	
Oats	22.80	0.00	36	
Flax	44.90	0.00	22	
Barley	53.20	0.00	74	
Canola	29.70	0.00	1110	
<b>TOTAL</b>	<b>324.60</b>	<b>0.00</b>		

NOTES

Tract Number : 2979

Description : S2,NE-21;N2N2-28-146-74

FSA Physical Location : NORTH DAKOTA/SHERIDAN

ANSI Physical Location : NORTH DAKOTA/SHERIDAN

BIA Unit Range Number :

HEL Status : HEL field on tract.Conservation system being actively applied

Wetland Status : Tract contains a wetland or farmed wetland

WL Violations : None

Owners : SCHMIDT IRREVOCABLE TRUST

Other Producers : None

Recon ID : None

Abbreviated 156 Farm Record

Tract Land Data

Tract 2979 Continued ...

Farm Land	Cropland	DCP Cropland	WBP	EWP	WRP	GRP	Sugarcane
611.84	450.75	450.75	0.00	0.00	0.00	0.00	0.0
State Conservation	Other Conservation	Effective DCP Cropland	Double Cropped	CRP	MPL	DCP Ag. Rel Activity	SOD
0.00	0.00	450.75	0.00	0.00	0.00	0.00	0.00

DCP Crop Data

Crop Name	Base Acres	CCC-505 CRP Reduction Acres	PLC Yield
Wheat	174.00	0.00	36
Oats	22.80	0.00	36
Flax	44.90	0.00	22
Barley	53.20	0.00	74
Canola	29.70	0.00	1110
<b>TOTAL</b>	<b>324.60</b>	<b>0.00</b>	

NOTES

--

In accordance with Federal civil rights law and U.S. Department of Agriculture (USDA) civil rights regulations and policies, the USDA, its Agencies, offices, and employees, and institutions participating in or administering USDA programs are prohibited from discriminating based on race, color, national origin, religion, sex, gender identity (including gender expression), sexual orientation, disability, age, marital status, family/parental status, income derived from a public assistance program, political beliefs, or reprisal or retaliation for prior civil rights activity, in any program or activity conducted or funded by USDA (not all bases apply to all programs). Remedies and complaint filing deadlines vary by program or incident.

Persons with disabilities who require alternative means of communication for program information (e.g., Braille, large print, audiotope, American Sign Language, etc.) should contact the responsible Agency or USDA's TARGET Center at (202) 720-2600 (voice and TTY) or contact USDA through the Federal Relay Service at (800) 877-8339. Additionally, program information may be made available in languages other than English.

To file a program discrimination complaint, complete the USDA Program Discrimination Complaint Form, AD-3027, found online at [http://www.ascr.usda.gov/complaint\\_filing\\_cust.html](http://www.ascr.usda.gov/complaint_filing_cust.html) and at any USDA office or write a letter addressed to USDA and provide in the letter all of the information requested in the form. To request a copy of the complaint form, call (866) 632-9992. Submit your completed form or letter to USDA by: (1) mail: U.S. Department of Agriculture Office of the Assistant Secretary for Civil Rights 1400 Independence Avenue, SW Washington, D.C. 20250-9410; (2) fax: (202) 690-7442; or (3) e-mail: [program.intake@usda.gov](mailto:program.intake@usda.gov). USDA is an equal opportunity provider, employer, and lender.