



## Farm 1092

**S20 T160N R64W**  
Phy Cnty: Cavalier

**2024 Program Year**  
Map Created April 01, 2024



- Unless Otherwise Noted:**
- Barley = Spring for Grain
  - Canola = Spring for Processing
  - Corn = Yellow for Grain
  - Flax = Common for Grain
  - Oats = Spring for Grain
  - Soybeans = Common for Grain
  - Sunflowers = Oil for Grain
  - Wheat = Spring for Grain
  - All fields are non-irrigated
  - Shares are 100% to operator

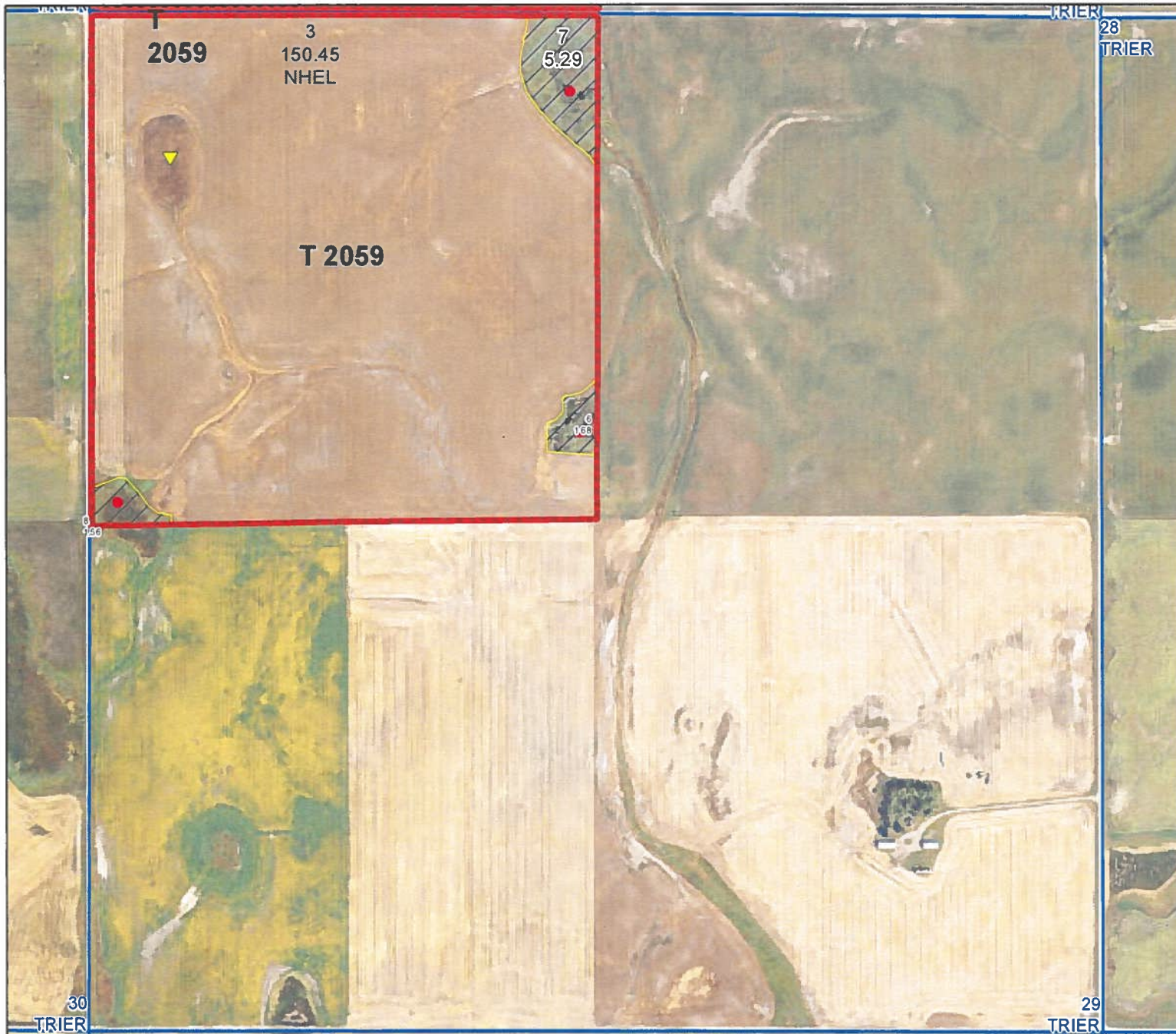
### Common Land Unit

- Tract Boundary
- Non-Cropland
- Cropland
- PLSS

### Wetland Determination Identifiers

- Restricted Use
- ▼ Limited Restrictions
- Exempt from Conservation Compliance Provisions

United States Department of Agriculture (USDA) Farm Service Agency (FSA) maps are for FSA Program administration only. This map does not represent a legal survey or reflect actual ownership; rather it depicts the information provided directly from the producer and/or National Agricultural Imagery Program (NAIP) imagery. The producer accepts the data 'as is' and assumes all risks associated with its use. USDA-FSA assumes no responsibility for actual or consequential damage incurred as a result of any user's reliance on this data outside FSA Programs. Wetland identifiers do not represent the size, shape, or specific determination of the area. Refer to your original determination (CPA-026 and attached maps) for exact boundaries and determinations or contact USDA Natural Resources Conservation Service (NRCS). The imagery displayed on this map was collected in calendar year 2023.



## Farm 1092

**S29 T160N R64W**  
Phy Cnty: Cavalier

2024 Program Year  
Map Created April 01, 2024



- Unless Otherwise Noted:**
- Barley = Spring for Grain
  - Canola = Spring for Processing
  - Corn = Yellow for Grain
  - Flax = Common for Grain
  - Oats = Spring for Grain
  - Soybeans = Common for Grain
  - Sunflowers = Oil for Grain
  - Wheat = Spring for Grain
  - All fields are non-irrigated
  - Shares are 100% to operator

### Common Land Unit

- Tract Boundary
- Non-Cropland
- Cropland
- PLSS

### Wetland Determination Identifiers

- Restricted Use
- ▼ Limited Restrictions
- Exempt from Conservation Compliance Provisions

United States Department of Agriculture (USDA) Farm Service Agency (FSA) maps are for FSA Program administration only. This map does not represent a legal survey or reflect actual ownership; rather it depicts the information provided directly from the producer and/or National Agricultural Imagery Program (NAIP) imagery. The producer accepts the data 'as is' and assumes all risks associated with its use. USDA-FSA assumes no responsibility for actual or consequential damage incurred as a result of any user's reliance on this data outside FSA Programs. Wetland identifiers do not represent the size, shape, or specific determination of the area. Refer to your original determination (CPA-026 and attached maps) for exact boundaries and determinations or contact USDA Natural Resources Conservation Service (NRCS). The imagery displayed on this map was collected in calendar year 2023.



Abbreviated 156 Farm Record

Operator Name :  
 CRP Contract Number(s) : None  
 Recon ID : None  
 Transferred From : None  
 ARCPLC G//F Eligibility : Eligible

Farm Land Data

Farmland	Cropland	DCP Cropland	WBP	EWP	WRP	GRP	Sugarcane	Farm Status	Number Of Tracts
317.67	307.32	307.32	0.00	0.00	0.00	0.00	0.0	Active	1
State Conservation	Other Conservation	Effective DCP Cropland	Double Cropped		CRP	MPL	DCP Ag.Rel. Activity	SOD	
0.00	0.00	307.32	0.00		0.00	0.00	0.00	0.00	

Crop Election Choice

ARC Individual	ARC County	Price Loss Coverage
None	FLAX, CANOL	WHEAT

DCP Crop Data

Crop Name	Base Acres	CCC-505 CRP Reduction Acres	PLC Yield	HIP
Wheat	132.63	0.00	60	
Flax	16.65	0.00	16	
Canola	148.02	0.00	1992	
<b>TOTAL</b>	<b>297.30</b>	<b>0.00</b>		

NOTES

--

Tract Number : 2059

Description : 290/SW20;NW29-160-64  
 FSA Physical Location : NORTH DAKOTA/CAVALIER  
 ANSI Physical Location : NORTH DAKOTA/CAVALIER  
 BIA Unit Range Number :  
 HEL Status : NHEL: No agricultural commodity planted on undetermined fields  
 Wetland Status : Tract does not contain a wetland  
 WL Violations : None  
 Owners :  
 Other Producers : None  
 Recon ID : None

Tract Land Data

Farm Land	Cropland	DCP Cropland	WBP	EWP	WRP	GRP	Sugarcane
317.67	307.32	307.32	0.00	0.00	0.00	0.00	0.0

NORTH DAKOTA  
CAVALIER  
Form: FSA-156EZ



Abbreviated 156 Farm Record

FARM : 1092  
Prepared : 11/4/24 9:26 AM CST  
Crop Year : 2025

Tract 2059 Continued ...

State Conservation	Other Conservation	Effective DCP Cropland	Double Cropped	CRP	MPL	DCP Ag. Rel Activity	SOD
0.00	0.00	307.32	0.00	0.00	0.00	0.00	0.00

DCP Crop Data

Crop Name	Base Acres	CCC-505 CRP Reduction Acres	PLC Yield
Wheat	132.63	0.00	60
Flax	16.65	0.00	16
Canola	148.02	0.00	1992
<b>TOTAL</b>	<b>297.30</b>	<b>0.00</b>	

NOTES

--

*In accordance with Federal civil rights law and U.S. Department of Agriculture (USDA) civil rights regulations and policies, the USDA, its Agencies, offices, and employees, and institutions participating in or administering USDA programs are prohibited from discriminating based on race, color, national origin, religion, sex, gender identity (including gender expression), sexual orientation, disability, age, marital status, family/parental status, income derived from a public assistance program, political beliefs, or reprisal or retaliation for prior civil rights activity, in any program or activity conducted or funded by USDA (not all bases apply to all programs). Remedies and complaint filing deadlines vary by program or incident.*

*Persons with disabilities who require alternative means of communication for program information (e.g., Braille, large print, audiotape, American Sign Language, etc.) should contact the responsible Agency or USDA's TARGET Center at (202) 720-2600 (voice and TTY) or contact USDA through the Federal Relay Service at (800) 877-8339. Additionally, program information may be made available in languages other than English.*

*To file a program discrimination complaint, complete the USDA Program Discrimination Complaint Form, AD-3027, found online at [http://www.ascr.usda.gov/complaint\\_filing\\_cust.html](http://www.ascr.usda.gov/complaint_filing_cust.html) and at any USDA office or write a letter addressed to USDA and provide in the letter all of the information requested in the form. To request a copy of the complaint form, call (866) 632-9992. Submit your completed form or letter to USDA by: (1) mail: U.S. Department of Agriculture Office of the Assistant Secretary for Civil Rights 1400 Independence Avenue, SW Washington, D.C. 20250-9410; (2) fax: (202) 690-7442; or (3) e-mail: [program.intake@usda.gov](mailto:program.intake@usda.gov). USDA is an equal opportunity provider, employer, and lender.*