

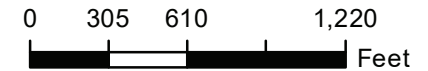
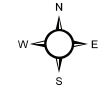
Farm 8160

S7 T152N R65W

Phy Cnty: Benson

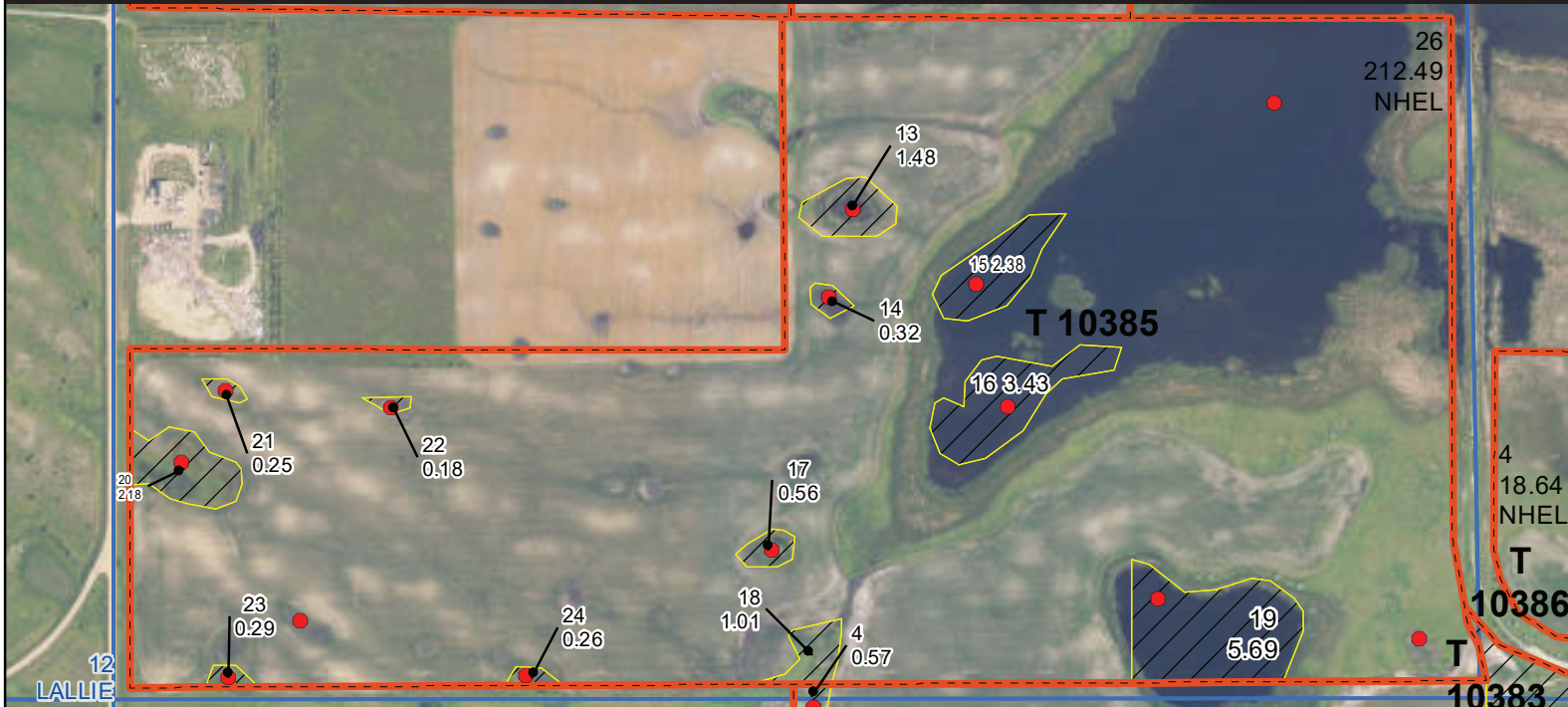
2024 Program Year

Map Created March 30, 2024



Unless Otherwise Noted:

- Barley = Spring for Grain
- Canola = Spring for Processing
- Corn = Yellow for Grain
- Flax = Common for Grain
- Oats = Spring for Grain
- Soybeans = Common for Grain
- Sunflowers = Oil for Grain
- Wheat = Spring for Grain
- All fields are non-irrigated
- Shares are 100% to operator



Common Land Unit

- Tract Boundary
- Non-Cropland
- Cropland
- PLSS

Wetland Determination Identifiers

- Restricted Use
- Limited Restrictions
- Exempt from Conservation
- Compliance Provisions

United States Department of Agriculture (USDA) Farm Service Agency (FSA) maps are for FSA Program administration only. This map does not represent a legal survey or reflect actual ownership; rather it depicts the information provided directly from the producer and/or National Agricultural Imagery Program (NAIP) imagery. The producer accepts the data 'as is' and assumes all risks associated with its use. USDA-FSA assumes no responsibility for actual or consequential damage incurred as a result of any user's reliance on this data outside FSA Programs. Wetland identifiers do not represent the size, shape, or specific determination of the area. Refer to your original determination (CPA-026 and attached maps) for exact boundaries and determinations or contact USDA Natural Resources Conservation Service (NRCS). **The imagery displayed on this map was collected in calendar year 2023.**

Abbreviated 156 Farm Record

Tract Number : 10385
Description : SE; S2SW 7-152-65
FSA Physical Location : NORTH DAKOTA/BENSON
ANSI Physical Location : NORTH DAKOTA/BENSON
BIA Unit Range Number :
HEL Status : NHEL: No agricultural commodity planted on undetermined
Wetland Status fields : Tract contains a wetland or farmed wetland
WL Violations : None
Owners : GOLDEN BEAR FARMS LLP
Other Producers
Recon ID : 38-005-2016-101

Tract Land Data

Farm Land	Cropland	DCP Cropland	WBP	EWP	WRP	GRP	Sugarcane
230.52	212.49	212.49	0.00	0.00	0.00	0.00	0.0
State Conservation	Other Conservation	Effective DCP Cropland	Double Cropped	CRP	MPL	DCP Ag. Rel Activity	SOD
0.00	0.00	212.49	0.00	0.00	0.00	0.00	0.00

DCP Crop Data

Crop Name	Base Acres	CCC-505 CRP Reduction Acres	PLC Yield
Corn	100.82	0.00	97
Soybeans	111.66	0.00	28
TOTAL	212.48	0.00	

NOTES

--