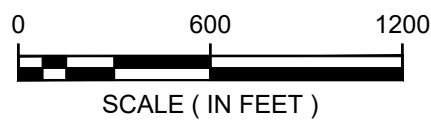
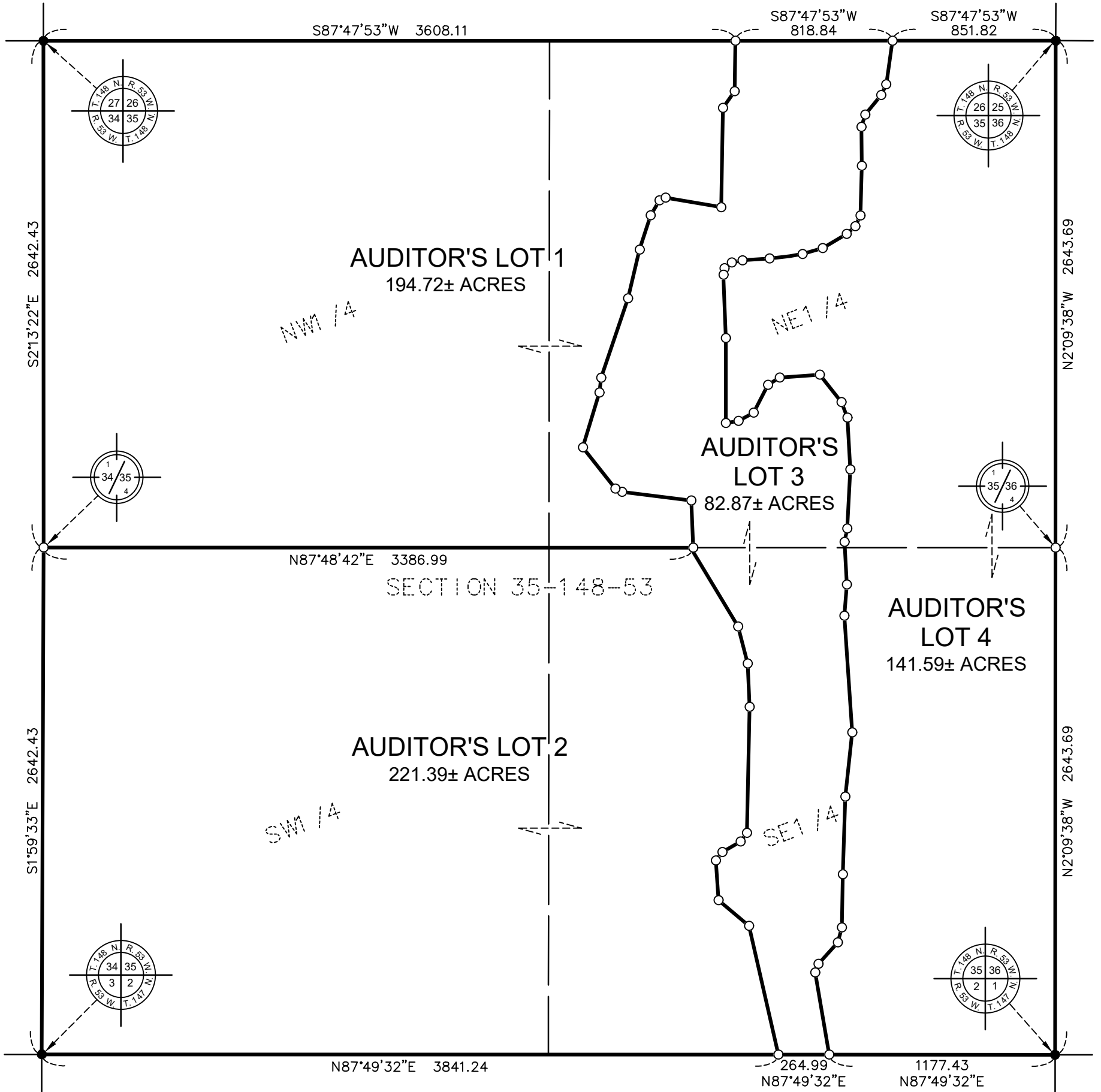


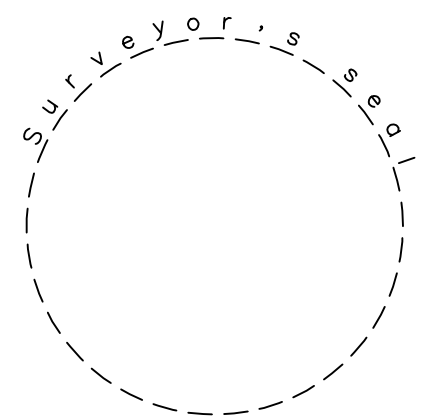
AUDITOR'S LOTS 1, 2, 3 & 4
BEING PART OF THE SECTION 35, TOWNSHIP 148 N., RANGE 53 W.
TRAIL COUNTY, NORTH DAKOTA



ORIENTATION OF THIS BEARING SYSTEM IS BASED ON THE
 NORTH DAKOTA STATE PLANE COORDINATE DATUM

LEGEND

- = AUDITOR'S LOT
- = SECTION LINE
- = QUARTER LINE
- = LOT LINE
- = DENOTES FOUND IRON MONUMENT
- = DENOTES 5/8" X 24" IRON MONUMENT TO BE SET AND MARKED LS-5773



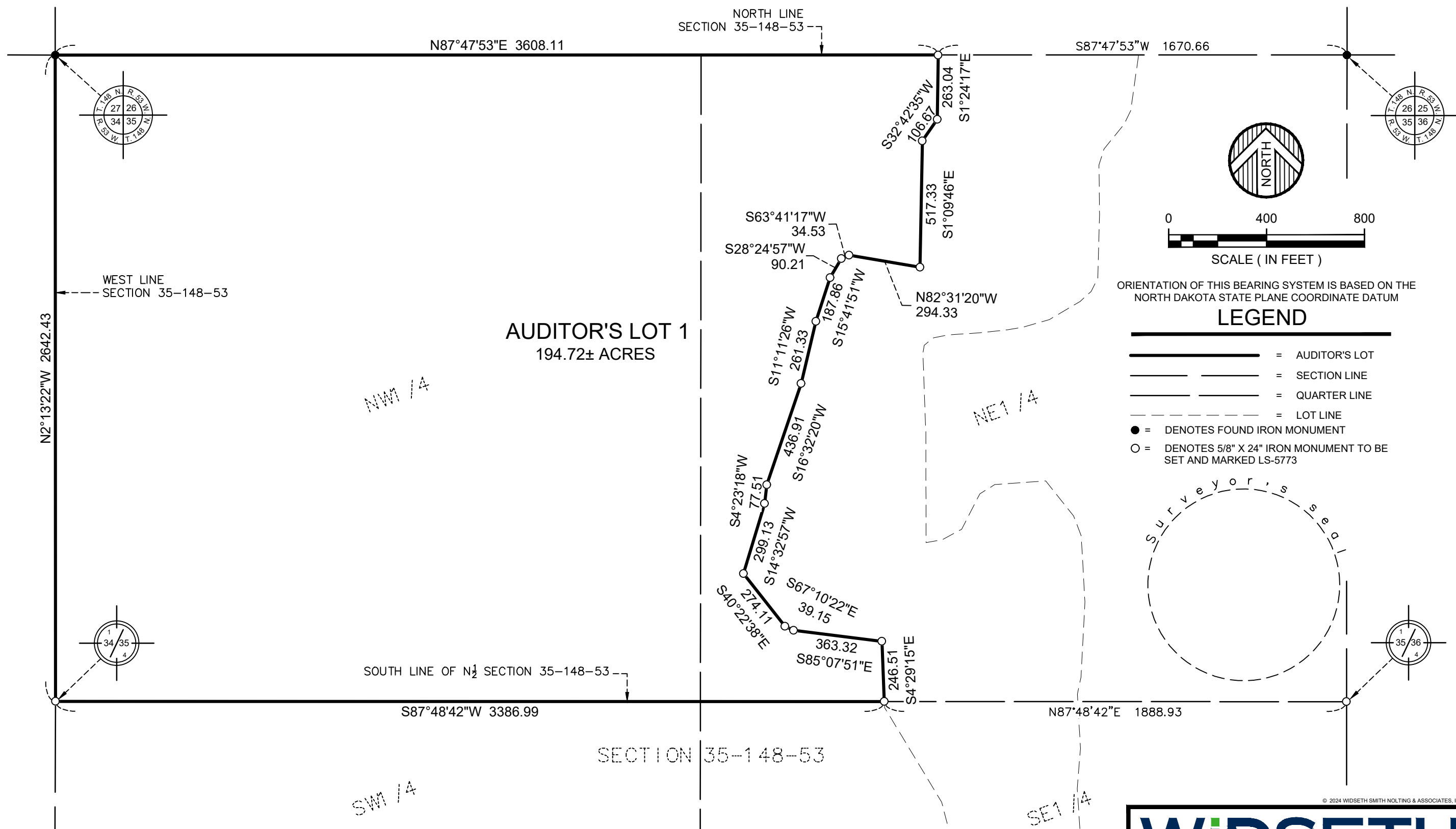
© 2024 WIDSETH SMITH NOLTING & ASSOCIATES, INC.



AUDITOR'S LOTS 1, 2, 3 & 4

BEING PART OF THE SECTION 35, TOWNSHIP 148 N., RANGE 53 W.

TRAIL COUNTY, NORTH DAKOTA



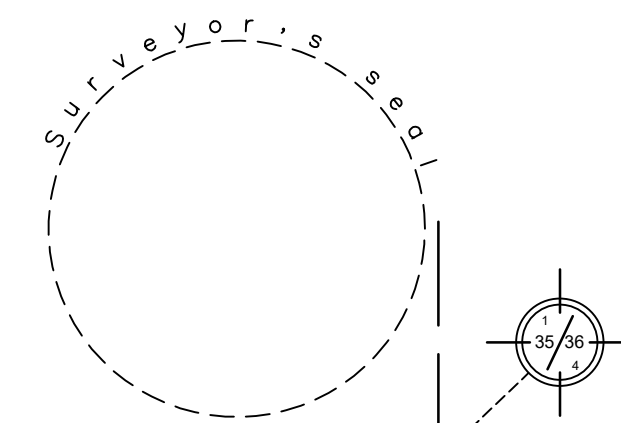
NORTH

0 400 800

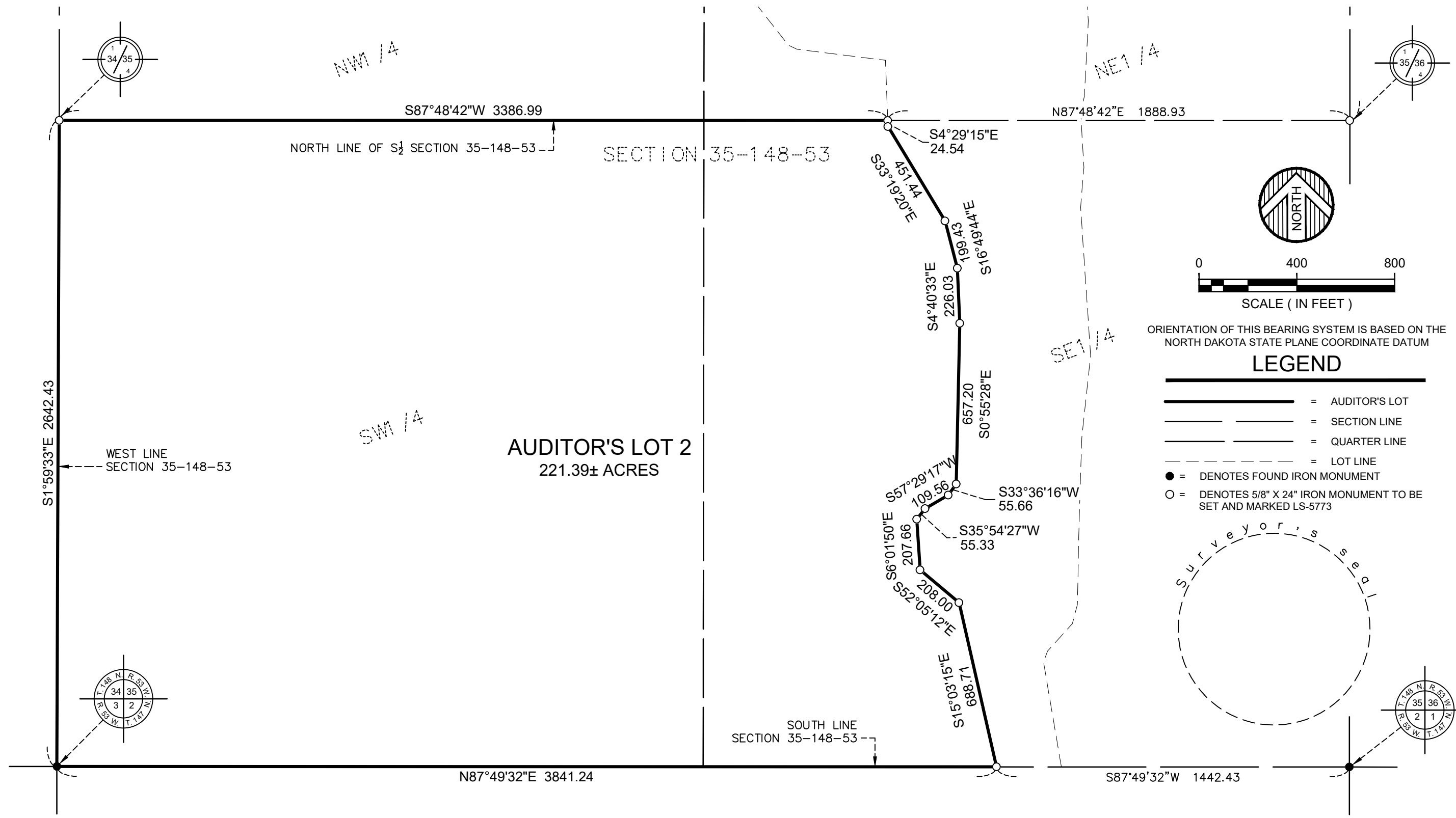
SCALE (IN FEET)

ORIENTATION OF THIS BEARING SYSTEM IS BASED ON THE NORTH DAKOTA STATE PLANE COORDINATE DATUM

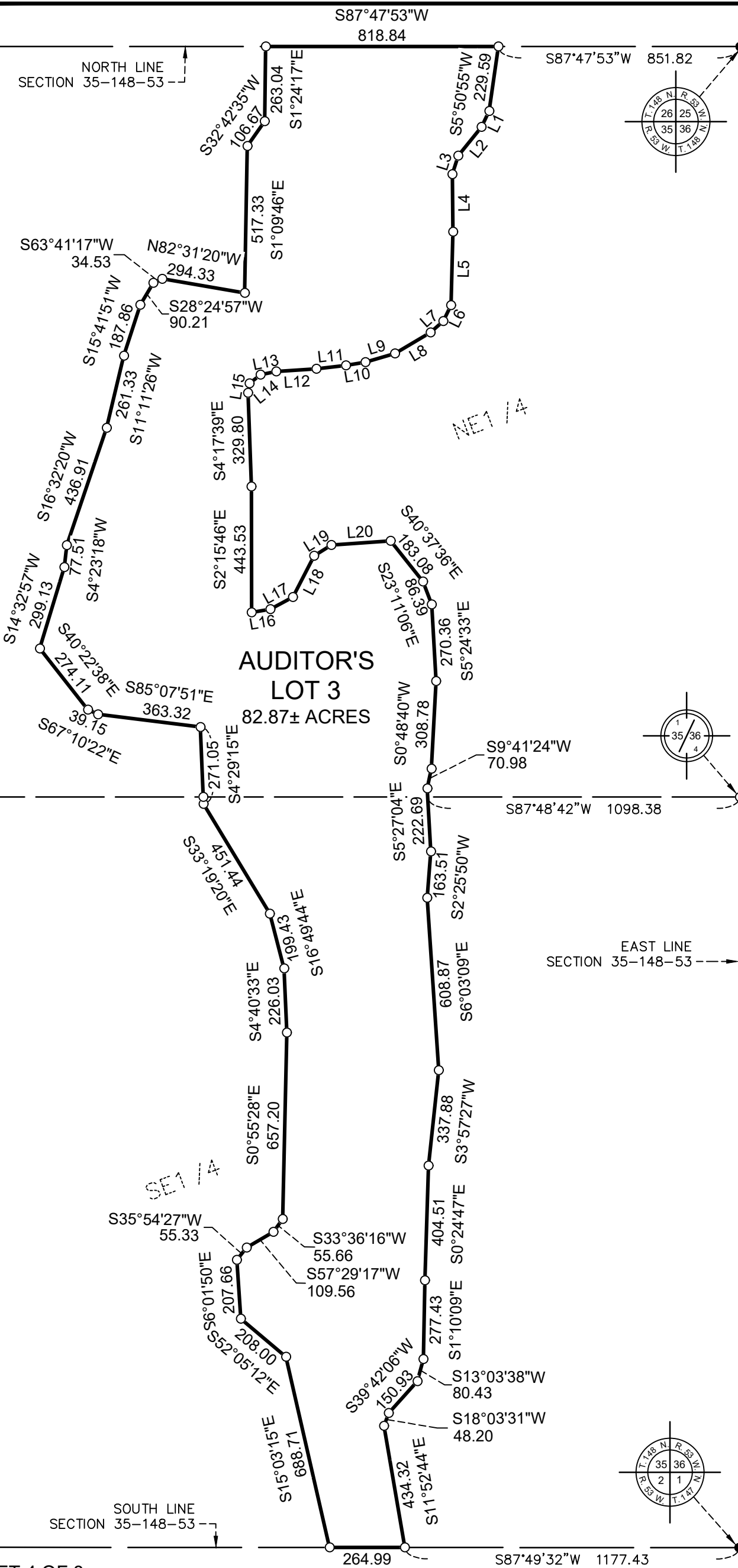
- ### LEGEND
- = AUDITOR'S LOT
 - = SECTION LINE
 - = QUARTER LINE
 - = LOT LINE
 - = DENOTES FOUND IRON MONUMENT
 - = DENOTES 5/8" X 24" IRON MONUMENT TO BE SET AND MARKED LS-5773



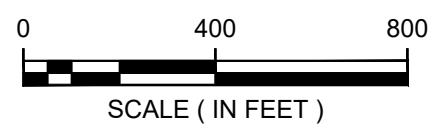
AUDITOR'S LOTS 1, 2, 3 & 4
BEING PART OF THE SECTION 35, TOWNSHIP 148 N., RANGE 53 W.
TRAIL COUNTY, NORTH DAKOTA



AUDITOR'S LOTS 1, 2, 3 & 4 BEING PART OF THE SECTION 35, TOWNSHIP 148 N., RANGE 53 W. TRAIL COUNTY, NORTH DAKOTA



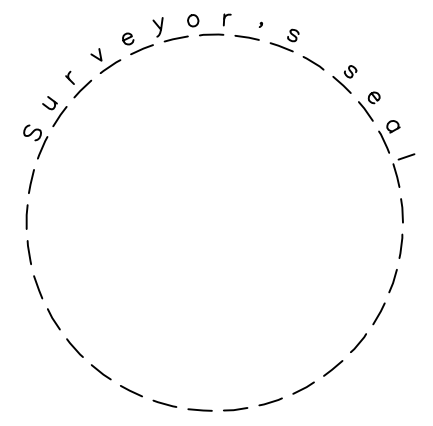
PARCEL LINE DATA		
SEGMENT	LENGTH	DIRECTION
L1	61.85	S23° 31' 56"W
L2	130.74	S36° 48' 25"W
L3	67.98	S15° 28' 04"W
L4	202.94	S2° 53' 31"E
L5	258.93	S0° 40' 02"E
L6	62.26	S24° 02' 09"W
L7	60.28	S45° 58' 35"W
L8	145.43	S57° 09' 22"W
L9	108.63	S71° 29' 38"W
L10	69.48	S78° 20' 31"W
L11	104.22	S81° 19' 37"W
L12	141.69	S83° 51' 57"W
L13	56.84	S76° 23' 24"W
L14	49.13	S49° 15' 43"W
L15	33.95	S6° 56' 20"W
L16	66.99	N78° 11' 46"E
L17	90.29	N59° 21' 48"E
L18	163.41	N25° 01' 24"E
L19	71.54	N56° 02' 34"E
L20	209.04	N83° 44' 06"E



ORIENTATION OF THIS BEARING SYSTEM IS BASED ON THE NORTH DAKOTA STATE PLANE COORDINATE DATUM

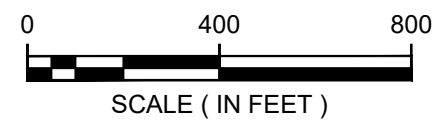
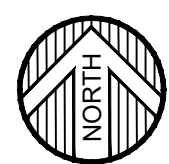
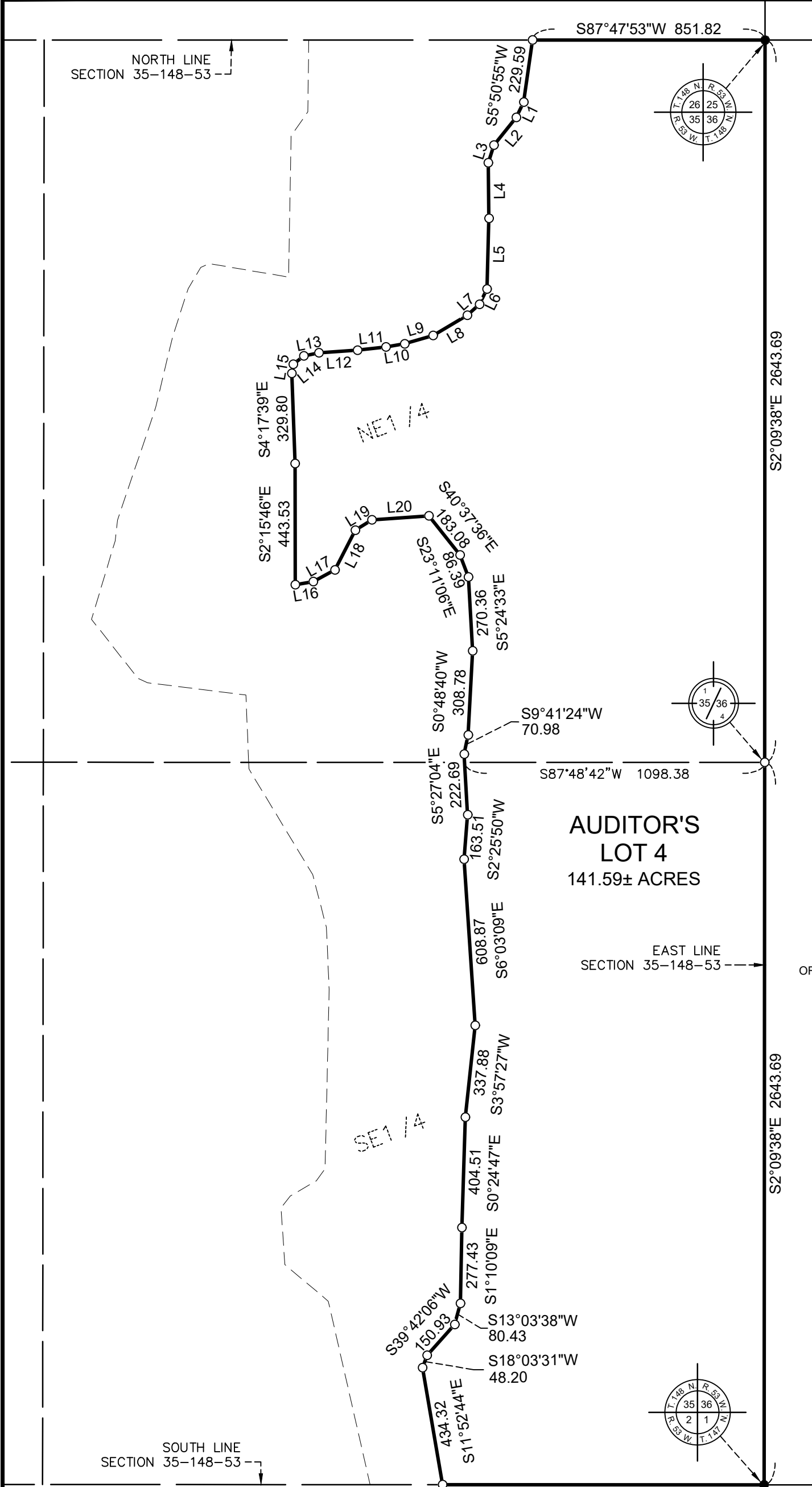
LEGEND

- = AUDITOR'S LOT
- = SECTION LINE
- = QUARTER LINE
- = LOT LINE
- = DENOTES FOUND IRON MONUMENT
- = DENOTES 5/8" X 24" IRON MONUMENT TO BE SET AND MARKED LS-5773



AUDITOR'S LOTS 1, 2, 3 & 4 BEING PART OF THE SECTION 35, TOWNSHIP 148 N., RANGE 53 W. TRAIL COUNTY, NORTH DAKOTA

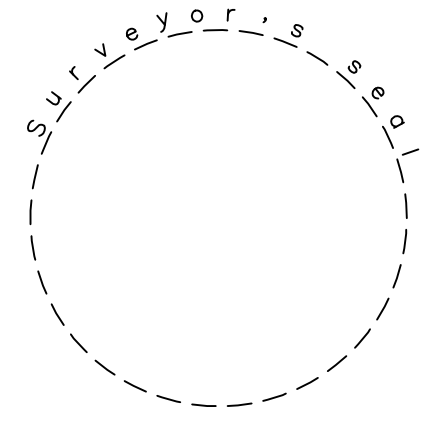
PARCEL LINE DATA		
SEGMENT	LENGTH	DIRECTION
L1	61.85	S23° 31' 56"W
L2	130.74	S36° 48' 25"W
L3	67.98	S15° 28' 04"W
L4	202.94	S2° 53' 31"E
L5	258.93	S0° 40' 02"E
L6	62.26	S24° 02' 09"W
L7	60.28	S45° 58' 35"W
L8	145.43	S57° 09' 22"W
L9	108.63	S71° 29' 38"W
L10	69.48	S78° 20' 31"W
L11	104.22	S81° 19' 37"W
L12	141.69	S83° 51' 57"W
L13	56.84	S76° 23' 24"W
L14	49.13	S49° 15' 43"W
L15	33.95	S6° 56' 20"W
L16	66.99	N78° 11' 46"E
L17	90.29	N59° 21' 48"E
L18	163.41	N25° 01' 24"E
L19	71.54	N56° 02' 34"E
L20	209.04	N83° 44' 06"E



ORIENTATION OF THIS BEARING SYSTEM IS BASED ON THE NORTH DAKOTA STATE PLANE COORDINATE DATUM

LEGEND

- = AUDITOR'S LOT
- = SECTION LINE
- = QUARTER LINE
- = LOT LINE
- = DENOTES FOUND IRON MONUMENT
- = DENOTES 5/8" X 24" IRON MONUMENT TO BE SET AND MARKED LS-5773



**AUDITOR'S LOTS 1, 2, 3 & 4
BEING PART OF THE SECTION 35, TOWNSHIP 148 N., RANGE 53 W.
TRAILL COUNTY, NORTH DAKOTA**

LEGAL DESCRIPTION AUDITOR'S LOT 1 OF SECTION 35, TWP. 148 N., R. 53 W.

A tract of land being all that part of the North Half of Section 35, Township 148 North, Range 53 West of the Fifth Principal Meridian, Traill County, North Dakota, which lies to the West of the following describe line:

Commencing at the northeast corner of said Section 35; thence South 87 degrees 47 minutes 53 seconds West, assumed bearing, along the north line of said Section 35, a distance of 1670.66 feet to the point of beginning of the line to be described; thence South 1 degree 24 minutes 17 seconds East 263.04 feet; thence South 32 degrees 42 minutes 35 seconds West 106.67 feet; thence South 1 degree 09 minutes 46 seconds East 517.33 feet; thence North 82 degrees 31 minutes 20 seconds West 294.33 feet; thence South 63 degrees 41 minutes 17 seconds West 34.53 feet; thence South 28 degrees 24 minutes 57 seconds West 90.21 feet; thence South 15 degrees 41 minutes 51 seconds West 187.86 feet; thence South 11 degrees 11 minutes 26 seconds West 261.33 feet; thence South 16 degrees 32 minutes 20 seconds West 436.91 feet; thence South 4 degrees 23 minutes 18 seconds West 77.51 feet; thence South 14 degrees 32 minutes 57 seconds West 299.13 feet; thence South 40 degrees 22 minutes 38 seconds East 274.11 feet; thence South 67 degrees 10 minutes 22 seconds East 39.15 feet; thence South 85 degrees 07 minutes 51 seconds East 363.32 feet; thence South 4 degrees 29 minutes 15 seconds East 246.51 feet to a point on the south line of said North Half of Section 35, said point being 1888.93 feet distant from the southeast corner of said North Half of Section 35, and said line there terminating.

The tract described herein contains 194.72 acres, more or less, and is subject to easements, restrictions, or conveyances of record, if any.

LEGAL DESCRIPTION AUDITOR'S LOT 2 OF SECTION 35, TWP. 148 N., R. 53 W.

A tract of land being all that part of the South Half of Section 35, Township 148 North, Range 53 West of the Fifth Principal Meridian, Traill County, North Dakota, which lies to the West of the following describe line:

Commencing at the northeast corner of said South Half of Section 35; thence South 87 degrees 48 minutes 42 seconds West, assumed bearing, along the north line of said South Half of Section 35, a distance of 1888.93 feet to the point of beginning of the line to be described; thence South 4 degrees 29 minutes 15 seconds East 24.54 feet; thence South 33 degrees 19 minutes 20 seconds East 451.44 feet; thence South 16 degrees 49 minutes 44 seconds East 199.43 feet; thence South 4 degrees 40 minutes 33 seconds East 226.03 feet; thence South 0 degrees 55 minutes 28 seconds East 657.20 feet; thence South 33 degrees 36 minutes 16 seconds West 55.66 feet; thence South 57 degrees 29 minutes 17 seconds West 109.56 feet; thence South 35 degrees 54 minutes 27 seconds West 55.33 feet; thence South 6 degrees 01 minute 50 seconds East 207.66 feet; thence South 52 degrees 05 minutes 12 seconds East 208.00 feet; thence South 15 degrees 03 minutes 15 seconds East 688.71 feet to a point on the south line of said Section 35, said point being 1442.43 feet distant from the southeast corner of said Section 35, and said line there terminating.

The tract described herein contains 221.39 acres, more or less, and is subject to easements, restrictions, or conveyances of record, if any.

LEGAL DESCRIPTION AUDITOR'S LOT 3 OF SECTION 35, TWP. 148 N., R. 53 W.

A tract of land being all that part of the East Half of Section 35, Township 148 North, Range 53 West of the Fifth Principal Meridian, Traill County, North Dakota, which lies between the following described lines:

Westerly Boundary:

Commencing at the northeast corner of said Section 35; thence South 87 degrees 47 minutes 53 seconds West, assumed bearing, along the north line of said Section 35, a distance of 1670.66 feet to the point of beginning of the line to be described; thence South 1 degree 24 minutes 17 seconds East 263.04 feet; thence South 32 degrees 42 minutes 35 seconds West 106.67 feet; thence South 1 degree 09 minutes 46 seconds East 517.33 feet; thence North 82 degrees 31 minutes 20 seconds West 294.33 feet; thence South 63 degrees 41 minutes 17 seconds West 34.53 feet; thence South 28 degrees 24 minutes 57 seconds West 90.21 feet; thence South 15 degrees 41 minutes 51 seconds West 187.86 feet; thence South 11 degrees 11 minutes 26 seconds West 261.33 feet; thence South 16 degrees 32 minutes 20 seconds West 436.91 feet; thence South 4 degrees 23 minutes 18 seconds West 77.51 feet; thence South 14 degrees 32 minutes 57 seconds West 299.13 feet; thence South 40 degrees 22 minutes 38 seconds East 274.11 feet; thence South 67 degrees 10 minutes 22 seconds East 39.15 feet; thence South 85 degrees 07 minutes 51 seconds East 363.32 feet; thence South 4 degrees 29 minutes 15 seconds East 271.05 feet; thence South 33 degrees 19 minutes 20 seconds East 451.44 feet; thence South 16 degrees 49 minutes 44 seconds East 199.43 feet; thence South 4 degrees 40 minutes 33 seconds East 226.03 feet; thence South 0 degrees 55 minutes 28 seconds East 657.20 feet; thence South 33 degrees 36 minutes 16 seconds West 55.66 feet; thence South 57 degrees 29 minutes 17 seconds West 109.56 feet; thence South 35 degrees 54 minutes 27 seconds West 55.33 feet; thence South 6 degrees 01 minute 50 seconds East 207.66 feet; thence South 52 degrees 05 minutes 12 seconds East 208.00 feet; thence South 15 degrees 03 minutes 15 seconds East 688.71 feet to a point on the south line of said Section 35, said point being 1442.43 feet distant from the southeast corner of said Section 35, and said line there terminating.

Easterly Boundary:

Commencing at the northeast corner of said Section 35; thence South 87 degrees 47 minutes 53 seconds West, assumed bearing, along the north line of said Section 35, a distance of 851.82 feet to the point of beginning of the line to be described; thence South 5 degrees 50 minutes 55 seconds West 229.59 feet; thence South 23 degrees 31 minutes 56 seconds West 61.85 feet; thence South 36 degrees 48 minutes 25 seconds West 130.74 feet; thence South 15 degrees 28 minutes 04 seconds West 67.98 feet; thence South 2 degrees 53 minutes 31 seconds East 202.94 feet; thence South 0 degrees 40 minutes 02 seconds East 258.93 feet; thence South 24 degrees 02 minutes 09 seconds West 62.26 feet; thence South 45 degrees 58 minutes 35 seconds West 60.28 feet; thence South 57 degrees 09 minutes 22 seconds West 145.43 feet; thence South 71 degrees 29 minutes 38 seconds West 108.63 feet; thence South 78 degrees 20 minutes 31 seconds West 69.48 feet; thence South 81 degrees 19 minutes 37 seconds West 104.22 feet; thence South 83 degrees 51 minutes 57 seconds West 141.69 feet; thence South 76 degrees 23 minutes 24 seconds West 56.84 feet; thence South 49 degrees 15 minutes 43 seconds West 49.13 feet; thence South 6 degrees 56 minutes 20 seconds West 33.95 feet; thence South 4 degrees 17 minutes 39 seconds East 329.80 feet; thence South 2 degrees 15 minutes 46 seconds East 443.53 feet; thence North 78 degrees 11 minutes 46 seconds East 66.99 feet; thence North 59 degrees 21 minutes 48 seconds East 90.29 feet; thence North 25 degrees 01 minute 24 seconds East 163.41 feet; thence North 56 degrees 02 minutes 34 seconds East 71.54 feet; thence North 83 degrees 44 minutes 06 seconds East 209.04 feet; thence South 40 degrees 37 minutes 36 seconds East 183.08 feet; thence South 23 degrees 11 minutes 06 seconds East 86.39 feet; thence South 5 degrees 24 minutes 33 seconds East 270.36 feet; thence South 0 degrees 48 minutes 40 seconds West 308.78 feet; thence South 9 degrees 41 minutes 24 seconds West 70.98 feet; thence South 5 degrees 27 minutes 04 seconds East 222.69 feet; thence South 2 degrees 25 minutes 50 seconds West 163.51 feet; thence South 6 degrees 03 minutes 09 seconds East 608.87 feet; thence South 3 degrees 57 minutes 27 seconds West 337.88 feet; thence South 0 degrees 24 minutes 47 seconds East 404.51 feet; thence South 1 degree 10 minutes 09 seconds East 277.43 feet; thence South 13 degrees 03 minutes 38 seconds West 80.43 feet; thence South 39 degrees 42 minutes 06 seconds West 150.93 feet; thence South 18 degrees 03 minutes 31 seconds West 48.20 feet; thence South 11 degrees 52 minutes 44 seconds East 434.32 feet to a point on the south line of said Section 35, said point being 1177.44 feet distant from the southeast corner of said Section 35, and said line there terminating.

The tract described herein contains 82.87 acres, more or less, and is subject to easements, restrictions, or conveyances of record, if any.

© 2024 WIDSETH SMITH NOLTING & ASSOCIATES, INC.



**AUDITOR'S LOTS 1, 2, 3 & 4
BEING PART OF THE SECTION 35, TOWNSHIP 148 N., RANGE 53 W.
TRAILL COUNTY, NORTH DAKOTA**

LEGAL DESCRIPTION AUDITOR'S LOT 4 OF SECTION 35, TWP. 148 N., R. 53 W.

A tract of land being all that part of the East Half of Section 35, Township 148 North, Range 53 West of the Fifth Principal Meridian, Traill County, North Dakota, which lies to the East of the following described line:

Commencing at the northeast corner of said Section 35; thence South 87 degrees 47 minutes 53 seconds West, assumed bearing, along the north line of said Section 35, a distance of 851.82 feet to the point of beginning of the line to be described; thence South 5 degrees 50 minutes 55 seconds West 229.59 feet; thence South 23 degrees 31 minutes 56 seconds West 61.85 feet; thence South 36 degrees 48 minutes 25 seconds West 130.74 feet; thence South 15 degrees 28 minutes 04 seconds West 67.98 feet; thence South 2 degrees 53 minutes 31 seconds East 202.94 feet; thence South 0 degrees 40 minutes 02 seconds East 258.93 feet; thence South 24 degrees 02 minutes 09 seconds West 62.26 feet; thence South 45 degrees 58 minutes 35 seconds West 60.28 feet; thence South 57 degrees 09 minutes 22 seconds West 145.43 feet; thence South 71 degrees 29 minutes 38 seconds West 108.63 feet; thence South 78 degrees 20 minutes 31 seconds West 69.48 feet; thence South 81 degrees 19 minutes 37 seconds West 104.22 feet; thence South 83 degrees 51 minutes 57 seconds West 141.69 feet; thence South 76 degrees 23 minutes 24 seconds West 56.84 feet; thence South 49 degrees 15 minutes 43 seconds West 49.13 feet; thence South 6 degrees 56 minutes 20 seconds West 33.95 feet; thence South 4 degrees 17 minutes 39 seconds East 329.80 feet; thence South 2 degrees 15 minutes 46 seconds East 443.53 feet; thence North 78 degrees 11 minutes 46 seconds East 66.99 feet; thence North 59 degrees 21 minutes 48 seconds East 90.29 feet; thence North 25 degrees 01 minute 24 seconds East 163.41 feet; thence North 56 degrees 02 minutes 34 seconds East 71.54 feet; thence North 83 degrees 44 minutes 06 seconds East 209.04 feet; thence South 40 degrees 37 minutes 36 seconds East 183.08 feet; thence South 23 degrees 11 minutes 06 seconds East 86.39 feet; thence South 5 degrees 24 minutes 33 seconds East 270.36 feet; thence South 0 degrees 48 minutes 40 seconds West 308.78 feet; thence South 9 degrees 41 minutes 24 seconds West 70.98 feet; thence South 5 degrees 27 minutes 04 seconds East 222.69 feet; thence South 2 degrees 25 minutes 50 seconds West 163.51 feet; thence South 6 degrees 03 minutes 09 seconds East 608.87 feet; thence South 3 degrees 57 minutes 27 seconds West 337.88 feet; thence South 0 degrees 24 minutes 47 seconds East 404.51 feet; thence South 1 degree 10 minutes 09 seconds East 277.43 feet; thence South 13 degrees 03 minutes 38 seconds West 80.43 feet; thence South 39 degrees 42 minutes 06 seconds West 150.93 feet; thence South 18 degrees 03 minutes 31 seconds West 48.20 feet; thence South 11 degrees 52 minutes 44 seconds East 434.32 feet to a point on the south line of said Section 35, said point being 1177.44 feet distant from the southeast corner of said Section 35, and said line there terminating.

The tract described herein contains 141.59 acres, more or less, and is subject to easements, restrictions, or conveyances of record, if any.

SURVEYOR'S CERTIFICATE

I, Christopher D. Jordheim, a Professional Land Surveyor in the State of North Dakota, do hereby certify that at the request of the owners shown hereon, made the within and foregoing plat and description of the land as herein described and that the lots, distances, area and location as indicated on said plat and contained in said description are true and correct to the best of my knowledge and belief.

Christopher D. Jordheim, PLS LS-5773

STATE OF NORTH DAKOTA)
COUNTY OF GRAND FORKS)

Subscribed and sworn to before me this ____ day of _____, 2024.

Notary Public
My commission expires _____, _____.

