

150.39 Acres • Rolette County, ND

PRICE: \$315,000

LEGAL

SE¼ 20-162-69

FSA CROP ACRES

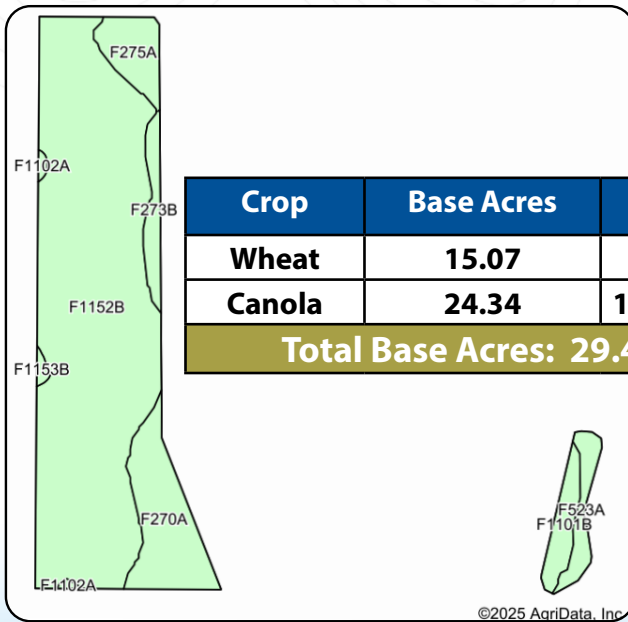
39.5 +/-

PASTURE ACRES

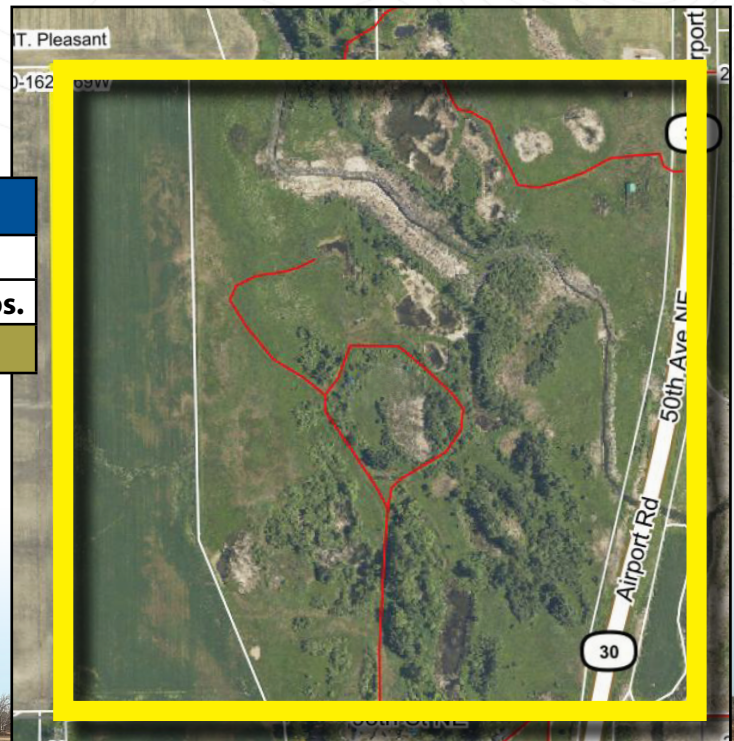
106.93 +/-

Property Note

This property features nearly 107 +/- acres of good pasture and with water and good 4 strand barbed wire fencing. The 39 +/- acres of cropland features a Soil Productivity Index (SPI) of 77. There are no easements and gravel and minerals are included.



Crop	Base Acres	Yield
Wheat	15.07	54 bu.
Canola	24.34	1,757 lbs.
Total Base Acres: 29.41		



Code	Soil Description	Acres	Percent of field	Non-Irr Class *c	Productivity Index
F1152B	Balaton-Souris-Svea loams, 0 to 4 percent slopes	28.77	72.9%	Ile	77
F270A	Arvilla sandy loam, 0 to 2 percent slopes	4.60	11.6%	IIle	41
F275A	Renshaw loam, 0 to 2 percent slopes	1.95	4.9%	IIle	42
F1101B	Hamerly-Wyard loams, 0 to 4 percent slopes	1.33	3.4%	Ile	73
F523A	Low-Fluvaquents, channeled complex, 0 to 2 percent slopes, frequently flooded	1.26	3.2%	VIw	21
F273B	Sioux-Arvilla complex, 2 to 6 percent slopes	1.26	3.2%	VIIs	29
F1102A	Hamerly-Wyard-Tonka complex, 0 to 3 percent slopes	0.17	0.4%	Ile	72
F1153B	Souris-Balaton-Svea loams, 0 to 4 percent slope	0.16	0.4%	Ile	82
Weighted Average					67.6

