

- Tract Boundary
- PLSS
- Noncropland
- Cropland

Wetland Determination Identifiers

- Restricted Use
- ▼ Limited Restrictions
- Exempt from Conservation
- Compliance Provisions

Unless Otherwise Noted:
 Barley = Spring for Grain Soybeans = Common for Grain
 Canola = Spring for Processing Sunflowers = Oil for Grain
 Corn = Yellow for Grain Wheat = Spring for Grain
 Flax = Common for Grain All fields are non-irrigated
 Oats = Spring for Grain Shares are 100% to operator

2026 Program Year
 Phy. County: Dickey
 2025 imagery
S31 T132N R66W



United States Department of Agriculture (USDA) Farm Service Agency (FSA) maps are for FSA Program administration only. This map does not represent a legal survey or reflect actual ownership; rather it depicts the information provided directly from the producer and/or National Agricultural Imagery Program (NAIP) imagery. The producer accepts the data 'as is' and assumes all risks associated with its use. USDA-FSA assumes no responsibility for actual or consequential damage incurred as a result of any user's reliance on this data outside FSA Programs. Wetland identifiers do not represent the size, shape, or specific determination of the area. Refer to your original determination (CPA-026 and attached maps) for exact boundaries and determinations or contact USDA Natural Resources Conservation Service (NRCS). USDA is an equal opportunity provider, employer, and lender.
 Map Created 03/26/2026



Stutsman County, ND

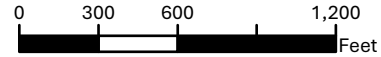
Farm 5721

S29 T138N R67W

Phy. Cnty: Stutsman

2025 Program Year

2023 imagery
Map Created 04/15/2025



Unless Otherwise Noted:

- Barley = Spring for Grain
- Canola = Spring for Processing
- Corn = Yellow for Grain
- Flax = Common for Grain
- Oats = Spring for Grain
- Soybeans = Common for Grain
- Sunflowers = Oil for Grain
- Wheat = Spring for Grain
- All fields are non-irrigated
- Shares are 100% to operator

- Tract Boundary
- Noncropland
- Cropland
- PLSS

Wetland Determination Identifiers

- Restricted Use
- Limited Restrictions
- Exempt from
- Conservation

United States Department of Agriculture (USDA) Farm Service Agency (FSA) maps are for FSA Program administration only. This map does not represent a legal survey or reflect actual ownership; rather it depicts the information provided directly from the producer and/or National Agricultural Imagery Program (NAIP) imagery. The producer accepts the data 'as is' and assumes all risks associated with its use. USDA-FSA assumes no responsibility for actual or consequential damage incurred as a result of any user's reliance on this data outside FSA Programs. Wetland identifiers do not represent the size, shape, or specific determination of the area. Refer to your original determination (CPA-026 and attached maps) for exact boundaries and determinations or contact USDA NRCS. USDA is an equal opportunity provider, employer, and lender.



Stutsman County, ND

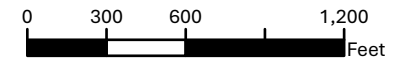
Farm 5721

S28 T138N R67W

Phy. Cnty: Stutsman

2025 Program Year

2023 imagery
Map Created 04/15/2025



Unless Otherwise Noted:

- Barley = Spring for Grain
- Canola = Spring for Processing
- Corn = Yellow for Grain
- Flax = Common for Grain
- Oats = Spring for Grain
- Soybeans = Common for Grain
- Sunflowers = Oil for Grain
- Wheat = Spring for Grain
- All fields are non-irrigated
- Shares are 100% to operator



Tract Boundary

Noncropland

Cropland

PLSS

Wetland Determination Identifiers

- Restricted Use
- Limited Restrictions
- Conservation

Compliance Provisions

Stutsman County, ND

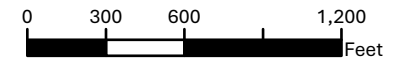
Farm 5721

S7 T137N R66W

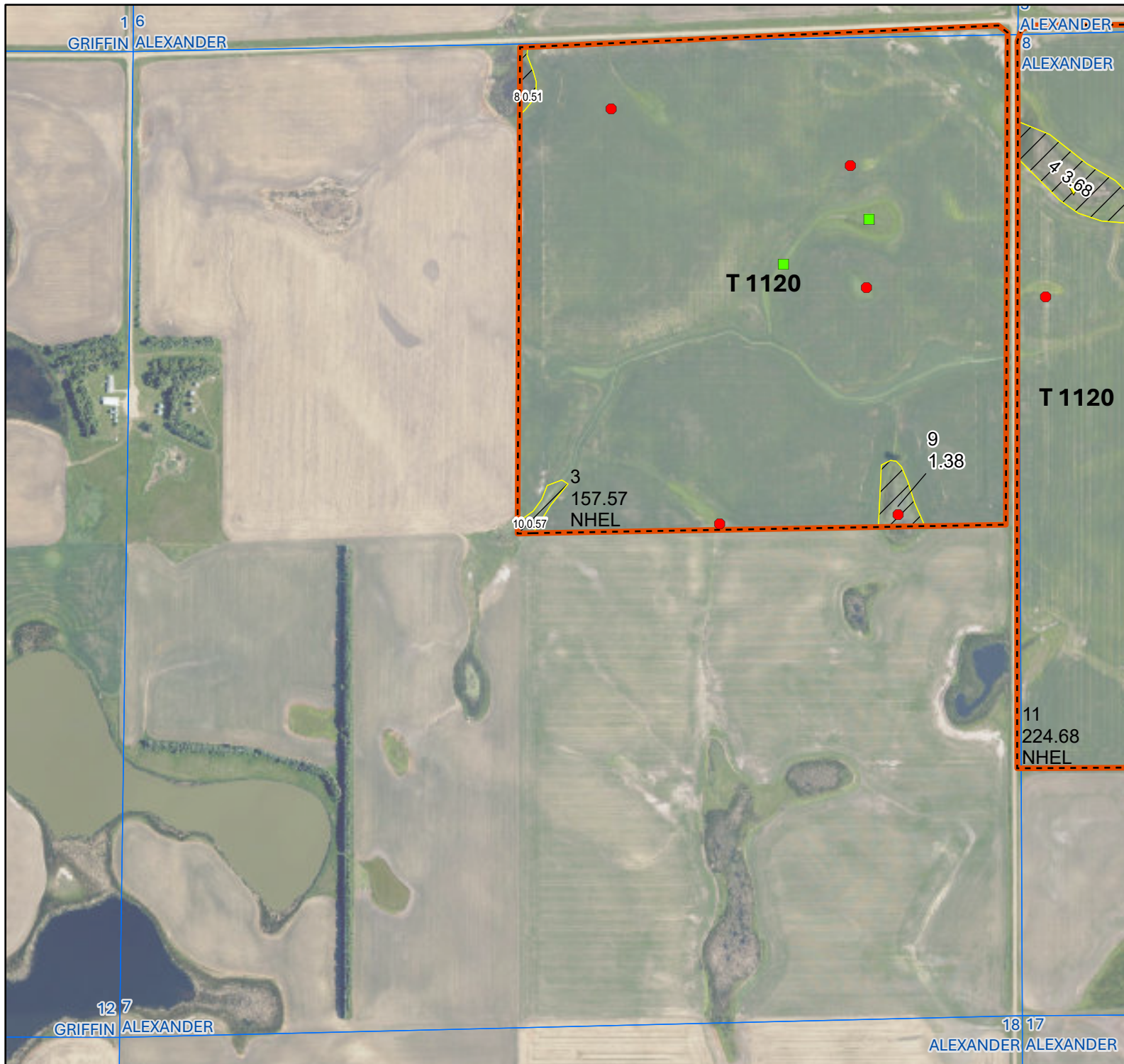
Phy. Cnty: Stutsman

2025 Program Year

2023 imagery
Map Created 04/15/2025



- Unless Otherwise Noted:**
- Barley = Spring for Grain
 - Canola = Spring for Processing
 - Corn = Yellow for Grain
 - Flax = Common for Grain
 - Oats = Spring for Grain
 - Soybeans = Common for Grain
 - Sunflowers = Oil for Grain
 - Wheat = Spring for Grain
- All fields are non-irrigated
Shares are 100% to operator



- Tract Boundary
- Noncropland
- Cropland
- PLSS

- Wetland Determination Identifiers**
- Restricted Use
 - Limited Restrictions
 - Exempt from Conservation Compliance Provisions

United States Department of Agriculture (USDA) Farm Service Agency (FSA) maps are for FSA Program administration only. This map does not represent a legal survey or reflect actual ownership; rather it depicts the information provided directly from the producer and/or National Agricultural Imagery Program (NAIP) imagery. The producer accepts the data 'as is' and assumes all risks associated with its use. USDA-FSA assumes no responsibility for actual or consequential damage incurred as a result of any user's reliance on this data outside FSA Programs. Wetland identifiers do not represent the size, shape, or specific determination of the area. Refer to your original determination (CPA-026 and attached maps) for exact boundaries and determinations or contact USDA NRCS. USDA is an equal opportunity provider, employer, and lender.



Stutsman County, ND

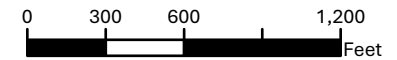
Farm 5721

S8 T137N R66W

Phy. Cnty: Stutsman

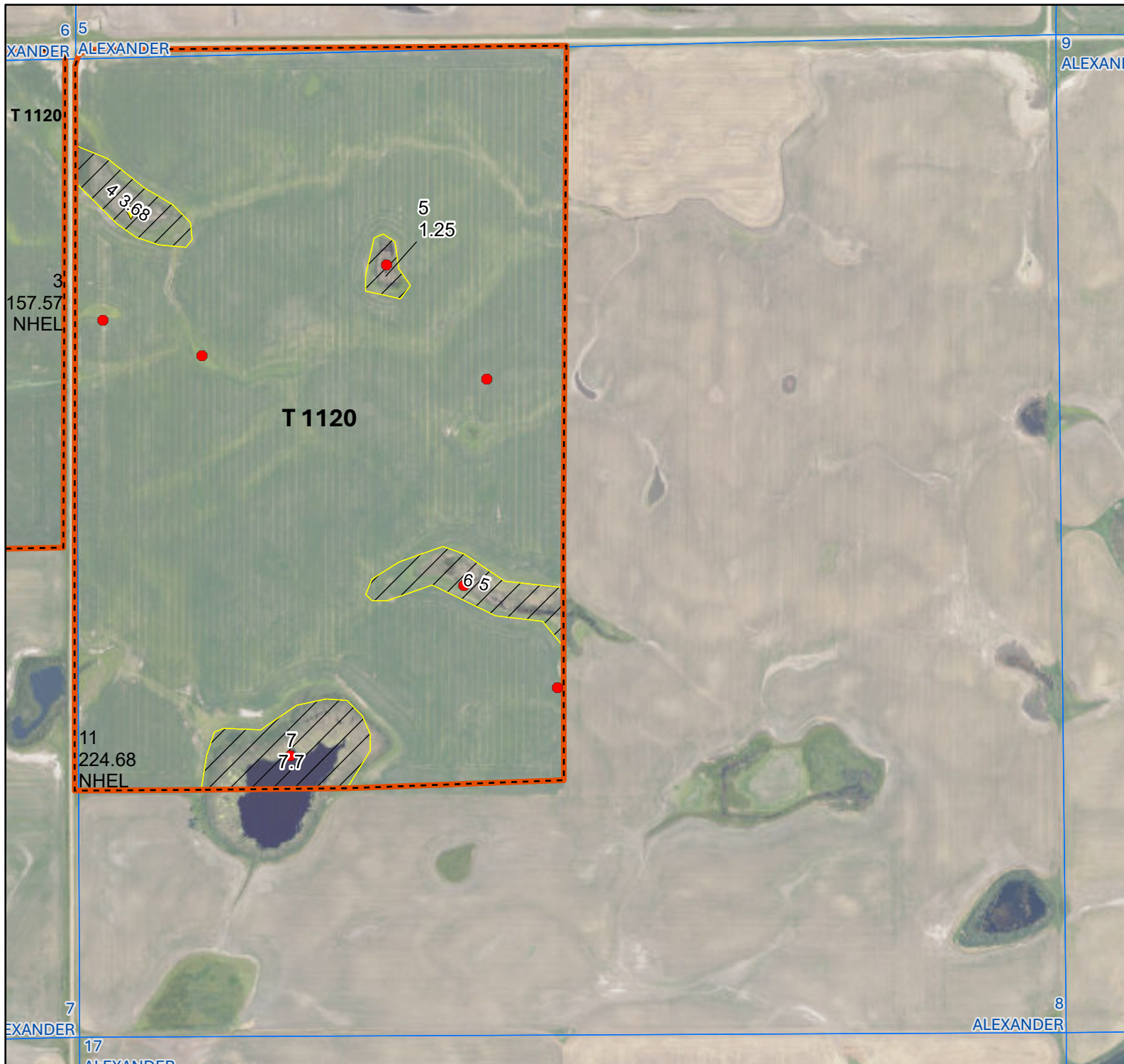
2025 Program Year

2023 imagery
Map Created 04/15/2025



Unless Otherwise Noted:

- Barley = Spring for Grain
- Canola = Spring for Processing
- Corn = Yellow for Grain
- Flax = Common for Grain
- Oats = Spring for Grain
- Soybeans = Common for Grain
- Sunflowers = Oil for Grain
- Wheat = Spring for Grain
- All fields are non-irrigated
- Shares are 100% to operator



Tract Boundary

Noncropland

Cropland

PLSS

Wetland Determination Identifiers

- Restricted Use
- Limited Restrictions
- Exempt from
- Conservation

Compliance Provisions



Stutsman County, ND

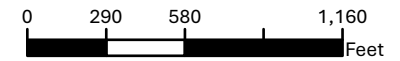
Farm 5721

S25 T137N R67W

Phy. Cnty: Stutsman

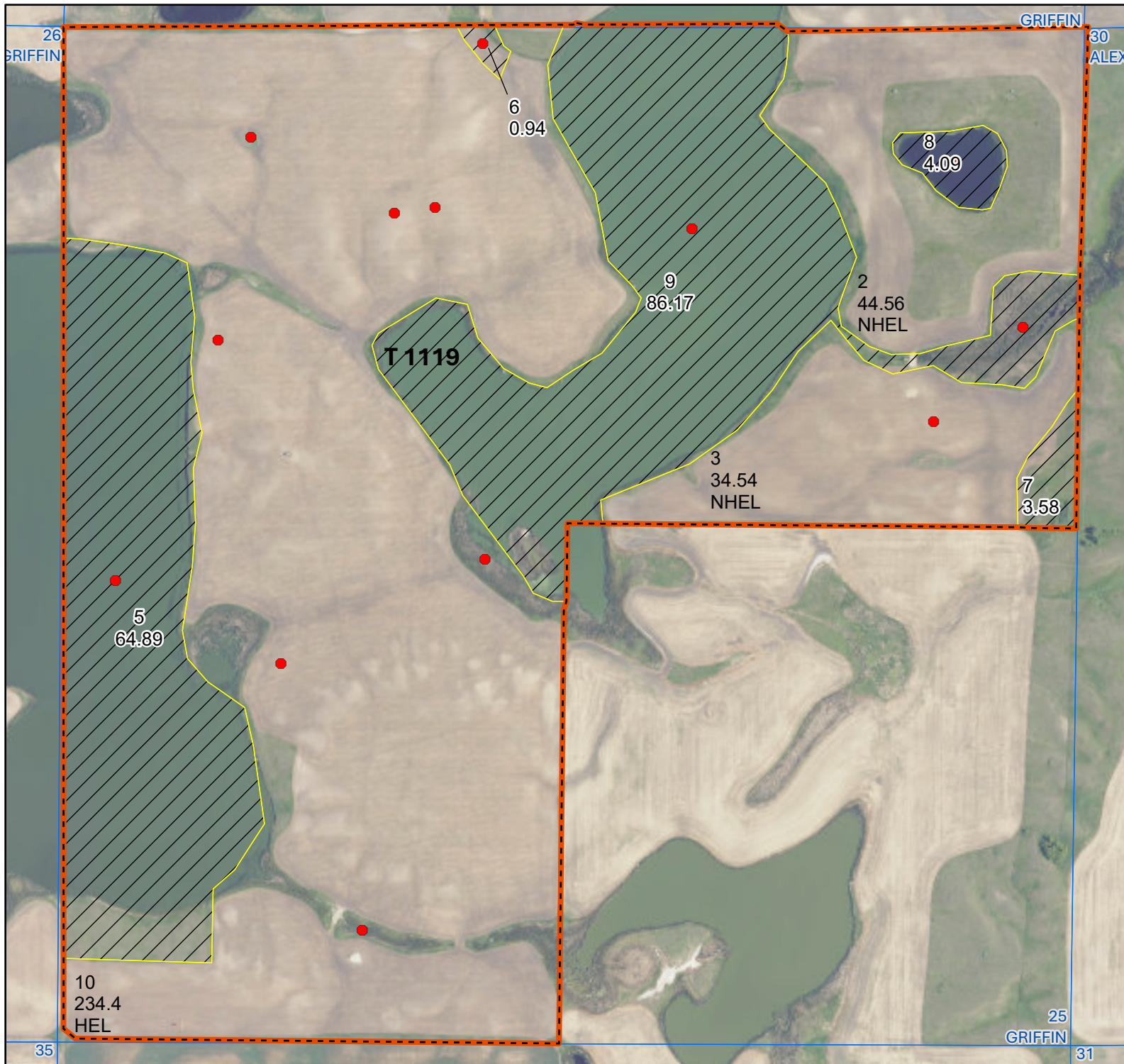
2025 Program Year

2023 imagery
Map Created 04/15/2025



Unless Otherwise Noted:

- Barley = Spring for Grain
- Canola = Spring for Processing
- Corn = Yellow for Grain
- Flax = Common for Grain
- Oats = Spring for Grain
- Soybeans = Common for Grain
- Sunflowers = Oil for Grain
- Wheat = Spring for Grain
- All fields are non-irrigated
- Shares are 100% to operator



- Tract Boundary
- Noncropland
- Cropland
- PLSS

Wetland Determination Identifiers

- Restricted Use
 - Limited Restrictions
 - Exempt from
 - Conservation
- Compliance Provisions

United States Department of Agriculture (USDA) Farm Service Agency (FSA) maps are for FSA Program administration only. This map does not represent a legal survey or reflect actual ownership; rather it depicts the information provided directly from the producer and/or National Agricultural Imagery Program (NAIP) imagery. The producer accepts the data 'as is' and assumes all risks associated with its use. USDA-FSA assumes no responsibility for actual or consequential damage incurred as a result of any user's reliance on this data outside FSA Programs. Wetland identifiers do not represent the size, shape, or specific determination of the area. Refer to your original determination (CPA-026 and attached maps) for exact boundaries and determinations or contact USDA NRCS. USDA is an equal opportunity provider, employer, and lender.



See Page 2 for non-discriminatory Statements.

Abbreviated 156 Farm Record

Operator Name :
CRP Contract Number(s) : None
Recon ID : None
Transferred From : None
ARCPLC G/I/F Eligibility : Eligible

Farm Land Data

Farmland	Cropland	DCP Cropland	WBP	EWP	WRP	GRP	Sugarcane	Farm Status	Number Of Tracts
222.37	190.61	190.61	0.00	0.00	0.00	0.00	0.0	Active	1
State Conservation	Other Conservation	Effective DCP Cropland	Double Cropped		CRP	MPL	DCP Ag.Rel. Activity	SOD	
0.00	0.00	190.61	0.00		0.00	0.00	0.00	0.00	

Crop Election Choice

ARC Individual	ARC County	Price Loss Coverage
None	SOYBN	None

DCP Crop Data

Crop Name	Base Acres	CCC-505 CRP Reduction Acres	PLC Yield	HIP
Soybeans	146.90	0.00	26	0
TOTAL	146.90	0.00		

NOTES

--

Tract Number : **3**
Description : W2-31-132-66 #51
FSA Physical Location : NORTH DAKOTA/DICKEY
ANSI Physical Location : NORTH DAKOTA/DICKEY
BIA Unit Range Number :
CRP Contract Number(s) : None
HEL Status : NHEL: No agricultural commodity planted on undetermined fields
Wetland Status : Tract contains a wetland or farmed wetland
WL Violations : None
Owners :
Other Producers : None
Recon ID : None

Tract Land Data

Farm Land	Cropland	DCP Cropland	WBP	EWP	WRP	GRP	Sugarcane
222.37	190.61	190.61	0.00	0.00	0.00	0.00	0.0

Abbreviated 156 Farm Record

Tract 3 Continued ...

State Conservation	Other Conservation	Effective DCP Cropland	Double Cropped	CRP	MPL	DCP Ag. Rel Activity	SOD
0.00	0.00	190.61	0.00	0.00	0.00	0.00	0.00

DCP Crop Data

Crop Name	Base Acres	CCC-505 CRP Reduction Acres	PLC Yield
Soybeans	146.90	0.00	26
TOTAL	146.90	0.00	

NOTES

--

In accordance with Federal civil rights law and U.S. Department of Agriculture (USDA) civil rights regulations and policies, the USDA, its Agencies, offices, and employees, and institutions participating in or administering USDA programs are prohibited from discriminating based on race, color, national origin, religion, sex, disability, age, marital status, family/parental status, income derived from a public assistance program, political beliefs, or reprisal or retaliation for prior civil rights activity, in any program or activity conducted or funded by USDA (not all bases apply to all programs). Remedies and complaint filing deadlines vary by program or incident.

Persons with disabilities who require alternative means of communication for program information (e.g., Braille, large print, audiotape, American Sign Language, etc.) should contact the State or Local Agency that administers the program or contact USDA through the Telecommunications Relay Service at 711 (voice and TTY). Additionally, program information may be made available in languages other than English.

To file a program discrimination complaint, complete the USDA Program Discrimination Complaint Form, AD-3027, found online at [How to File a Program Discrimination Complaint](#) and at any USDA office or write a letter addressed to USDA and provide in the letter all of the information requested in the form. To request a copy of the complaint form, call (866) 632-9992. Submit your completed form or letter to USDA by: (1) Mail: U.S. Department of Agriculture Office of the Assistant Secretary for Civil Rights, 1400 Independence Avenue, SW Washington, D.C. 20250-9410; (2) Fax: (202) 690-7442; or (3) Email: program.intake@usda.gov. USDA is an equal opportunity provider, employer, and lender.



Abbreviated 156 Farm Record

Operator Name

CRP Contract Number(s) : None
Recon ID : None
Transferred From : None
ARCPLC G//F Eligibility : Eligible

Farm Land Data

Farmland	Cropland	DCP Cropland	WBP	EWP	WRP	GRP	Sugarcane	Farm Status	Number Of Tracts
1,346.79	1,048.23	1,048.23	0.00	0.00	0.00	0.00	0.0	Active	3
State Conservation	Other Conservation	Effective DCP Cropland	Double Cropped		CRP	MPL	DCP Ag.Rel. Activity	SOD	
0.00	0.00	1,048.23	0.00		0.00	0.00	0.00	0.00	

Crop Election Choice

ARC Individual	ARC County	Price Loss Coverage
None	WHEAT, OATS, SOYBN, BARLY	None

DCP Crop Data

Crop Name	Base Acres	CCC-505 CRP Reduction Acres	PLC Yield	HIP
Wheat	104.70	0.00	30	
Oats	15.90	0.00	48	
Soybeans	604.20	0.00	28	0
Barley	41.90	0.00	42	
TOTAL	766.70	0.00		

NOTES

Tract Number : 1084

Description : N2 28, NE 29-138-67
FSA Physical Location : NORTH DAKOTA/STUTSMAN
ANSI Physical Location : NORTH DAKOTA/STUTSMAN
BIA Unit Range Number :
CRP Contract Number(s) : None
HEL Status : NHEL: No agricultural commodity planted on undetermined fields
Wetland Status : Tract contains a wetland or farmed wetland
WL Violations : None
Owners
Other Producers :
Recon ID : None

Abbreviated 156 Farm Record

Tract Land Data

Tract 1084 Continued ...

Farm Land	Cropland	DCP Cropland	WBP	EWP	WRP	GRP	Sugarcane
471.28	352.48	352.48	0.00	0.00	0.00	0.00	0.0
State Conservation	Other Conservation	Effective DCP Cropland	Double Cropped	CRP	MPL	DCP Ag. Rel Activity	SOD
0.00	0.00	352.48	0.00	0.00	0.00	0.00	0.00

DCP Crop Data

Crop Name	Base Acres	CCC-505 CRP Reduction Acres	PLC Yield
Wheat	50.22	0.00	30
Soybeans	289.83	0.00	28
TOTAL	340.05	0.00	

NOTES

Tract Number : 1119

Description : W2, NE 25-137-67
FSA Physical Location : NORTH DAKOTA/STUTSMAN
ANSI Physical Location : NORTH DAKOTA/STUTSMAN
BIA Unit Range Number :
CRP Contract Number(s) : None
HEL Status : HEL field on tract.Conservation system being actively applied
Wetland Status : Tract contains a wetland or farmed wetland
WL Violations : None
Owners :
Other Producers : None
Recon ID : None

Tract Land Data

Farm Land	Cropland	DCP Cropland	WBP	EWP	WRP	GRP	Sugarcane
473.17	313.50	313.50	0.00	0.00	0.00	0.00	0.0
State Conservation	Other Conservation	Effective DCP Cropland	Double Cropped	CRP	MPL	DCP Ag. Rel Activity	SOD
0.00	0.00	313.50	0.00	0.00	0.00	0.00	0.00

DCP Crop Data

Crop Name	Base Acres	CCC-505 CRP Reduction Acres	PLC Yield
Oats	15.90	0.00	48
Barley	41.90	0.00	42
TOTAL	57.80	0.00	

Abbreviated 156 Farm Record

Tract 1119 Continued ...

NOTES

Tract Number : 1120

Description : NE 7; NW, N2SW 8-137-66
FSA Physical Location : NORTH DAKOTA/STUTSMAN
ANSI Physical Location : NORTH DAKOTA/STUTSMAN
BIA Unit Range Number :
CRP Contract Number(s) : None
HEL Status : NHEL: No agricultural commodity planted on undetermined fields
Wetland Status : Tract contains a wetland or farmed wetland
WL Violations : None
Owners
Other Producers : None
Recon ID : None

Tract Land Data

Farm Land	Cropland	DCP Cropland	WBP	EWP	WRP	GRP	Sugarcane
402.34	382.25	382.25	0.00	0.00	0.00	0.00	0.0
State Conservation	Other Conservation	Effective DCP Cropland	Double Cropped	CRP	MPL	DCP Ag. Rel Activity	SOD
0.00	0.00	382.25	0.00	0.00	0.00	0.00	0.00

DCP Crop Data

Crop Name	Base Acres	CCC-505 CRP Reduction Acres	PLC Yield
Wheat	54.48	0.00	30
Soybeans	314.37	0.00	28
TOTAL	368.85	0.00	

NOTES

In accordance with Federal civil rights law and U.S. Department of Agriculture (USDA) civil rights regulations and policies, the USDA, its Agencies, offices, and employees, and institutions participating in or administering USDA programs are prohibited from discriminating based on race, color, national origin, religion, sex, disability, age, marital status, family/parental status, income derived from a public assistance program, political beliefs, or reprisal or retaliation for prior civil rights activity, in any program or activity conducted or funded by USDA (not all bases apply to all programs). Remedies and complaint filing deadlines vary by program or incident.

Persons with disabilities who require alternative means of communication for program information (e.g., Braille, large print, audiotape, American Sign Language, etc.) should contact the State or Local Agency that administers the program or contact USDA through the Telecommunications Relay Service at 711 (voice and TTY). Additionally, program information may be made available in languages other than English.

To file a program discrimination complaint, complete the USDA Program Discrimination Complaint Form, AD-3027, found online at [How to File a Program Discrimination Complaint](#) and at any USDA office or write a letter addressed to USDA and provide in the letter all of the information requested in the form. To request a copy of the complaint form, call (866) 632-9992. Submit your completed form or letter to USDA by: (1) Mail: U.S. Department of Agriculture Office of the Assistant Secretary for Civil Rights, 1400 Independence Avenue, SW Washington, D.C. 20250-9410; (2) Fax: (202) 690-7442; or (3) Email: program.intake@usda.gov. USDA is an equal opportunity provider, employer, and lender.