



United States  
Department of  
Agriculture

## Clay County, Minnesota

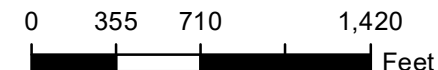
**Farm 7990**

**Tract 1214**

**2025 Program Year**

Map Created May 05, 2025

**1404715**



Unless otherwise noted:  
Shares are 100% operator  
Crops are non-irrigated  
Corn = yellow for grain  
Soybeans = common soybeans for grain  
Wheat = HRS, HRW = Grain  
Sunflower = Oil, Non-Oil = Grain  
Oats and Barley = Spring for grain  
Rye = for grain  
Peas = process  
Alfalfa, Mixed Forage AGM, GMA, IGS = for forage  
Beans = Dry Edible  
NAG = for GZ  
Canola = Spring for seed

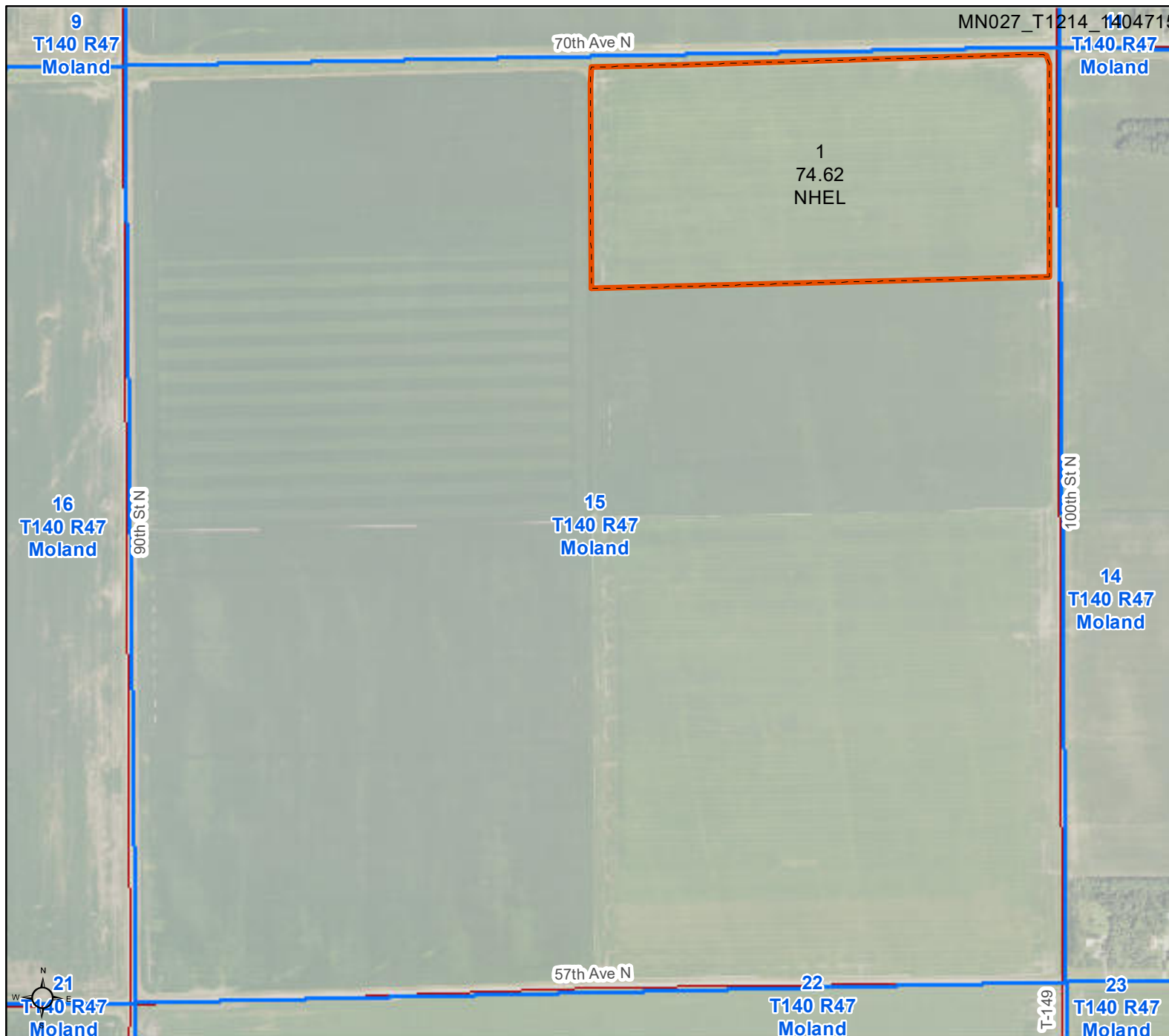
### Common Land Unit

- Cropland
- Tract Boundary

### Wetland Determination Identifiers

- Restricted Use
- Limited Restrictions
- Exempt from Conservation
- Compliance Provisions

Tract Cropland Total: 74.62 acres



United States Department of Agriculture (USDA) Farm Service Agency (FSA) maps are for FSA Program administration only. This map does not represent a legal survey or reflect actual ownership; rather it depicts the information provided directly from the producer and/or National Agricultural Imagery Program (NAIP) imagery. The producer accepts the data 'as is' and assumes all risks associated with its use. USDA-FSA assumes no responsibility for actual or consequential damage incurred as a result of any user's reliance on this data outside FSA Programs. Wetland identifiers do not represent the size, shape, or specific determination of the area. Refer to your original determination (CPA-026 and attached maps) for exact boundaries and determinations or contact USDA Natural Resources Conservation Service (NRCS). This map displays the 2023 NAIP imagery.



United States  
Department of  
Agriculture

## Clay County, Minnesota

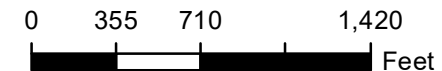
**Farm 7990**

**Tract 1213**

2025 Program Year

Map Created May 05, 2025

**1404715**



Unless otherwise noted:  
Shares are 100% operator  
Crops are non-irrigated  
Corn = yellow for grain  
Soybeans = common soybeans for grain  
Wheat = HRS, HRW = Grain  
Sunflower = Oil, Non-Oil = Grain  
Oats and Barley = Spring for grain  
Rye = for grain  
Peas = process  
Alfalfa, Mixed Forage AGM, GMA, IGS = for forage  
Beans = Dry Edible  
NAG = for GZ  
Canola = Spring for seed

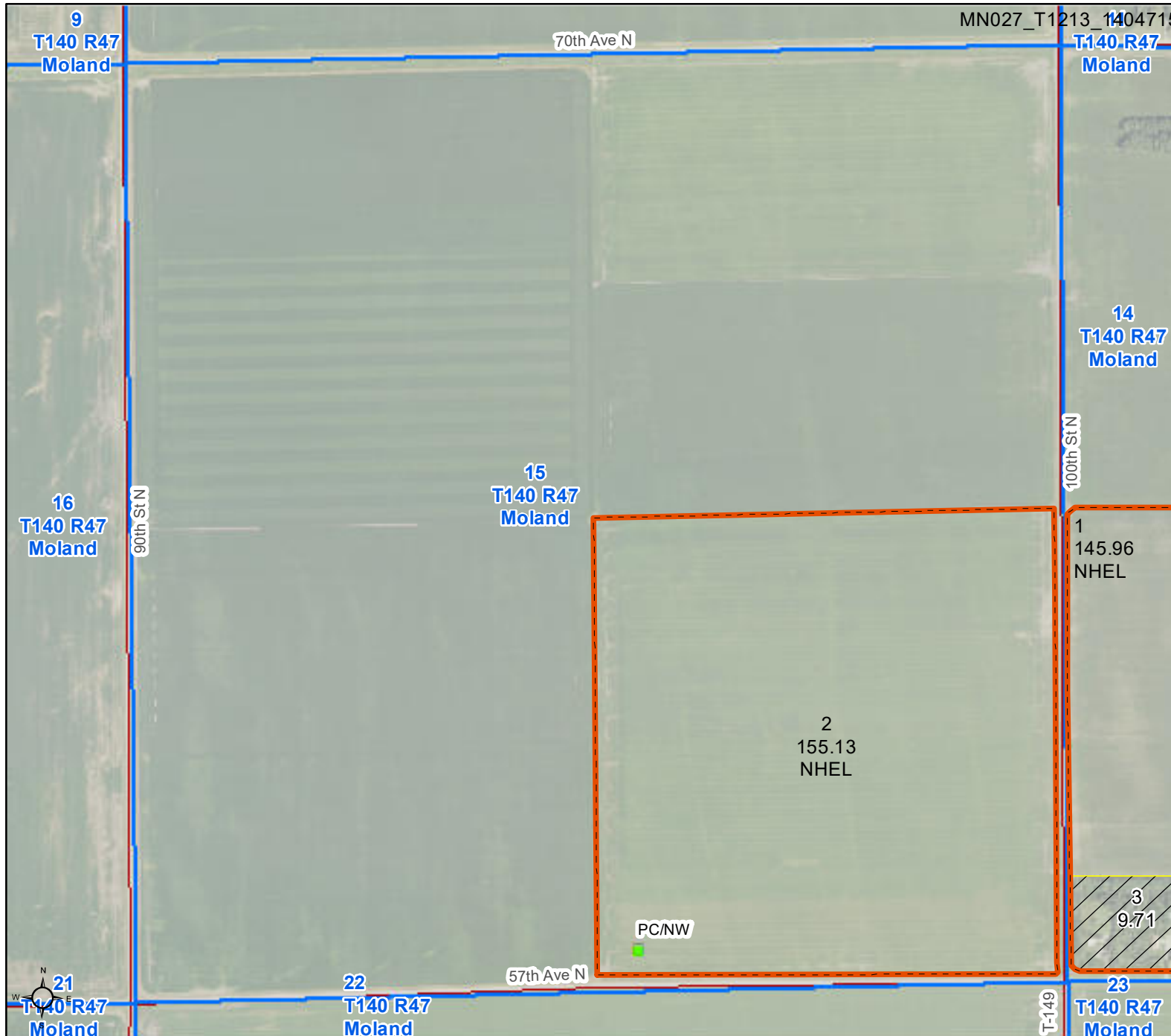
### Common Land Unit

- Non-Cropland
- Cropland
- Tract Boundary

### Wetland Determination Identifiers

- Restricted Use
- Limited Restrictions
- Exempt from Conservation Compliance Provisions

Tract Cropland Total: 301.09 acres



United States Department of Agriculture (USDA) Farm Service Agency (FSA) maps are for FSA Program administration only. This map does not represent a legal survey or reflect actual ownership; rather it depicts the information provided directly from the producer and/or National Agricultural Imagery Program (NAIP) imagery. The producer accepts the data 'as is' and assumes all risks associated with its use. USDA-FSA assumes no responsibility for actual or consequential damage incurred as a result of any user's reliance on this data outside FSA Programs. Wetland identifiers do not represent the size, shape, or specific determination of the area. Refer to your original determination (CPA-026 and attached maps) for exact boundaries and determinations or contact USDA Natural Resources Conservation Service (NRCS). This map displays the 2023 NAIP imagery.



United States  
Department of  
Agriculture

## Clay County, Minnesota

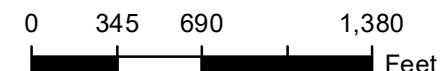
**Farm 7990**

**Tract 1213**

2025 Program Year

Map Created May 05, 2025

**1404714**



Unless otherwise noted:  
 Shares are 100% operator  
 Crops are non-irrigated  
 Corn = yellow for grain  
 Soybeans = common soybeans for grain  
 Wheat = HRS, HRW = Grain  
 Sunflower = Oil, Non-Oil = Grain  
 Oats and Barley = Spring for grain  
 Rye = for grain  
 Peas = process  
 Alfalfa, Mixed Forage AGM, GMA, IGS = for forage  
 Beans = Dry Edible  
 NAG = for GZ  
 Canola = Spring for seed

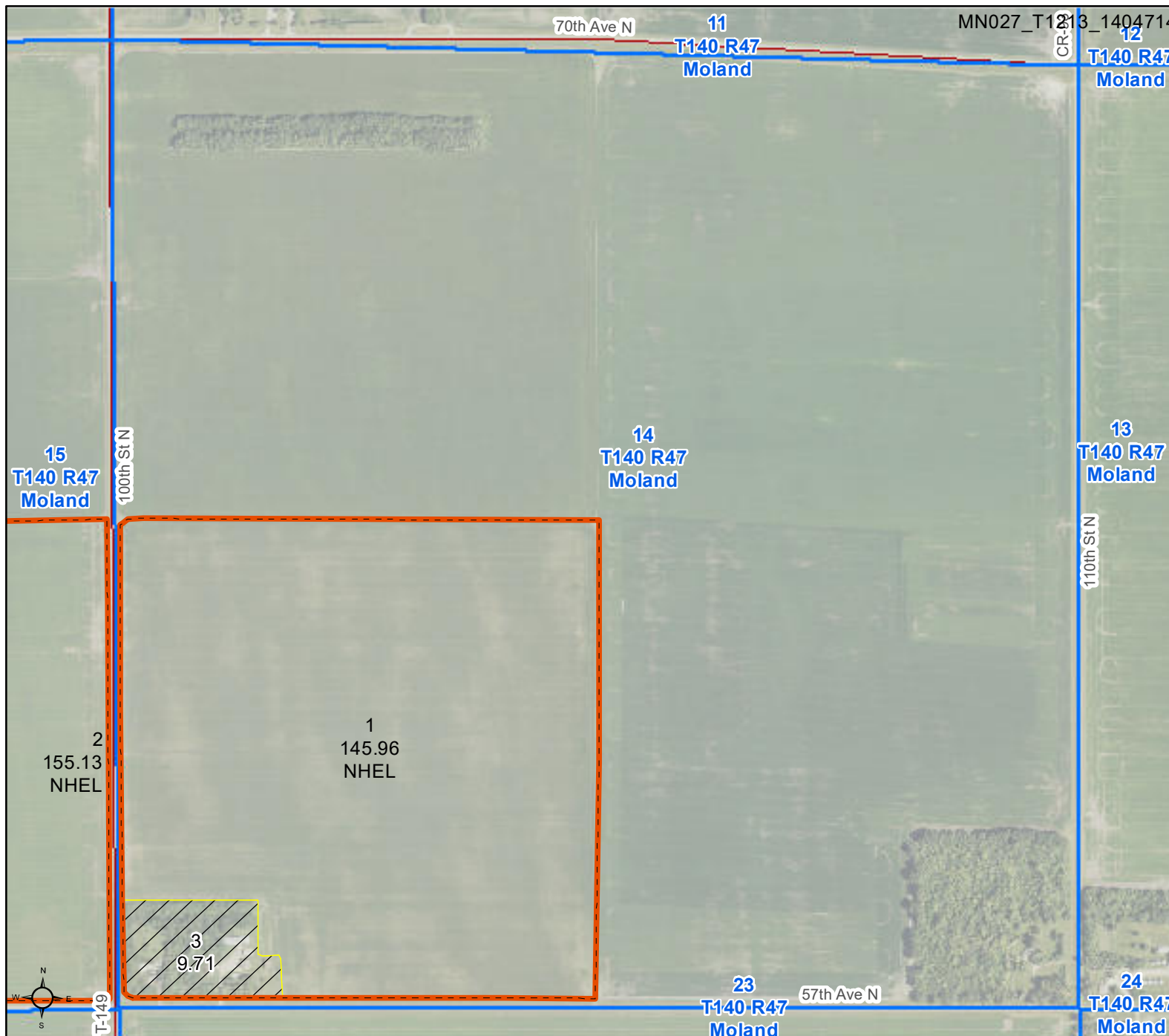
### Common Land Unit

- Non-Cropland
- Cropland
- Tract Boundary

### Wetland Determination Identifiers

- Restricted Use
- Limited Restrictions
- Exempt from Conservation Compliance Provisions

Tract Cropland Total: 301.09 acres



United States Department of Agriculture (USDA) Farm Service Agency (FSA) maps are for FSA Program administration only. This map does not represent a legal survey or reflect actual ownership; rather it depicts the information provided directly from the producer and/or National Agricultural Imagery Program (NAIP) imagery. The producer accepts the data 'as is' and assumes all risks associated with its use. USDA-FSA assumes no responsibility for actual or consequential damage incurred as a result of any user's reliance on this data outside FSA Programs. Wetland identifiers do not represent the size, shape, or specific determination of the area. Refer to your original determination (CPA-026 and attached maps) for exact boundaries and determinations or contact USDA Natural Resources Conservation Service (NRCS). This map displays the 2023 NAIP imagery.

MINNESOTA

CLAY

Form: FSA-156EZ

See Page 3 for non-discriminatory Statements.

United States Department of Agriculture  
Farm Service Agency

FARM : 7990

Prepared : 1/23/26 12:43 PM CST

Crop Year : 2026

## Abbreviated 156 Farm Record

## Operator Name

CRP Contract Number(s) : None

Recon ID : None

Transferred From : None

ARCPLC G//F Eligibility : Eligible

## Farm Land Data

Farmland	Cropland	DCP Cropland	WBP	EWP	WRP	GRP	Sugarcane	Farm Status	Number Of Tracts
385.42	375.71	375.71	0.00	0.00	0.00	0.00	0.0	Active	2
State Conservation	Other Conservation	Effective DCP Cropland	Double Cropped			CRP	MPL	DCP Ag.Rel. Activity	SOD
0.00	0.00	375.71	0.00			0.00	0.00	0.00	0.00

## Crop Election Choice

ARC Individual	ARC County	Price Loss Coverage
None	WHEAT, CORN, SOYBN	None

## DCP Crop Data

Crop Name	Base Acres	CCC-505 CRP Reduction Acres	PLC Yield	HIP
Wheat	46.14	0.00	58	
Corn	14.49	0.00	144	0
Soybeans	189.17	0.00	33	0
<b>TOTAL</b>	<b>249.80</b>	<b>0.00</b>		

## NOTES

Tract Number : 1213

Description : SW 14;SE 15 MOLAND

FSA Physical Location : MINNESOTA/CLAY

ANSI Physical Location : MINNESOTA/CLAY

BIA Unit Range Number :

CRP Contract Number(s) : None

HEL Status : NHEL: No agricultural commodity planted on undetermined fields

Wetland Status : Tract does not contain a wetland

WL Violations : None

Owners

Other Producers

Recon ID : None

## Tract Land Data

Farm Land	Cropland	DCP Cropland	WBP	EWP	WRP	GRP	Sugarcane
310.80	301.09	301.09	0.00	0.00	0.00	0.00	0.0

**Abbreviated 156 Farm Record**

**Tract 1213 Continued ...**

State Conservation	Other Conservation	Effective DCP Cropland	Double Cropped	CRP	MPL	DCP Ag. Rel Activity	SOD
0.00	0.00	301.09	0.00	0.00	0.00	0.00	0.00

**DCP Crop Data**

Crop Name	Base Acres	CCC-505 CRP Reduction Acres	PLC Yield
Wheat	36.98	0.00	58
Corn	11.61	0.00	144
Soybeans	151.60	0.00	33
<b>TOTAL</b>	<b>200.19</b>	<b>0.00</b>	

**NOTES**

**Tract Number : 1214**

**Description :** NNE 15 MOLAND  
**FSA Physical Location :** MINNESOTA/CLAY  
**ANSI Physical Location :** MINNESOTA/CLAY  
**BIA Unit Range Number :**  
**CRP Contract Number(s) :** None  
**HEL Status :** NHEL: No agricultural commodity planted on undetermined fields  
**Wetland Status :** Tract does not contain a wetland  
**WL Violations :** None  
**Owners**  
**Other Producers :** None  
**Recon ID**

**Tract Land Data**

Farm Land	Cropland	DCP Cropland	WBP	EWP	WRP	GRP	Sugarcane
74.62	74.62	74.62	0.00	0.00	0.00	0.00	0.0
State Conservation	Other Conservation	Effective DCP Cropland	Double Cropped	CRP	MPL	DCP Ag. Rel Activity	SOD
0.00	0.00	74.62	0.00	0.00	0.00	0.00	0.00

**DCP Crop Data**

Crop Name	Base Acres	CCC-505 CRP Reduction Acres	PLC Yield
Wheat	9.16	0.00	58
Corn	2.88	0.00	144
Soybeans	37.57	0.00	33
<b>TOTAL</b>	<b>49.61</b>	<b>0.00</b>	