

- Common Land Unit**
- Native Sod
 - Tract Boundary
 - PLSS
 - Non-Cropland
 - Cropland

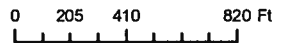
- Wetland Determination Identifiers**
- Restricted Use
 - Limited Restrictions
 - Exempt from Conservation Compliance Provisions

Unless Otherwise Noted:

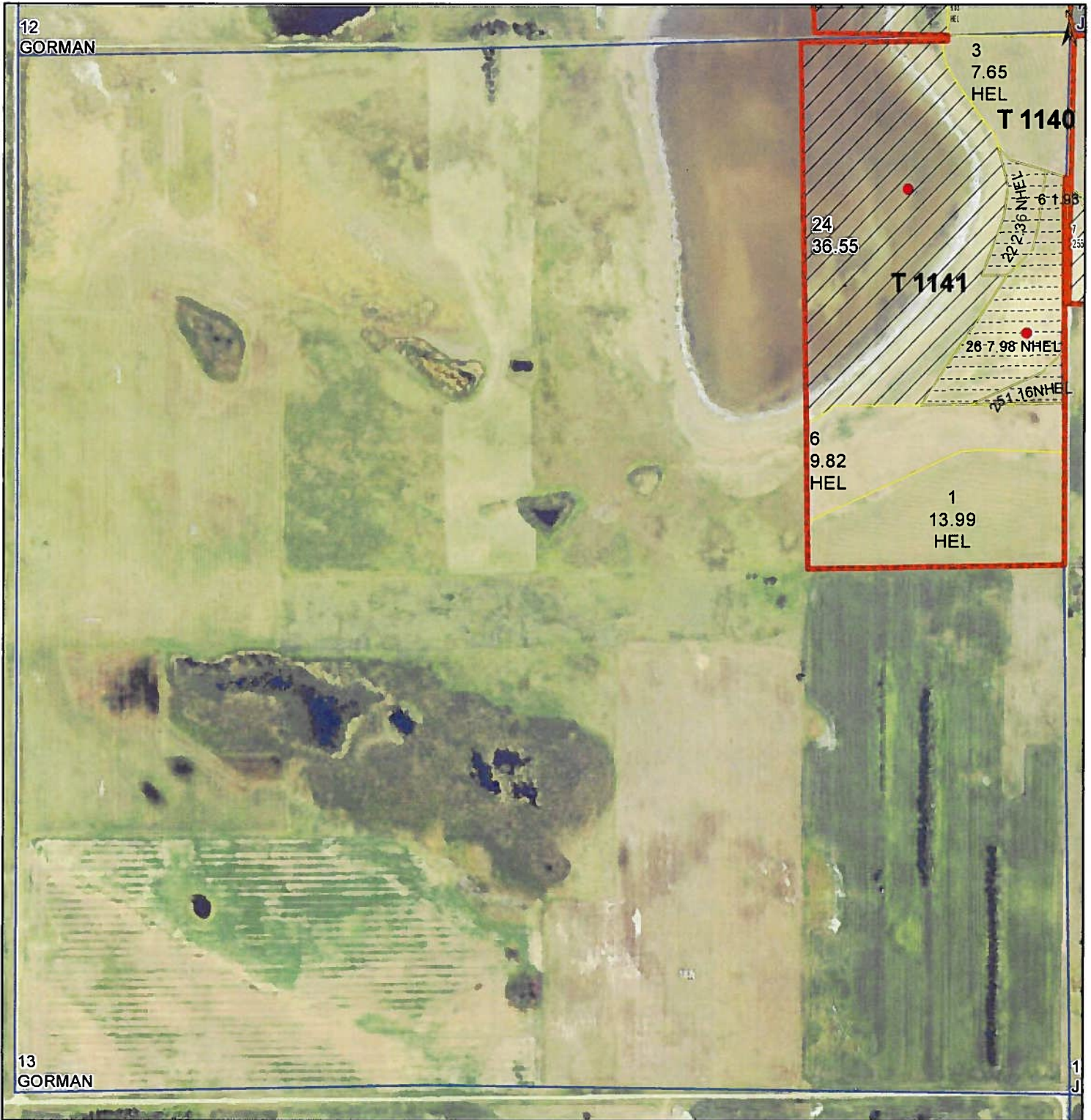
- Barley = Spring for Grain
- Canola = Spring for Processing
- Corn = Yellow for Grain
- Flax = Common for Grain
- Oats = Spring for Grain
- Soybeans = Common for Grain
- Sunflowers = Oil for Grain
- Wheat = Spring for Grain
- All fields are non-irrigated
- Shares are 100% to operator

2025 Program Year
2023 Imagery

S12 T155N R75W
Phy Cnty: McHenry



United States Department of Agriculture (USDA) Farm Service Agency (FSA) maps are for FSA Program administration only. This map does not represent a legal survey or reflect actual ownership; rather it depicts the information provided directly from the producer and/or National Agricultural Imagery Program (NAIP) imagery. The producer accepts the data 'as is' and assumes all risks associated with its use. USDA-FSA assumes no responsibility for actual or consequential damage incurred as a result of any user's reliance on this data outside FSA Programs. Wetland identifiers do not represent the size, shape, or specific determination of the area. Refer to your original determination (CPA-026 and attached maps) for exact boundaries and determinations or contact USDA Natural Resources Conservation Service (NRCS).



- Common Land Unit**
- Native Sod
 - Tract Boundary
 - PLSS
 - Non-Cropland
 - Cropland

Wetland Determination Identifiers

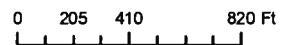
- Restricted Use
- Limited Restrictions
- Exempt from Conservation
- Compliance Provisions

Unless Otherwise Noted:

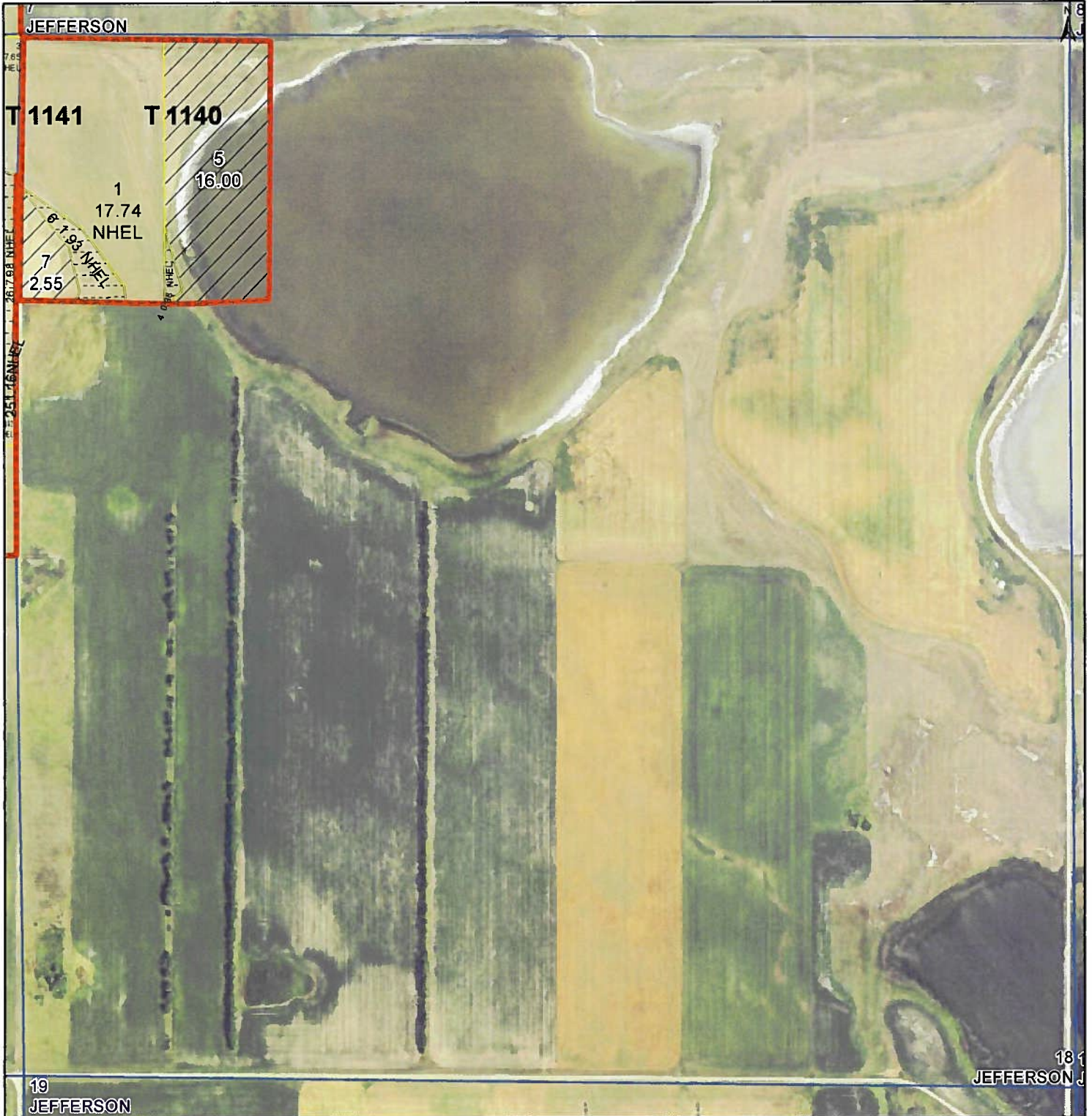
- Barley = Spring for Grain
- Canola = Spring for Processing
- Corn = Yellow for Grain
- Flax = Common for Grain
- Oats = Spring for Grain
- Soybeans = Common for Grain
- Sunflowers = Oil for Grain
- Wheat = Spring for Grain
- All fields are non-irrigated
- Shares are 100% to operator

2025 Program Year
2023 Imagery

S13 T155N R75W
Phy Cnty: McHenry



United States Department of Agriculture (USDA) Farm Service Agency (FSA) maps are for FSA Program administration only. This map does not represent a legal survey or reflect actual ownership; rather it depicts the information provided directly from the producer and/or National Agricultural Imagery Program (NAIP) imagery. The producer accepts the data 'as is' and assumes all risks associated with its use. USDA-FSA assumes no responsibility for actual or consequential damage incurred as a result of any user's reliance on this data outside FSA Programs. Wetland identifiers do not represent the size, shape, or specific determination of the area. Refer to your original determination (CPA-026 and attached maps) for exact boundaries and determinations or contact USDA Natural Resources Conservation Service (NRCS).



- Common Land Unit**
- Native Sod
 - Tract Boundary
 - PLSS
 - Non-Cropland
 - Cropland

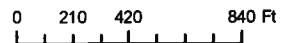
- Wetland Determination Identifiers**
- Restricted Use
 - Limited Restrictions
 - Exempt from Conservation
 - Compliance Provisions

Unless Otherwise Noted:

- Barley = Spring for Grain
- Canola = Spring for Processing
- Corn = Yellow for Grain
- Flax = Common for Grain
- Oats = Spring for Grain
- Soybeans = Common for Grain
- Sunflowers = Oil for Grain
- Wheat = Spring for Grain
- All fields are non-irrigated
- Shares are 100% to operator

2025 Program Year
2023 Imagery

S18 T155N R74W
Phy Cnty: Pierce



United States Department of Agriculture (USDA) Farm Service Agency (FSA) maps are for FSA Program administration only. This map does not represent a legal survey or reflect actual ownership; rather it depicts the information provided directly from the producer and/or National Agricultural Imagery Program (NAIP) imagery. The producer accepts the data 'as is' and assumes all risks associated with its use. USDA-FSA assumes no responsibility for actual or consequential damage incurred as a result of any user's reliance on this data outside FSA Programs. Wetland identifiers do not represent the size, shape, or specific determination of the area. Refer to your original determination (CPA-026 and attached maps) for exact boundaries and determinations or contact USDA Natural Resources Conservation Service (NRCS).



Common Land Unit Tract Boundary PLSS

Cropland
 CRP

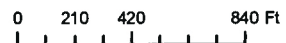
Wetland Determination Identifiers
 Restricted Use
 Limited Restrictions
 Exempt from Conservation Compliance Provisions

Unless Otherwise Noted:

Barley = Spring for Grain	Soybeans = Common for Grain
Canola = Spring for Processing	Sunflowers = Oil for Grain
Corn = Yellow for Grain	Wheat = Spring for Grain
Flax = Common for Grain	All fields are non-irrigated
Oats = Spring for Grain	Shares are 100% to operator

2025 Program Year
 2023 Imagery

S35 T156N R75W
 Phy Cnty: McHenry



United States Department of Agriculture (USDA) Farm Service Agency (FSA) maps are for FSA Program administration only. This map does not represent a legal survey or reflect actual ownership; rather it depicts the information provided directly from the producer and/or National Agricultural Imagery Program (NAIP) imagery. The producer accepts the data 'as is' and assumes all risks associated with its use. USDA-FSA assumes no responsibility for actual or consequential damage incurred as a result of any user's reliance on this data outside FSA Programs. Wetland identifiers do not represent the size, shape, or specific determination of the area. Refer to your original determination (CPA-026 and attached maps) for exact boundaries and determinations or contact USDA Natural Resources Conservation Service (NRCS).

Abbreviated 156 Farm Record

NOTES

Tract Number : 1140
Description : NWNW 18-155-74
FSA Physical Location : NORTH DAKOTA/PIERCE
ANSI Physical Location : NORTH DAKOTA/PIERCE
BIA Unit Range Number :
CRP Contract Number(s) : None
HEL Status : NHEL: No agricultural commodity planted on undetermined fields
Wetland Status : Tract contains a wetland or farmed wetland
WL Violations : None
Owners :
Other Producers :
Recon ID : None

Tract Land Data

Farm Land	Cropland	DCP Cropland	WBP	EWP	WRP	GRP	Sugarcane
38.60	20.05	20.05	0.00	0.00	0.00	0.00	0.0
State Conservation	Other Conservation	Effective DCP Cropland	Double Cropped	CRP	MPL	DCP Ag. Rel Activity	SOD
0.00	0.00	20.05	0.00	0.00	0.00	0.00	2.31

DCP Crop Data

Crop Name	Base Acres	CCC-505 CRP Reduction Acres	PLC Yield
Wheat	7.15	0.00	52
Corn	0.35	0.00	89
Sunflowers	1.40	0.00	1221
Soybeans	6.05	0.00	28
Barley	0.52	0.00	56
TOTAL	15.47	0.00	

NOTES

NORTH DAKOTA
 PIERCE
 Form: FSA-156EZ



FARM : 6012
 Prepared : 12/30/25 11:03 AM CST
 Crop Year : 2026

Abbreviated 156 Farm Record

Tract Number : 1141
Description : ESE; NWSE; NESW 12; ENE 13-155-75
FSA Physical Location : NORTH DAKOTA/MCHENRY
ANSI Physical Location : NORTH DAKOTA/MCHENRY
BIA Unit Range Number :
CRP Contract Number(s) : None
HEL Status : HEL field on tract.Conservation system being actively applied
Wetland Status : Tract does not contain a wetland
WL Violations : None
Owners :
Other Producers :
Recon ID : None

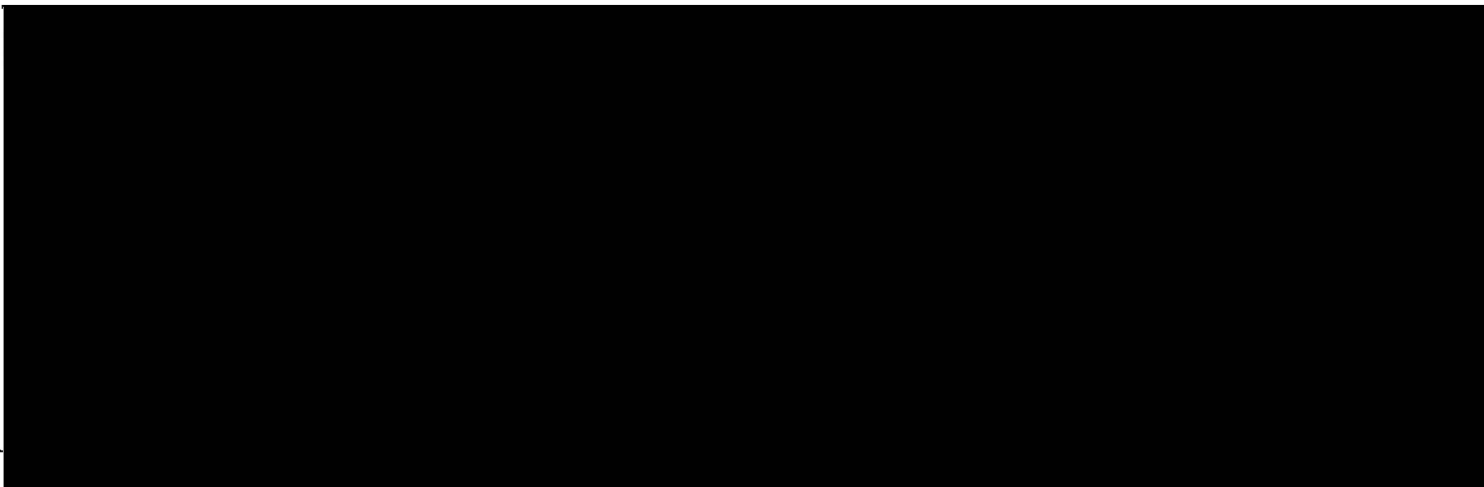
Tract Land Data

Farm Land	Cropland	DCP Cropland	WBP	EWP	WRP	GRP	Sugarcane
235.59	53.74	53.74	0.00	0.00	0.00	0.00	0.0
State Conservation	Other Conservation	Effective DCP Cropland	Double Cropped	CRP	MPL	DCP Ag. Rel Activity	SOD
0.00	0.00	53.74	0.00	0.00	0.00	0.00	12.45

DCP Crop Data

Crop Name	Base Acres	CCC-505 CRP Reduction Acres	PLC Yield
Wheat	22.33	0.00	52
Corn	0.73	0.00	89
Sunflowers	2.90	0.00	1221
Soybeans	12.52	0.00	28
Barley	1.08	0.00	56
TOTAL	39.56	0.00	

NOTES



Abbreviated 156 Farm Record

Tract 4780 Continued ...

DCP Crop Data

Crop Name	Base Acres	CCC-505 CRP Reduction Acres	PLC Yield
Com	17.60	0.00	99
Soybeans	5.82	0.00	29
TOTAL	23.42	0.00	

NOTES

Tract Number : 4781
Description : NENE 35-156-75
FSA Physical Location : NORTH DAKOTA/MCHENRY
ANSI Physical Location : NORTH DAKOTA/MCHENRY
BIA Unit Range Number :
CRP Contract Number(s) : 11101
HEL Status : HEL field on tract.Conservation system being actively applied
Wetland Status : Tract contains a wetland or farmed wetland
WL Violations : None
Owners :
Other Producers : None
Recon ID :

Tract Land Data

Farm Land	Cropland	DCP Cropland	WBP	EWP	WRP	GRP	Sugarcane
38.75	38.75	38.75	0.00	0.00	0.00	0.00	0.0
State Conservation	Other Conservation	Effective DCP Cropland	Double Cropped	CRP	MPL	DCP Ag. Rel Activity	SOD
0.00	0.00	19.70	0.00	19.05	0.00	0.00	0.00

DCP Crop Data

Crop Name	Base Acres	CCC-505 CRP Reduction Acres	PLC Yield
Com	10.88	0.00	99
Soybeans	3.60	0.00	29
TOTAL	14.48	0.00	

NOTES