

Wells County, ND

Farm 6798

Tract 735

S17 T148N R72W

Tract Cropland Total: 112.89 acres

Phy. Cnty: Wells

2026 Program Year

2023 imagery

Map Created 12/09/2025



Unless Otherwise Noted:

- Barley = Spring for Grain
- Canola = Spring for Processing
- Corn = Yellow for Grain
- Flax = Common for Grain
- Oats = Spring for Grain
- Soybeans = Common for Grain
- Sunflowers = Oil for Grain
- Wheat = Spring for Grain
- All fields are non-irrigated
- Shares are 100% to operator

Tract Boundary

Noncropland

Cropland

PLSS

Wetland Determination Identifiers

- Restricted Use
- Limited Restrictions
- Exempt from Conservation
- Compliance Provisions

Wells County, ND

Farm 6798

Tract 733

S5 T148N R72W

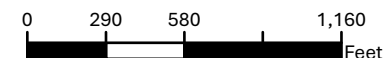
Tract Cropland Total: 148.72 acres

Phy. Cnty: Wells

2026 Program Year

2023 imagery

Map Created 12/09/2025



Unless Otherwise Noted:

- Barley = Spring for Grain
- Canola = Spring for Processing
- Corn = Yellow for Grain
- Flax = Common for Grain
- Oats = Spring for Grain
- Soybeans = Common for Grain
- Sunflowers = Oil for Grain
- Wheat = Spring for Grain
- All fields are non-irrigated
- Shares are 100% to operator

Tract Boundary

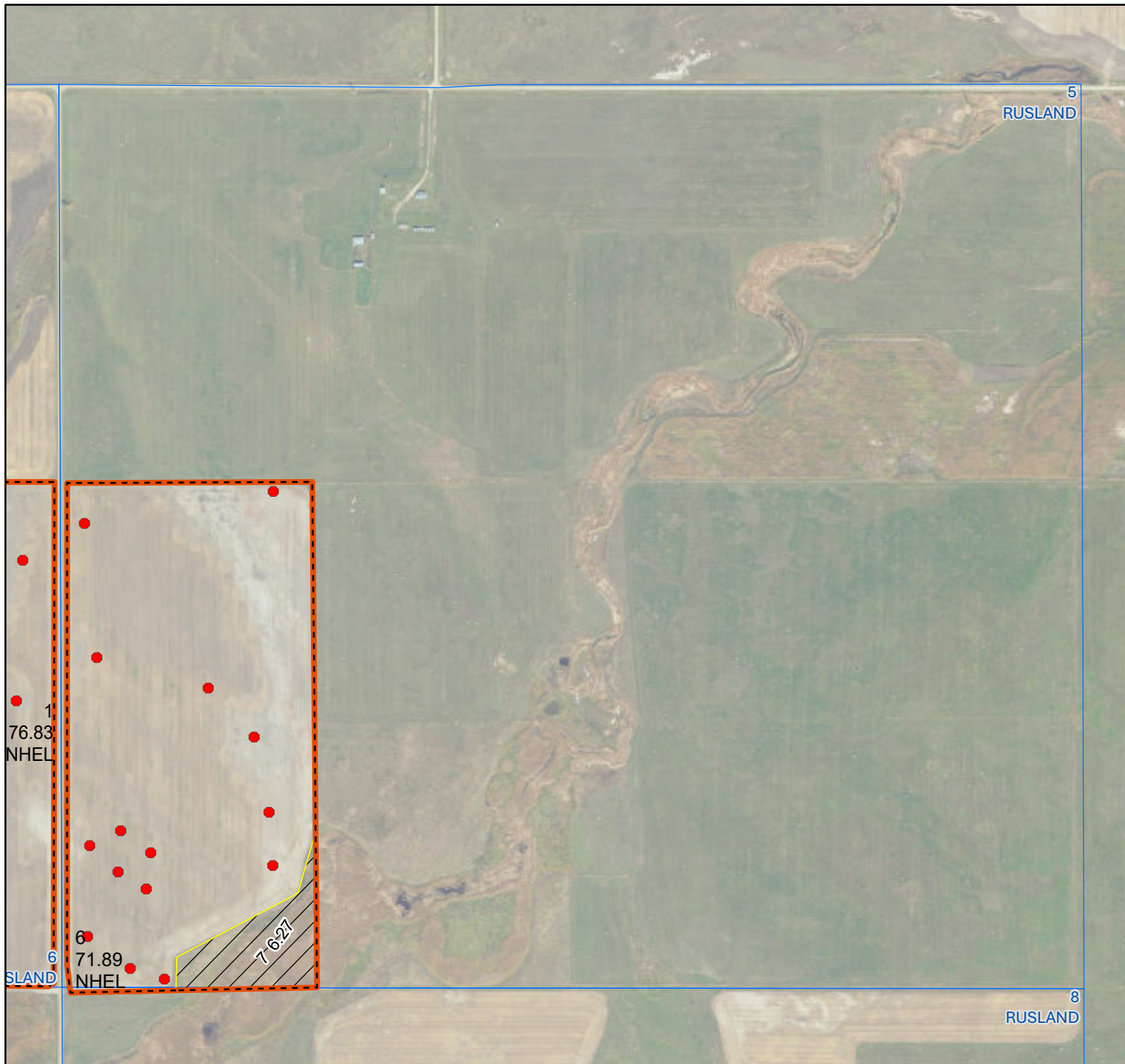
Noncropland

Cropland

PLSS

Wetland Determination Identifiers

- Restricted Use
 - Limited Restrictions
 - Exempt from Conservation
- Compliance Provisions



Wells County, ND

Farm 6798

Tract 733

S6 T148N R72W

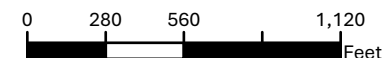
Tract Cropland Total: 148.72 acres

Phy. Cnty: Wells

2026 Program Year

2023 imagery

Map Created 12/09/2025



Unless Otherwise Noted:

- Barley = Spring for Grain
- Canola = Spring for Processing
- Corn = Yellow for Grain
- Flax = Common for Grain
- Oats = Spring for Grain
- Soybeans = Common for Grain
- Sunflowers = Oil for Grain
- Wheat = Spring for Grain
- All fields are non-irrigated
- Shares are 100% to operator

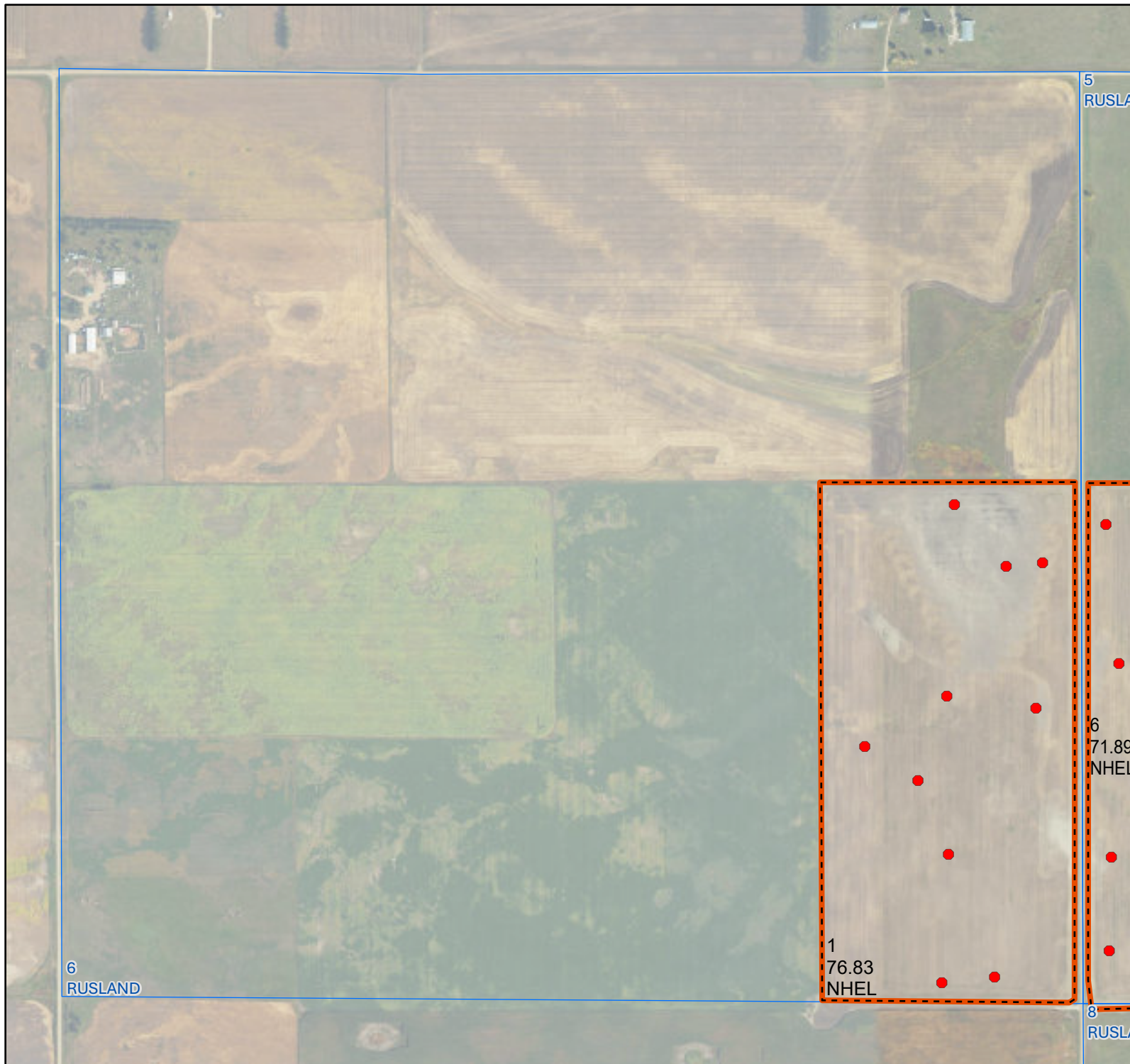
Tract Boundary

Cropland

PLSS

Wetland Determination Identifiers

- Restricted Use
- Limited Restrictions
- Exempt from Conservation Compliance Provisions





Abbreviated 156 Farm Record

Tract Number : 733

Description : W2SW 5;E2SE 6-148-72
FSA Physical Location : NORTH DAKOTA/WELLS
ANSI Physical Location : NORTH DAKOTA/WELLS
BIA Unit Range Number :
HEL Status : HEL determinations not completed for all fields on the tract
Wetland Status : Tract contains a wetland or farmed wetland
WL Violations : None
Owners
Other Producers
Recon ID : None

Tract Land Data

Farm Land	Cropland	DCP Cropland	WBP	EWP	WRP	GRP	Sugarcane
154.99	148.72	148.72	0.00	0.00	0.00	0.00	0.0
State Conservation	Other Conservation	Effective DCP Cropland	Double Cropped	CRP	MPL	DCP Ag. Rel Activity	SOD
0.00	0.00	148.72	0.00	0.00	0.00	0.00	0.00

DCP Crop Data

Crop Name	Base Acres	CCC-505 CRP Reduction Acres	PLC Yield
-----------	------------	-----------------------------	-----------



Abbreviated 156 Farm Record

Tract 733 Continued ...

Wheat	45.40	0.00	48
Corn	16.21	0.00	91
Sunflowers	8.11	0.00	1704
Soybeans	45.26	0.00	29
Barley	4.83	0.00	60
TOTAL	119.81	0.00	

NOTES

Tract Number : 735

Description : N2NW;SEnw 17-148-72
FSA Physical Location : NORTH DAKOTA/WELLS
ANSI Physical Location : NORTH DAKOTA/WELLS
BIA Unit Range Number :
HEL Status : NHEL: No agricultural commodity planted on undetermined fields
Wetland Status : Tract contains a wetland or farmed wetland
WL Violations : None
Owners
Other Producers : None
Recon ID : None

Tract Land Data

Farm Land	Cropland	DCP Cropland	WBP	EWP	WRP	GRP	Sugarcane
115.06	112.89	112.89	0.00	0.00	0.00	0.00	0.0
State Conservation	Other Conservation	Effective DCP Cropland	Double Cropped	CRP	MPL	DCP Ag. Rel Activity	SOD
0.00	0.00	112.89	0.00	0.00	0.00	0.00	0.00

DCP Crop Data

Crop Name	Base Acres	CCC-505 CRP Reduction Acres	PLC Yield
Wheat	34.41	0.00	48
Corn	12.29	0.00	91
Sunflowers	6.15	0.00	1704
Soybeans	34.31	0.00	29
Barley	3.66	0.00	60
TOTAL	90.82	0.00	

NOTES