

- Unless otherwise noted:  
 Shares are 100% operator  
 Crops are non-irrigated  
 Corn = yellow for grain  
 Soybeans = common soybeans for grain  
 Wheat = HRS, HRW = Grain  
 Sunflower = Oil, Non-Oil = Grain  
 Oats and Barley = Spring for grain  
 Rye = for grain  
 Peas = process  
 Alfalfa, Mixed Forage AGM, GMA, IGS = for forage  
 Beans = Dry Edible  
 NAG = for GZ  
 Canola = Spring for seed

**Common Land Unit**

- Cropland
- Tract Boundary

**Wetland Determination Identifiers**

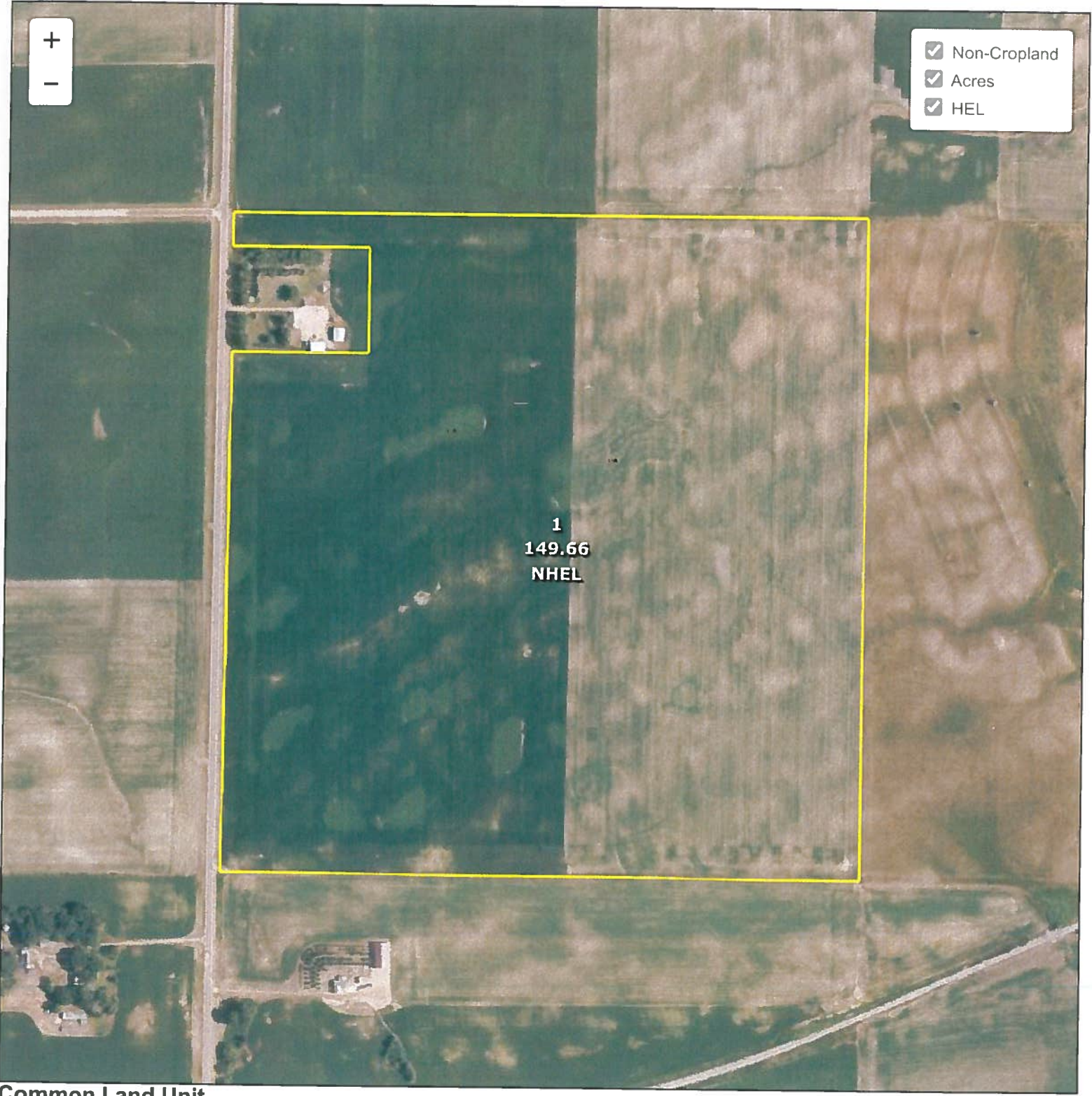
- Restricted Use
- ▼ Limited Restrictions
- Exempt from Conservation Compliance Provisions

Tract Cropland Total: 149.66 acres

United States Department of Agriculture (USDA) Farm Service Agency (FSA) maps are for FSA Program administration only. This map does not represent a legal survey or reflect actual ownership; rather it depicts the information provided directly from the producer and/or National Agricultural Imagery Program (NAIP) imagery. The producer accepts the data 'as is' and assumes all risks associated with its use. USDA-FSA assumes no responsibility for actual or consequential damage incurred as a result of any user's reliance on this data outside FSA Programs. Wetland identifiers do not represent the size, shape, or specific determination of the area. Refer to your original determination (CPA-026 and attached maps) for exact boundaries and determinations or contact USDA Natural Resources Conservation Service (NRCS). This map displays the 2021 NAIP imagery.



- Non-Cropland
- Acres
- HEL



**Common Land Unit**

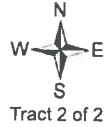
- Cropland
- Non-cropland
- CRP

**2025 Crop Year**

**Farm 9444**  
**Tract 11463**

**Wetland Determination Identifiers**

- Restricted Use
- ▼ Limited Restrictions
- Exempt from Conservation Compliance Provisions



Tract 2 of 2

United States Department of Agriculture (USDA) Farm Service Agency (FSA) maps are for FSA Program administration only. This map does not represent a legal survey or reflect actual ownership; rather it depicts the information provided directly from the producer and/or National Agricultural Imagery Program (NAIP) imagery. The producer accepts the data 'as is' and assumes all risks associated with its use. USDA-FSA assumes no responsibility for actual or consequential damage incurred as a result of any user's reliance on this data outside FSA Programs. Wetland identifiers do not represent the size, shape, or specific determination of the area. Refer to your original determination (CPA-026 and attached maps) for exact boundaries and determinations or contact USDA Natural Resources Conservation Service (NRCS).

MINNESOTA  
 BROWN  
 Form: FSA-156EZ



United States Department of Agriculture  
 Farm Service Agency

FARM : 9444  
 Prepared : 12/27/24 8:40 AM CST  
 Crop Year : 2025

Abbreviated 156 Farm Record



NOTES

**Tract Number** : 11463  
**Description** : PSW4S27NS  
**FSA Physical Location** : MINNESOTA/BROWN  
**ANSI Physical Location** : MINNESOTA/BROWN  
**BIA Unit Range Number** :  
**HEL Status** : NHEL: No agricultural commodity planted on undetermined fields  
**Wetland Status** : Tract contains a wetland or farmed wetland  
**WL Violations** : None  
**Owners** : VOGЕ INVESTMENTS LLC  
**Other Producers** : None  
**Recon ID** : None

Tract Land Data

Farm Land	Cropland	DCP Cropland	WBP	EWP	WRP	GRP	Sugarcane
149.66	149.66	149.66	0.00	0.00	0.00	0.00	0.0
State Conservation	Other Conservation	Effective DCP Cropland	Double Cropped	CRP	MPL	DCP Ag. Rel Activity	SOD
0.00	0.00	149.66	0.00	0.00	0.00	0.00	0.00

DCP Crop Data

Crop Name	Base Acres	CCC-505 CRP Reduction Acres	PLC Yield
Corn	74.90	0.00	183
Soybeans	74.70	0.00	45
<b>TOTAL</b>	<b>149.60</b>	<b>0.00</b>	

NOTES