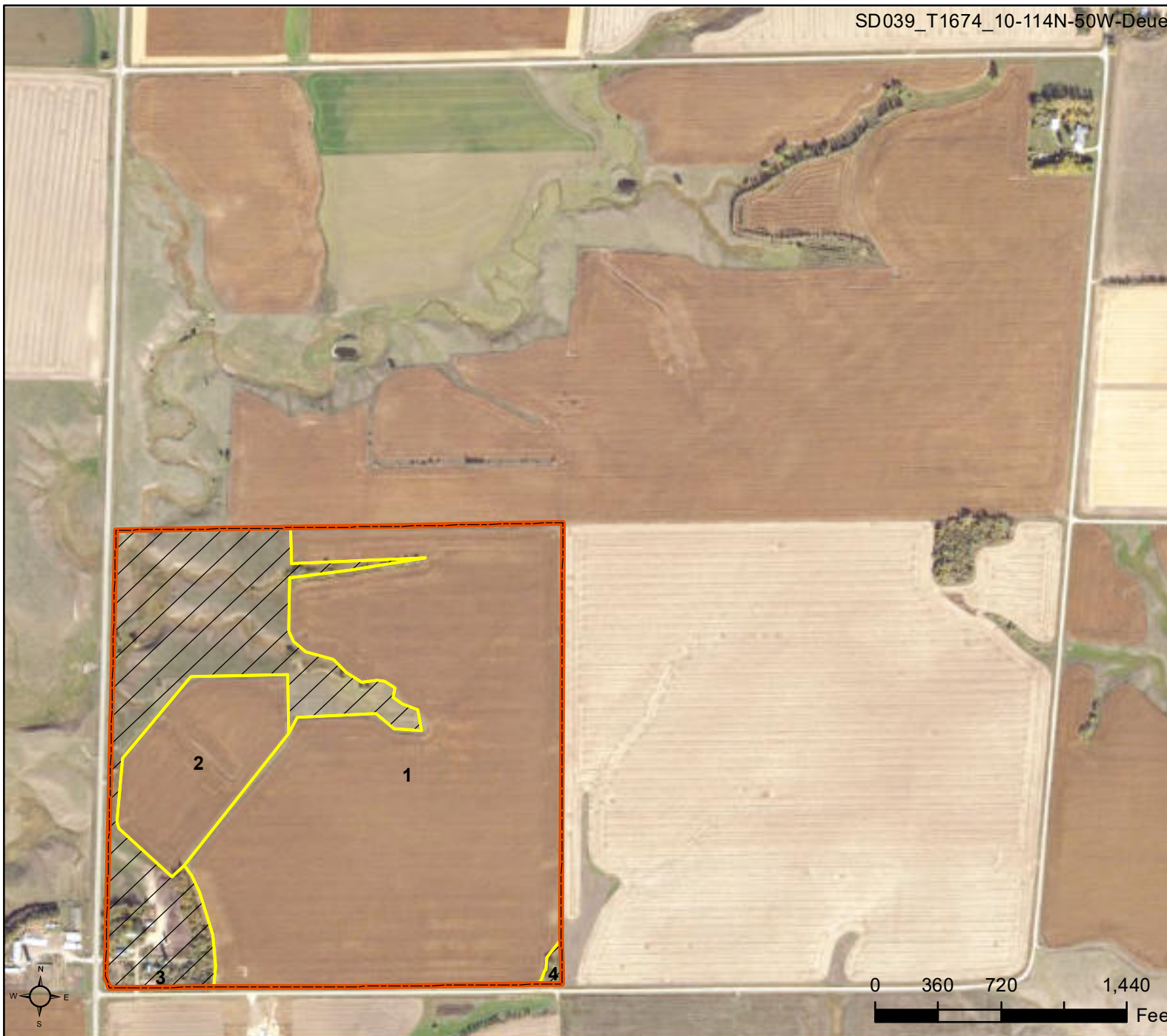


SD039\_T1674\_10-114N-50W-Deuel



CLU	Acres	HEL	Crop
1	101.63	NHEL	
2	16.26	NHEL	
3	38.04	UHEL	NC
4	0.45	UHEL	NC

Page Cropland Total: 117.89 acres

Map Created April 26, 2024

**Common Land Unit**

- Cropland
- Non-Cropland
- Tract Boundary
- PLSS

Unless otherwise noted, crops listed below are:  
 Non-irrigated  
 Intended for Grain  
 Corn = Yellow  
 Soybeans = Common  
 Wheat - HRS or HRW  
 Sunflowers = Oil or Non  
 Producer Initial \_\_\_\_\_  
 Date \_\_\_\_\_

**Wetland Determination Identifiers**

- Restricted Use
- Limited Restrictions
- Exempt from Conservation
- Compliance Provisions

USDA FSA maps are for FSA Program administration only. This map does not represent a legal survey or reflect actual ownership; rather it depicts the information provided directly from the producer and/or the NAIP imagery. The producer accepts the data 'as is' and assumes all risks associated with its use. The USDA Farm Service Agency assumes no responsibility for actual or consequential damage incurred as a result of any user's reliance on this data outside FSA Programs. Wetland identifiers do not represent the size, shape, or specific determination of the area. Refer to your original determination (CPA-026 and attached maps) for exact boundaries and determinations or contact NRCS.

SD039\_T1688\_16-114N-50W-Deuel







CLU	Acres	HEL	Crop
1	65.39	NHEL	
2	6.11	NHEL	
3	6.36	UHEL	NC
4	1.97	UHEL	NC

Page Cropland Total: 71.5 acres




Map Created April 26, 2024

**Common Land Unit**

-  Cropland
-  Non-Cropland
-  Tract Boundary
-  PLSS

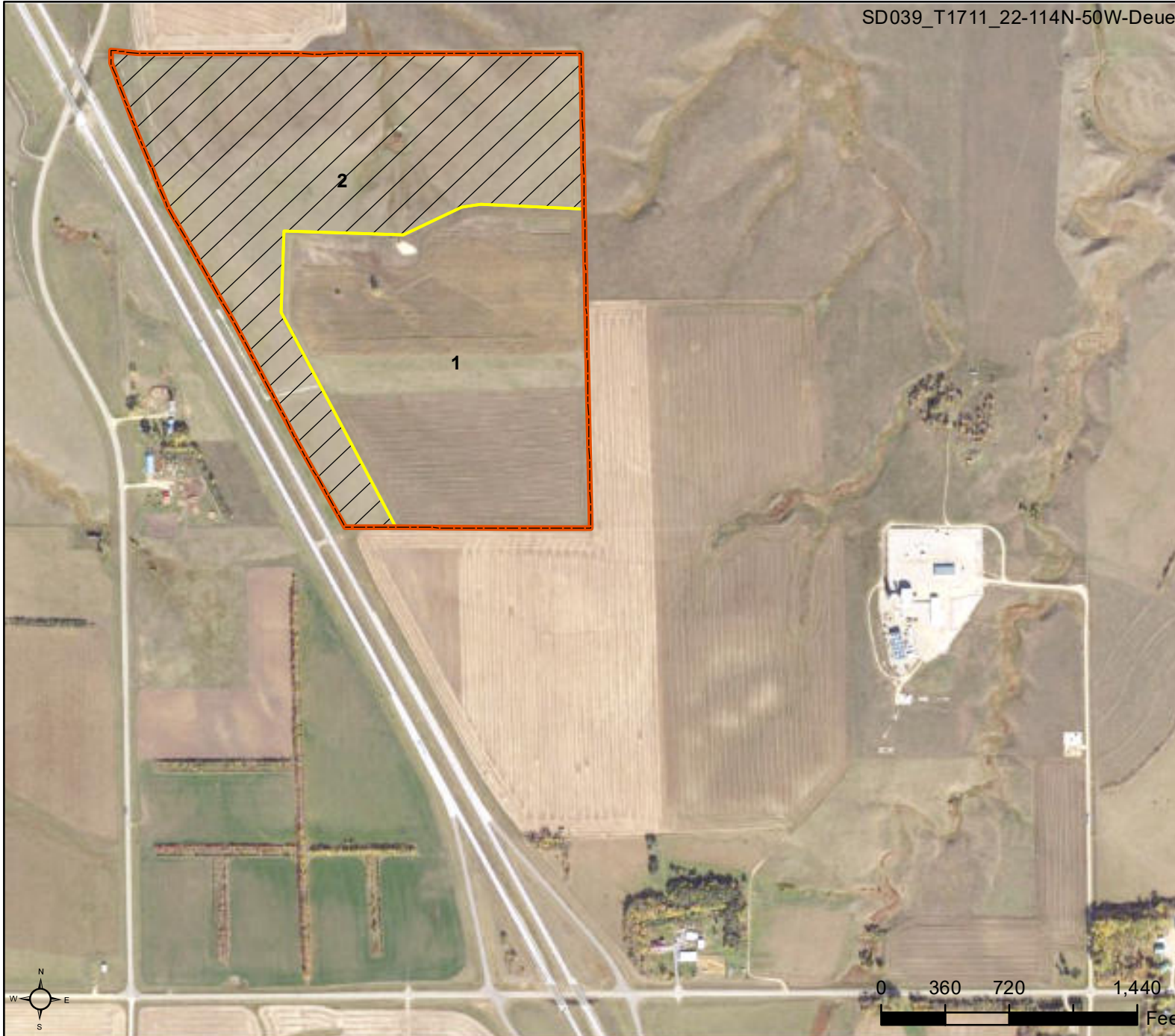
Unless otherwise noted,  
 crops listed below are:  
 Non-irrigated  
 Intended for Grain  
 Corn = Yellow  
 Soybeans = Common  
 Wheat - HRS or HRW  
 Sunflowers = Oil or Non  
 Producer Initial \_\_\_\_\_  
 Date \_\_\_\_\_

**Wetland Determination Identifiers**

-  Restricted Use
-  Limited Restrictions
-  Exempt from Conservation Compliance Provisions



SD039\_T1711\_22-114N-50W-Deuel



CLU	Acres	HEL	Crop
1	59.77	NHEL	
2	67.44	UHEL	NC

Page Cropland Total: 59.77 acres

Map Created April 26, 2024

- Common Land Unit**
- Cropland
  - Non-Cropland
  - Tract Boundary
- PLSS

Unless otherwise noted,  
crops listed below are:  
Non-irrigated  
Intended for Grain  
Corn = Yellow  
Soybeans = Common  
Wheat - HRS or HRW  
Sunflowers = Oil or Non  
Producer Initial \_\_\_\_\_  
Date \_\_\_\_\_

- Wetland Determination**
- Restricted Use
  - Limited Restrictions
  - Exempt from Conservation
  - Compliance Provisions





**Abbreviated 156 Farm Record**

**Operator Name**

**CRP Contract Number(s)** : None  
**Recon ID** : None  
**Transferred From** : None  
**ARCPLC G//F Eligibility** : Eligible

**Farm Land Data**

Farmland	Cropland	DCP Cropland	WBP	EWP	WRP	GRP	Sugarcane	Farm Status	Number Of Tracts
363.42	249.16	249.16	0.00	0.00	0.00	0.00	0.0	Active	3
State Conservation	Other Conservation	Effective DCP Cropland	Double Cropped		CRP	MPL	DCP Ag.Rel. Activity	SOD	
0.00	0.00	249.16	0.00		0.00	0.00	0.00	0.00	

**Crop Election Choice**

ARC Individual	ARC County	Price Loss Coverage
None	OATS, CORN, SOYBN	None

**DCP Crop Data**

Crop Name	Base Acres	CCC-505 CRP Reduction Acres	PLC Yield	HIP
Oats	16.90	0.00	70	
Corn	97.67	0.00	107	0
Soybeans	99.33	0.00	29	0
<b>TOTAL</b>	<b>213.90</b>	<b>0.00</b>		

**NOTES**

**Tract Number** : 1674

**Description** : SW 10 114 50  
**FSA Physical Location** : SOUTH DAKOTA/DEUEL  
**ANSI Physical Location** : SOUTH DAKOTA/DEUEL  
**BIA Unit Range Number** :  
**HEL Status** : NHEL: No agricultural commodity planted on undetermined fields  
**Wetland Status** : Tract contains a wetland or farmed wetland  
**WL Violations** : None  
**Owners**  
**Other Producers**  
**Recon ID** : None

**Tract Land Data**

Farm Land	Cropland	DCP Cropland	WBP	EWP	WRP	GRP	Sugarcane
156.38	117.89	117.89	0.00	0.00	0.00	0.00	0.0

**Abbreviated 156 Farm Record**

**Tract 1674 Continued ...**

State Conservation	Other Conservation	Effective DCP Cropland	Double Cropped	CRP	MPL	DCP Ag. Rel Activity	SOD
0.00	0.00	117.89	0.00	0.00	0.00	0.00	0.00

**DCP Crop Data**

Crop Name	Base Acres	CCC-505 CRP Reduction Acres	PLC Yield
Oats	7.98	0.00	70
Corn	46.15	0.00	107
Soybeans	46.93	0.00	29
<b>TOTAL</b>	<b>101.06</b>	<b>0.00</b>	

**NOTES**

--

**Tract Number** : 1688

**Description** : ENE 16 114 50  
**FSA Physical Location** : SOUTH DAKOTA/DEUEL  
**ANSI Physical Location** : SOUTH DAKOTA/DEUEL  
**BIA Unit Range Number** :  
**HEL Status** : NHEL: No agricultural commodity planted on undetermined fields  
**Wetland Status** : Tract contains a wetland or farmed wetland  
**WL Violations** : None  
**Owners**  
**Other Producers**  
**Recon ID** : None

**Tract Land Data**

Farm Land	Cropland	DCP Cropland	WBP	EWP	WRP	GRP	Sugarcane
79.83	71.50	71.50	0.00	0.00	0.00	0.00	0.0
State Conservation	Other Conservation	Effective DCP Cropland	Double Cropped	CRP	MPL	DCP Ag. Rel Activity	SOD
0.00	0.00	71.50	0.00	0.00	0.00	0.00	0.00

**DCP Crop Data**

Crop Name	Base Acres	CCC-505 CRP Reduction Acres	PLC Yield
Oats	4.86	0.00	70
Corn	28.06	0.00	107
Soybeans	28.54	0.00	29
<b>TOTAL</b>	<b>61.46</b>	<b>0.00</b>	

**NOTES**

--

**Abbreviated 156 Farm Record**

**Tract Number** : 1711  
**Description** : ALL LAND E OF INTERSTATE NW 22 114 50  
**FSA Physical Location** : SOUTH DAKOTA/DEUEL  
**ANSI Physical Location** : SOUTH DAKOTA/DEUEL  
**BIA Unit Range Number** :  
**HEL Status** : NHEL: No agricultural commodity planted on undetermined  
**Wetland Status** : fields : Tract contains a wetland or farmed wetland  
**WL Violations** : None  
**Owners**  
**Other Producers** : None  
**Recon ID** : None

**Tract Land Data**

Farm Land	Cropland	DCP Cropland	WBP	EWP	WRP	GRP	Sugarcane
127.21	59.77	59.77	0.00	0.00	0.00	0.00	0.0
State Conservation	Other Conservation	Effective DCP Cropland	Double Cropped	CRP	MPL	DCP Ag. Rel Activity	SOD
0.00	0.00	59.77	0.00	0.00	0.00	0.00	0.00

**DCP Crop Data**

Crop Name	Base Acres	CCC-505 CRP Reduction Acres	PLC Yield
Oats	4.06	0.00	70
Corn	23.46	0.00	107
Soybeans	23.86	0.00	29
<b>TOTAL</b>	<b>51.38</b>	<b>0.00</b>	

**NOTES**

*In accordance with Federal civil rights law and U.S. Department of Agriculture (USDA) civil rights regulations and policies, the USDA, its Agencies, offices, and employees, and institutions participating in or administering USDA programs are prohibited from discriminating based on race, color, national origin, religion, sex, gender identity (including gender expression), sexual orientation, disability, age, marital status, family/parental status, income derived from a public assistance program, political beliefs, or reprisal or retaliation for prior civil rights activity, in any program or activity conducted or funded by USDA (not all bases apply to all programs). Remedies and complaint filing deadlines vary by program or incident.*

*Persons with disabilities who require alternative means of communication for program information (e.g., Braille, large print, audiotape, American Sign Language, etc.) should contact the responsible Agency or USDA's TARGET Center at (202) 720-2600 (voice and TTY) or contact USDA through the Federal Relay Service at (800) 877-8339. Additionally, program information may be made available in languages other than English.*

*To file a program discrimination complaint, complete the USDA Program Discrimination Complaint Form, AD-3027, found online at [http://www.ascr.usda.gov/complaint\\_filing\\_cust.html](http://www.ascr.usda.gov/complaint_filing_cust.html) and at any USDA office or write a letter addressed to USDA and provide in the letter all of the information requested in the form. To request a copy of the complaint form, call (866) 632-9992. Submit your completed form or letter to USDA by: (1) mail: U.S. Department of Agriculture Office of the Assistant Secretary for Civil Rights 1400 Independence Avenue, SW Washington, D.C. 20250-9410; (2) fax: (202) 690-7442; or (3) e-mail: [program.intake@usda.gov](mailto:program.intake@usda.gov). USDA is an equal opportunity provider, employer, and lender.*