

Farmland Auction

25
YEARS
est. 2000

104 Acres • Stark County, ND

Tuesday, October 14, 2025 – 3:00 p.m.

Baymont Inn: 2611 Old Red Trail NW • Mandan, ND

OWNER: Berger - Miller LLC



Pifer's

701.475.7653

www.pifers.com

INTRODUCTION

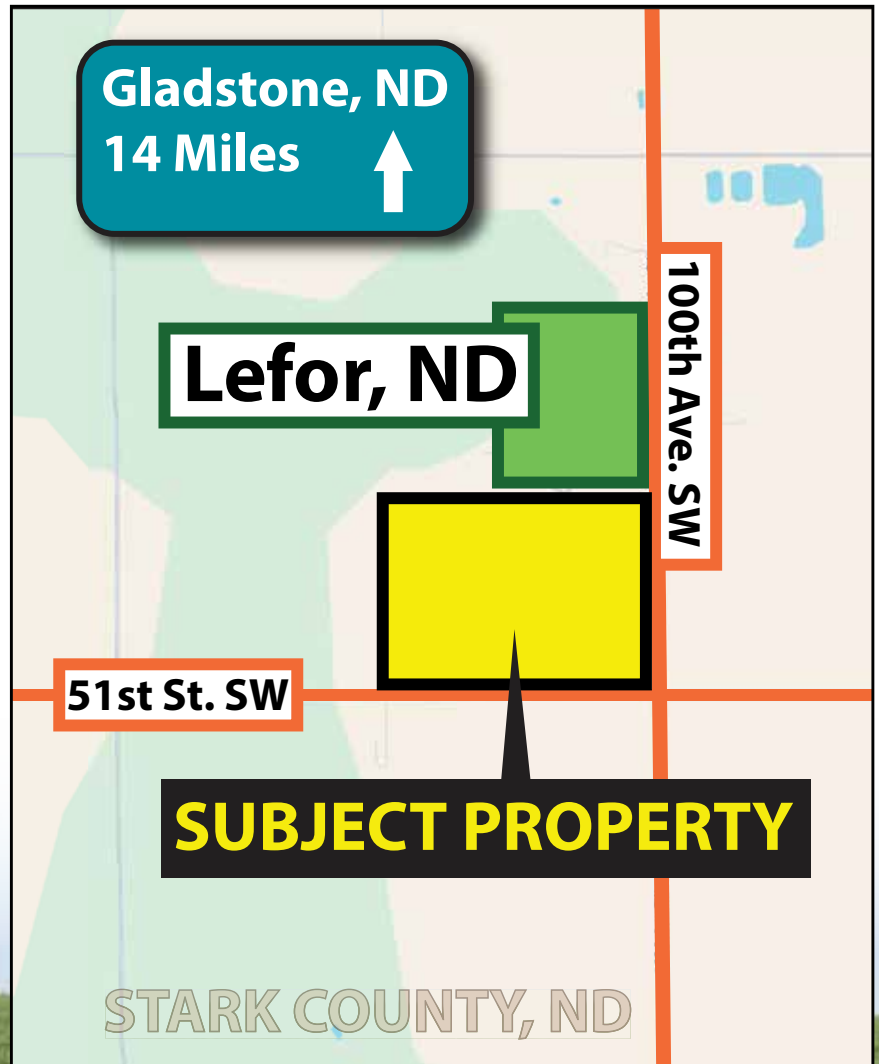
Auction Note: Pifer's Auction & Realty and Alan Butts have had a long relationship with Fred Berger over many years, and we are appreciative of the relationship and of the many transactions that we have done together. Pifer's and I are saddened by the loss of Fred and offer our condolences to Arlene Berger and the Berger family.

Pifer's and I are honored to continue working with the Berger family to market 104 +/- acres of cropland directly to the south of the town of Lefor, ND, a strong agricultural farming and ranching area of North Dakota. This auction features quality cropland featuring mainly Class IIe and IIIe with a Soil Productivity Index (SPI) average of 61.7. This property is free of any Wetland or US Fish & Wildlife Easements. This is one of three different properties that Fred Berger Estate and family are selling. The property at Mandan, consists of two parcels, one of 5.02 +/- acres, and 35.43 +/- acres with 26 +/- irrigated crop acres, and 200 +/- acres of pasture in Sheridan County, ND.

Driving Directions

From the intersection of I-94 and Gladstone, ND, Exit #72, travel south on 100th Ave. SW for 13.75 miles to the northeast corner of the land.

From the intersection of Hwy. #22 and 50th St. SW, travel east 11 miles to 100th Ave. SW, then 1.75 miles south to the northeast corner of the land.



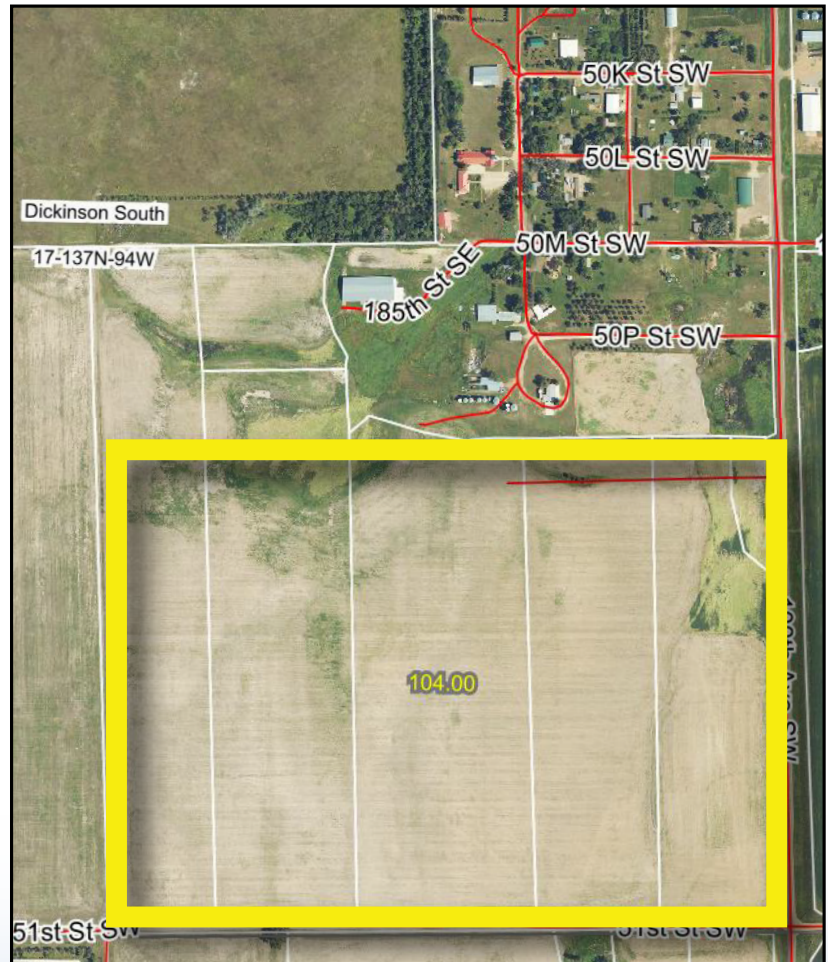
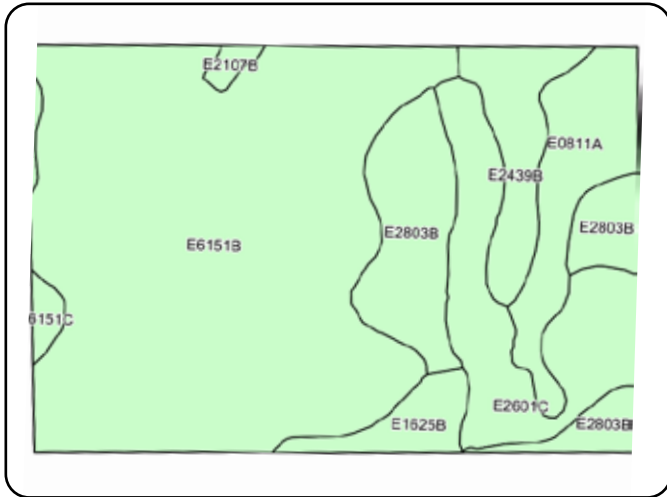
Alan Butts • 701.400.8858 or alanb@pifers.com

Pifer's

510 7th St. NW • Steele, ND 58482

PROPERTY INFORMATION

Acres: 104 +/-
Legal: Parcel 2 in South Portion SE¼ 17-137-94
FSA Crop Acres: 101.93 +/-
Taxes (2024): \$564.29



Crop	Base Acres	Yield
Wheat	67.76	34 bu.
Beans-Large Chickpeas	3.2	1,091 lbs.
Total Base Acres: 70.96		

Code	Soil Description	Acres	Percent of field	Non-Irr Class *c	Productivity Index
E6151B	Lefor fine sandy loam, 3 to 6 percent slopes	57.60	56.8%	IIIe	57
E2601C	Amor-Cabba loams, 6 to 9 percent slopes	12.75	12.5%	IIIe	53
E2803B	Amor-Shambo loams, 3 to 6 percent slopes	12.51	12.3%	Ile	76
E0811A	Grail silty clay loam, 0 to 2 percent slopes	8.18	8.0%	IIc	96
E2439B	Sen-Janesburg silt loams, 3 to 6 percent slopes	5.74	5.6%	Ile	48
E1625B	Vebar-Parshall fine sandy loams, 3 to 6 percent slopes	3.07	3.0%	IIIe	63
E6151C	Lefor fine sandy loam, 6 to 9 percent slopes	1.25	1.2%	IVe	42
E2107B	Arnegard loam, 2 to 6 percent slopes	0.61	0.6%	Ile	93
Weighted Average					61.7

TERMS & CONDITIONS

I. Terms and Conditions of Auction

All bidding is open to the public without regard to a prospective bidder's sex, race, color, religion, or national origin.

A. If you intend to bid on this property, you will be required to provide a cashier's check or personal check in the amount of 10 percent of the purchase price as earnest money on the date of the auction. If you are the successful bidder you will be required to complete and sign a standard Real Estate Purchase Agreement.

B. If you are the highest bidder on any of this property, you will be required to deposit a check with the closing agent who will hold the money in escrow until the closing date. All documentation will be available for your review prior to commencement of the auction. All real estate sales must be closed and the total balance of the purchase price paid on or before 12/22/25. After the auction sale you will be given an appointment date and time with the Closing Agent for a closing date to close the transaction.

II. Bidding Procedures

All bidding is open to the public. You need only to raise your hand and shout out your bid, or instruct any of the ring men to do so on your behalf. Anyone who wishes to bid must first register to obtain a bidder's card at the registration desk.

Retain your bidder number for the duration of the auction. You are responsible for your assigned number. The property is sold when the Auctioneer announces, "sold," identifies the winning bid number and the amount of the bid and the information is recorded by the Auctioneer or his designee. In case of a tie bid, bidding will be reopened between the two tied bidders. The high bid cannot be withdrawn once the Auctioneer determines it to be the winning sale bid.

III. Purchase Agreement, Marketability, Signing Area

At the time the auction is complete, the successful high bidder must sign a standard Real Estate Purchase Agreement to purchase this property for which it was the high bidder. An appointment date to close the transaction will be furnished to the Purchaser after the Purchase Agreement is signed. The transaction must be closed and the money paid on or before December 22, 2025, or the Purchaser will be in default and the earnest money paid herein will be forfeited to the Seller. The Pifer Group Inc, dba Pifer's Auction & Realty and the Seller assumes that the bidders have inspected the property and are satisfied with the conditions of such property and accept that property in an "as is," "where is" condition. The buyer agrees to hold The Pifer Group, Inc. and its client harmless regarding any representation as to the status, zoning, condition and any other material representation regarding this property.

III. Purchase Agreement, Marketability, Signing Area (cont'd)

It is the Purchaser's responsibility to make needed repairs or improvements, if any to bring the property up to necessary state, local, and federal codes. The Pifer Group, Inc. and the sellers obtained information from sources deemed reliable, but do not guarantee its accuracy. Due diligence of property and related information by buyer is strongly recommended.

IV. Forfeiture of Purchase Money Paid Pursuant to the Terms of the Purchase Agreement

Purchaser's failure to close the sale by the closing date due to insufficient funds, or for any other reason will result in the forfeiture of Purchaser's earnest money deposit.

V. Closing

At closing, Buyer will be required to pay the difference between the purchase money deposit and the final selling price. Any fees and closing cost regarding determination of title will be paid by the Purchaser.

VI. Showing of Property

Showing of property will be held by appointment only. WHETHER OR NOT YOU ACTUALLY INSPECT THE PROPERTY, YOU WILL BE BOUND TO ACCEPT THE PROPERTY "AS IS" AND WITH ALL FAULTS AND DEFECTS AND WITH NO EXPRESSED OR IMPLIED WARRANTY AS TO MARKETABILITY OR THE CONDITION THEREOF. It will be your responsibility to make any needed repairs, improvements or compliance requirements to bring the property to applicable codes.

VII. Miscellaneous

Conduct of the auction and increments of bidding will be at the discretion of the Auctioneer. The determination by the Auctioneer as to all matters, including the high bidder and the amount of the high bid will be conclusive.

Announcements made by the Auctioneer, Kevin D. Pifer of Pifer's Auction & Realty, will take precedence over said printed matter. For complete prospectus and earnest money requirements contact Pifer's.

This auction bidder's information (including these terms and conditions and any picture or description of any property) is for your information and convenience only. Nothing contained in this information shall be binding on the Seller of the property or the Auctioneer, Pifer's Auction & Realty.

We encourage you to inspect any property you wish to bid on. The seller reserves the right to reject any and all bids.

This sale is managed by Pifer's Auction & Realty, Kevin Pifer, ND #715.

701.475.7653



www.pifers.com